

CONTRACT NO. 87352



FROM POC (SW COR, LOT 11 ETNA PLAZA SUB.) TO POB'S

PARCEL	POINT TO POINT	BEARING	DISTANCE
POB 6	65 TO 57	S.88°53'31"W.	1411.04'
	57 TO 20	S.88°49'30"W.	639.40'
POB 6 TE	65 TO 57	S.88°53'31"W.	1411.04'
	57 TO 22	S.88°49'30"W.	464.27'
POB 9 TE-1	65 TO 57	S.88°53'31"W.	1411.04'
	57 TO 28	S.88°49'30"W.	404.24'
POB 7 TE	65 TO 57	S.88°53'31"W.	1411.04'
	57 TO 33	S.88°49'30"W.	214.24'

PARCEL	POINT TO POINT	BEARING	DISTANCE
9 TE-1	28 TO 22	S.88°49'30"W.	60.03'
	22 TO 27	N.0°34'20"E.	8.31'
9 TE-1	27 TO 44	N.88°59'10"E.	10.03'
	44 TO 45	N.1°00'50"W.	10.00'
	45 TO 46	N.88°59'10"E.	40.00'
	46 TO 47	S.1°00'50"E.	10.00'
	47 TO 29	N.88°59'10"E.	9.99'
	29 TO 28	S.0°34'20"W.	8.14'

FOR AREA TABLE OF PARCEL 9 SEE SHEET 3

PARCEL 6
CENTRUE BANK

TOTAL HOLDING = 1.062 Ac.±
 TOTAL R.O.W. REQUIRED = 0.005 Ac.±
 REMAINDER = 1.057 Ac.±
 TEMPORARY EASEMENT = 0.046 Ac.±
 PURPOSE: DRIVE CONSTRUCTION, GRADING & SHAPING

PARCEL	POINT TO POINT	BEARING	DISTANCE
6	20 TO 19	S.51°22'52"W.	32.07'
	19 TO 18	N.0°34'20"E.	11.78'
	18 TO 21	N.52°11'26"E.	12.94'
	21 TO 20	N.88°49'30"W.	14.72'
6-T.E.	22 TO 20	S.88°49'30"W.	175.13'
	20 TO 23	N.84°25'48"E.	110.74'
	23 TO 24	N.1°00'50"W.	20.00'
	24 TO 25	N.88°59'10"E.	50.00'
	25 TO 26	S.1°00'50"E.	20.00'
	26 TO 27	N.88°59'10"E.	14.97'
	27 TO 22	S.0°34'20"W.	8.31'

PARCEL 5
ALBS WIRELESS SERVICES II, LLC

TOTAL HOLDING = 0.897 Ac.±
 TOTAL R.O.W. REQUIRED = 0.022 Ac.±
 REMAINDER = 0.875 Ac.±

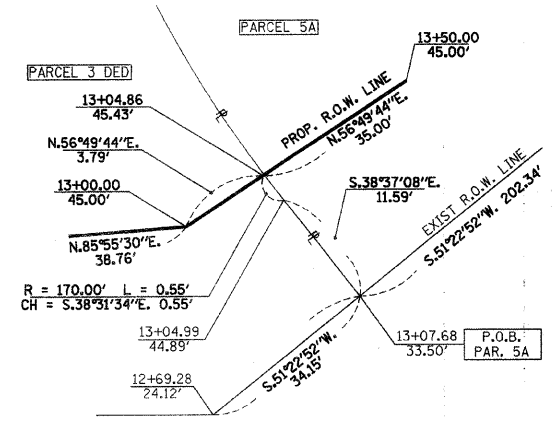
PARCEL	POINT TO POINT	BEARING	DISTANCE
5	16 TO 17	N.0°32'42"E.	13.52'
	17 TO 18	N.52°11'26"E.	95.66'
	18 TO 19	S.0°34'20"W.	11.78'
	19 TO 16	S.51°22'52"W.	96.75'

PARCEL 4
NORTHERN STAR TRUST CO., TRUSTEE TR. NO. 06-10149

TOTAL HOLDING = 4.974 Ac.±
 TOTAL R.O.W. REQUIRED = 0.021 Ac.±
 REMAINDER = 4.953 Ac.±

PARCEL	POINT TO POINT	BEARING	DISTANCE
4	13 TO 12	N.89°29'19"W.	12.87'
	12 TO 15	N.49°48'55"E.	92.56'
	15 TO 17	N.52°11'26"E.	11.90'
	17 TO 16	S.0°32'42"W.	13.52'
	16 TO 13	S.51°22'52"W.	85.90'

DETAIL A
NOT TO SCALE



PARCEL 3 DED
ETNA OIL CO., INC.

TOTAL HOLDING = 0.907 Ac.±
 TOTAL R.O.W. REQUIRED = 0.171 Ac.±
 TEMPORARY EASEMENT = 0.022 Ac.±
 PURPOSE: GRADING & SHAPING

PARCEL	POINT TO POINT	BEARING	DISTANCE
3-T.E.	5 TO 6	S.68°25'01"E.	51.59'
	6 TO 7	N.88°46'21"E.	150.00'
	7 TO 8	S.87°35'06"E.	39.80'
	8 TO 9	S.85°12'41"W.	39.79'
	9 TO 10	S.88°46'21"W.	150.00'
	10 TO 5	N.63°29'44"W.	53.72'

PARCEL 7
OTTAWA LODGING, INC.

TOTAL HOLDING = 1.020 Ac.±
 TEMPORARY EASEMENT = 0.055 Ac.±
 PURPOSE: DRIVE CONSTRUCTION, GRADING & SHAPING

PARCEL	POINT TO POINT	BEARING	DISTANCE
7-TE	33 TO 28	S.88°49'30"W.	190.00'
	28 TO 29	N.0°34'20"E.	8.14'
	29 TO 30	N.88°59'10"E.	155.01'
	30 TO 31	N.1°00'50"W.	25.00'
	31 TO 32	N.88°59'10"E.	35.67'
	32 TO 33	S.0°34'20"W.	32.61'

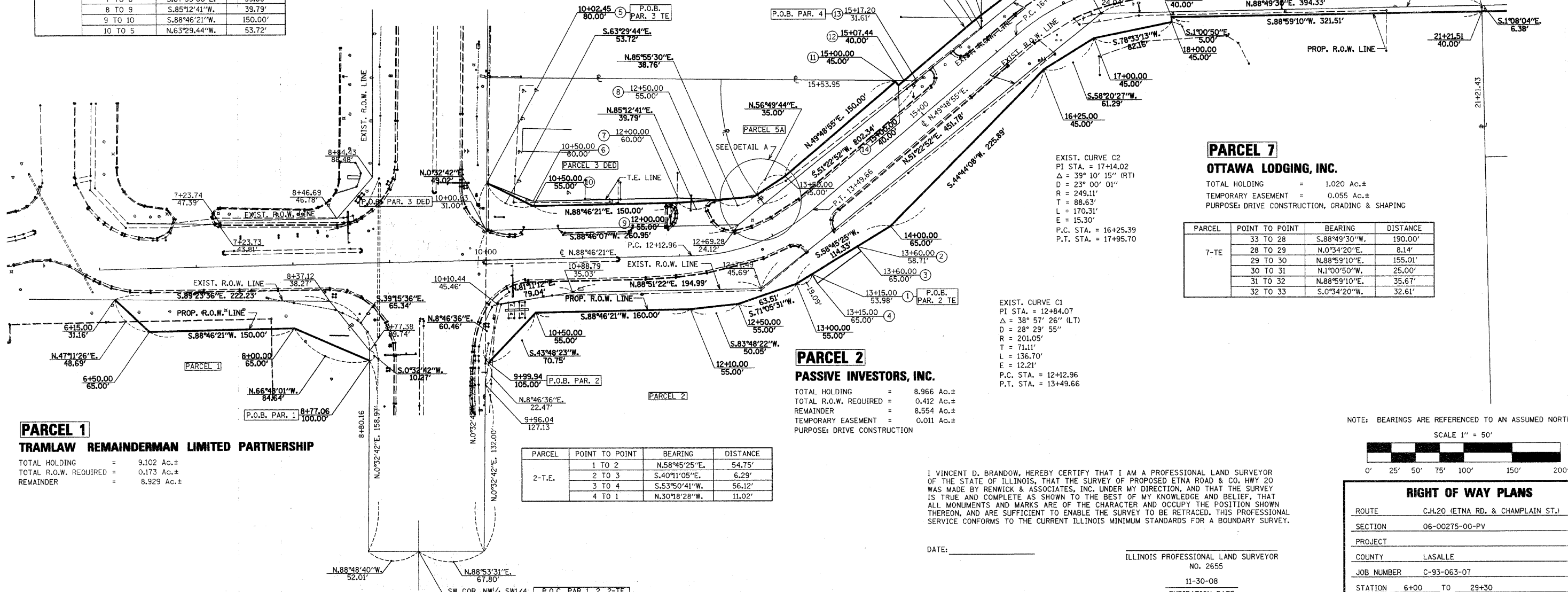
PARCEL 2
PASSIVE INVESTORS, INC.

TOTAL HOLDING = 8.966 Ac.±
 TOTAL R.O.W. REQUIRED = 0.412 Ac.±
 REMAINDER = 8.554 Ac.±
 TEMPORARY EASEMENT = 0.011 Ac.±
 PURPOSE: DRIVE CONSTRUCTION

PARCEL	POINT TO POINT	BEARING	DISTANCE
2-T.E.	1 TO 2	N.58°45'25"E.	54.75'
	2 TO 3	S.40°11'05"E.	6.29'
	3 TO 4	S.53°50'41"W.	56.12'
	4 TO 1	N.30°18'28"W.	11.02'

PARCEL 1
TRAMLAW REMAINDERMAN LIMITED PARTNERSHIP

TOTAL HOLDING = 9.102 Ac.±
 TOTAL R.O.W. REQUIRED = 0.173 Ac.±
 REMAINDER = 8.929 Ac.±

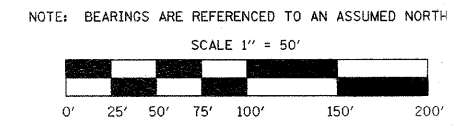


EXIST. CURVE C2
 PI STA. = 17+4.02
 $\Delta = 39^\circ 10' 15''$ (RT)
 $D = 23^\circ 00' 01''$
 $R = 249.11'$
 $T = 88.63'$
 $L = 170.31'$
 $E = 15.30'$
 P.C. STA. = 16+25.39
 P.T. STA. = 17+95.70

EXIST. CURVE C1
 PI STA. = 12+84.07
 $\Delta = 38^\circ 57' 26''$ (LT)
 $D = 28^\circ 29' 55''$
 $R = 201.05'$
 $T = 71.11'$
 $L = 136.70'$
 $E = 12.21'$
 P.C. STA. = 12+12.96
 P.T. STA. = 13+49.66

I VINCENT D. BRANDOW, HEREBY CERTIFY THAT I AM A PROFESSIONAL LAND SURVEYOR OF THE STATE OF ILLINOIS, THAT THE SURVEY OF PROPOSED ETNA ROAD & CO. HWY 20 WAS MADE BY RENWICK & ASSOCIATES, INC. UNDER MY DIRECTION, AND THAT THE SURVEY IS TRUE AND COMPLETE AS SHOWN TO THE BEST OF MY KNOWLEDGE AND BELIEF, THAT ALL MONUMENTS AND MARKS ARE OF THE CHARACTER AND OCCUPY THE POSITION SHOWN THEREON, AND ARE SUFFICIENT TO ENABLE THE SURVEY TO BE RETRACED. THIS PROFESSIONAL SERVICE CONFORMS TO THE CURRENT ILLINOIS MINIMUM STANDARDS FOR A BOUNDARY SURVEY.

DATE: _____
 ILLINOIS PROFESSIONAL LAND SURVEYOR
 NO. 2655
 11-30-08
 EXPIRATION DATE



RIGHT OF WAY PLANS

ROUTE	C.H.20 (ETNA RD. & CHAMPLAIN ST.)
SECTION	06-00275-00-PV
PROJECT	
COUNTY	LASALLE
JOB NUMBER	C-93-063-07
STATION	6+00 TO 29+30
SHEET	2 OF 8 SCALE 1" = 50'