

CONTRACT NO. 87352

PARCEL 8

SHREE HOSPITALITY CORP.

TOTAL HOLDING = 1.020 Ac.±
 TEMPORARY EASEMENT = 0.053 Ac.±
 PURPOSE: DRIVE CONSTRUCTION, GRADING & SHAPING

PARCEL	POINT TO POINT	BEARING	DISTANCE
8-TE	43 TO 34	S.88°49'30"W.	190.00'
	34 TO 35	N.0°34'20"E.	32.62'
	35 TO 36	N.88°59'10"E.	4.33'
	36 TO 37	S.1°00'50"E.	25.00'
	37 TO 38	N.88°59'10"E.	20.00'
	38 TO 39	N.1°00'50"W.	20.00'
	39 TO 40	N.88°59'10"E.	40.00'
	40 TO 41	S.1°00'50"E.	20.00'
	41 TO 42	N.88°59'10"E.	124.96'
	42 TO 43	S.0°34'20"W.	7.07'

PARCEL 9

LORAIN HESS

TOTAL HOLDING = 28.044 Ac.±
 TOTAL R.O.W. REQUIRED = 0.161 Ac.±
 REMAINDER = 27.883 Ac.±
 TEMPORARY EASEMENT = 0.155 Ac.±
 TE 1 = 0.021 Ac.±
 TE 2 = 0.134 Ac.±
 PURPOSE: DRIVE CONSTRUCTION, GRADING & SHAPING

PARCEL 17

ROOP K. DAVE, et ux.

TOTAL HOLDING = 0.100 Ac.±
 TOTAL R.O.W. REQUIRED = 0.007 Ac.±
 REMAINDER = 0.093 Ac.±
 TEMPORARY EASEMENT = 0.010 Ac.±
 PURPOSE: GRADING

PARCEL	POINT TO POINT	BEARING	DISTANCE
17	81 TO 79	S.88°54'41"W.	42.26'
	79 TO 78	N.0°30'27"W.	7.10'
	78 TO 80	N.88°53'31"E.	42.40'
	80 TO 81	S.0°38'31"W.	7.11'
17 TE	81 TO 275	S.0°38'31"W.	10.00'
	275 TO 274	S.88°54'41"W.	42.06'
	274 TO 79	N.0°30'27"W.	10.00'
	79 TO 81	N.88°54'41"E.	42.26'

FROM POC (SW COR. LOT 11 ETNA PLAZA SUB.) TO POB'S

PARCEL	POINT TO POINT	BEARING	DISTANCE
8 TE	65 TO 57	S.88°53'31"W.	1411.04'
	57 TO 43	S.88°49'30"W.	24.24'
9 TE-2		S.88°53'31"W.	705.09'

PARCEL 18

MARTIN YOESLE, et al.

TOTAL HOLDING = 0.227 Ac.±
 TOTAL R.O.W. REQUIRED = 0.015 Ac.±
 REMAINDER = 0.212 Ac.±
 TEMPORARY EASEMENT = 0.022 Ac.±
 PURPOSE: GRADING

PARCEL	POINT TO POINT	BEARING	DISTANCE
18	81 TO 80	N.0°38'31"E.	7.11'
	80 TO 82	N.88°53'31"E.	93.98'
	82 TO 83	S.0°38'17"W.	7.15'
	83 TO 81	S.88°54'41"W.	93.98'
18 TE	81 TO 83	N.88°54'41"E.	93.98'
	83 TO 275	S.0°38'17"W.	10.00'
	275 TO 274	S.88°54'41"W.	93.98'
	274 TO 81	N.0°38'31"E.	10.00'

PARCEL 19

WILLIAM H. FRANKLIN, JR., et al.

TOTAL HOLDING = 1.419 Ac.±
 TEMPORARY EASEMENT = 0.074 Ac.±
 PURPOSE: DRIVE CONSTRUCTION, GRADING & SHAPING

PARCEL	POINT TO POINT	BEARING	DISTANCE
19-TE	277 TO 278	N.0°39'28"E.	10.23'
	278 TO 85	N.88°53'31"E.	192.09'
	85 TO 86	N.88°53'31"E.	127.91'
	86 TO 87	S.0°39'28"W.	5.34'
	87 TO 88	S.88°54'41"W.	88.05'
	88 TO 89	S.72°12'43"W.	52.20''
	89 TO 84	N.79°46'43"W.	50.99'
	84 TO 277	S.88°54'41"W.	132.10'

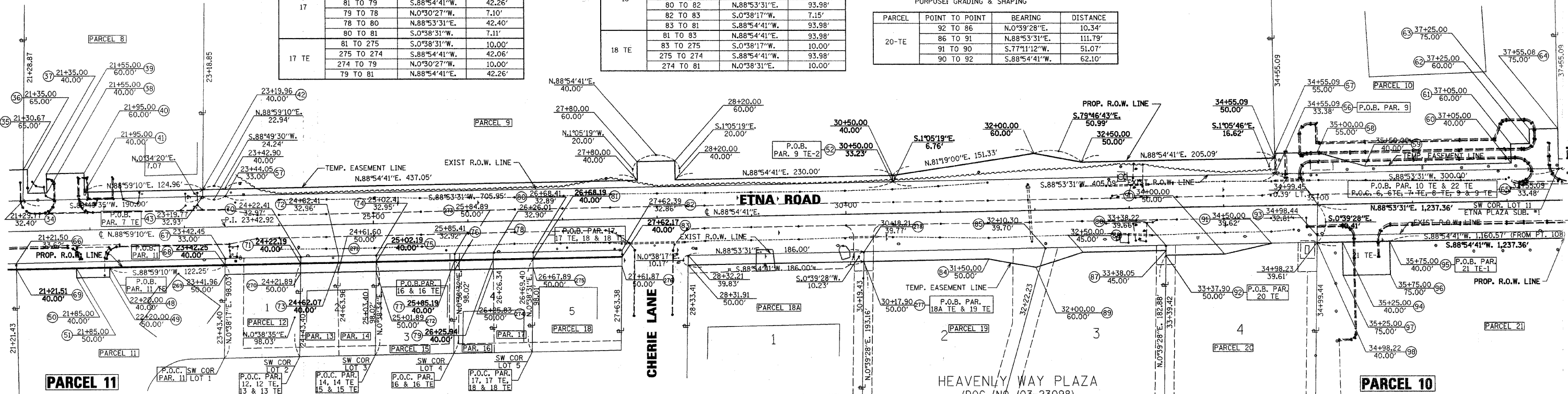
PARCEL 20

JOSEPH R. NAVARRO

TOTAL HOLDING = 0.710 Ac.±
 TEMPORARY EASEMENT = 0.021 Ac.±
 PURPOSE: GRADING & SHAPING

PARCEL	POINT TO POINT	BEARING	DISTANCE
20-TE	92 TO 86	N.0°39'28"E.	10.34'
	86 TO 91	N.88°53'31"E.	111.79'
	91 TO 90	S.77°11'12"W.	51.07'
	90 TO 92	S.88°54'41"W.	62.10'

PARCEL	POINT TO POINT	BEARING	DISTANCE
10-TE	65 TO 56	S.88°53'31"W.	300.00'
	56 TO 57	N.1°05'46"W.	21.62'
	57 TO 58	N.88°54'41"E.	44.91'
	58 TO 59	S.74°23'22"E.	52.20'
	59 TO 60	N.88°54'41"E.	155.00'
	60 TO 61	N.1°05'19"W.	20.00'
	61 TO 62	N.88°54'41"E.	20.00'
	62 TO 63	N.1°05'19"W.	15.00'
	63 TO 64	N.88°54'41"E.	30.08'
	64 TO 65	S.1°05'46"E.	41.52'



PARCEL 11

1ST NATIONAL BANK OF OTTAWA, TRUSTEE TR. NO. 102036-0000

TOTAL HOLDING = 0.696 Ac.±
 TOTAL R.O.W. REQUIRED = 0.034 Ac.±
 REMAINDER = 0.662 Ac.±
 TEMPORARY EASEMENT = 0.008 Ac.±
 PURPOSE: DRIVE CONSTRUCTION

PARCEL	POINT TO POINT	BEARING	DISTANCE
11	68 TO 69	S.89°59'10"W.	220.74'
	69 TO 66	N.1°08'04"W.	6.38'
	66 TO 67	N.88°49'30"E.	220.95'
	67 TO 68	S.0°38'17"W.	7.00'
	48 TO 49	S.1°00'50"E.	10.00'
11-TE	49 TO 50	S.88°59'10"W.	35.00'
	50 TO 51	N.1°00'50"W.	10.00'
	51 TO 48	N.88°59'10"E.	35.00'

PARCEL 12

1ST NATIONAL BANK OF OTTAWA, TRUSTEE TR. NO. 2166

TOTAL HOLDING = 0.193 Ac.±
 TOTAL R.O.W. REQUIRED = 0.013 Ac.±
 REMAINDER = 0.180 Ac.±
 TEMPORARY EASEMENT = 0.018 Ac.±
 PURPOSE: GRADING

PARCEL	POINT TO POINT	BEARING	DISTANCE
12	71 TO 68	S.88°54'43"W.	80.00'
	68 TO 67	N.0°38'17"E.	7.00'
	67 TO 70	N.88°53'31"E.	80.00'
	70 TO 71	S.0°38'35"W.	7.03'
12 TE	71 TO 270	S.0°38'35"W.	10.00'
	270 TO 269	S.88°54'43"W.	80.00'
	269 TO 68	N.0°38'17"E.	10.00'
	68 TO 71	N.88°54'43"E.	80.00'

PARCEL 13

JUDITH A. McCONVILLE

TOTAL HOLDING = 0.097 Ac.±
 TOTAL R.O.W. REQUIRED = 0.006 Ac.±
 REMAINDER = 0.091 Ac.±
 TEMPORARY EASEMENT = 0.009 Ac.±
 PURPOSE: GRADING

PARCEL	POINT TO POINT	BEARING	DISTANCE
13	71 TO 70	N.0°38'35"E.	7.03'
	70 TO 72	N.88°53'31"E.	40.00'
	72 TO 73	S.1°36'32"W.	7.05'
	73 TO 71	S.88°54'41"W.	39.88'
	71 TO 73	N.88°54'41"E.	39.88'
13 TE	73 TO 271	S.1°36'32"W.	10.01'
	271 TO 270	S.88°54'41"W.	39.71'
	270 TO 71	N.0°38'35"E.	10.00'

PARCEL 14

DALE J. McCONVILLE

TOTAL HOLDING = 0.096 Ac.±
 TOTAL R.O.W. REQUIRED = 0.007 Ac.±
 REMAINDER = 0.089 Ac.±
 TEMPORARY EASEMENT = 0.009 Ac.±
 PURPOSE: GRADING

PARCEL	POINT TO POINT	BEARING	DISTANCE
14	75 TO 73	S.88°54'41"W.	40.12'
	73 TO 72	N.1°36'32"E.	7.05'
	72 TO 74	N.88°53'31"E.	40.00'
	74 TO 75	S.0°38'34"W.	7.06'
14 TE	75 TO 272	S.0°38'34"W.	10.00'
	272 TO 271	S.88°54'41"W.	40.29'
	271 TO 73	N.1°36'32"E.	10.01'
	73 TO 75	N.88°54'41"E.	40.12'

PARCEL 15

JAMES L. RICE et ux.

TOTAL HOLDING = 0.200 Ac.±
 TOTAL R.O.W. REQUIRED = 0.014 Ac.±
 REMAINDER = 0.186 Ac.±
 TEMPORARY EASEMENT = 0.019 Ac.±
 PURPOSE: GRADING

PARCEL	POINT TO POINT	BEARING	DISTANCE
15	75 TO 74	N.0°38'34"E.	7.06'
	74 TO 76	N.88°53'31"E.	83.00'
	76 TO 77	S.0°38'32"W.	7.09'
	77 TO 75	S.88°54'41"W.	83.00'
	75 TO 76	N.88°54'41"E.	83.00'
15 TE	76 TO 273	S.0°38'32"W.	10.00'
	273 TO 272	S.88°54'41"W.	83.00'
	272 TO 75	N.0°38'34"E.	10.00'

PARCEL 16

STEPHEN VERNER et ux.

TOTAL HOLDING = 0.101 Ac.±
 TOTAL R.O.W. REQUIRED = 0.007 Ac.±
 REMAINDER = 0.094 Ac.±
 TEMPORARY EASEMENT = 0.009 Ac.±
 PURPOSE: GRADING

PARCEL	POINT TO POINT	BEARING	DISTANCE
16	77 TO 76	N.0°38'32"E.	7.09'
	76 TO 78	N.88°53'31"E.	40.60'
	78 TO 79	S.0°30'27"E.	7.10'
	79 TO 77	S.88°54'41"W.	40.74'
16 TE	77 TO 79	N.88°54'41"E.	40.74'
	79 TO 274	S.0°30'27"E.	10.00'
	274 TO 273	S.88°54'41"W.	40.94'
	273 TO 77	N.0°38'32"E.	10.00'

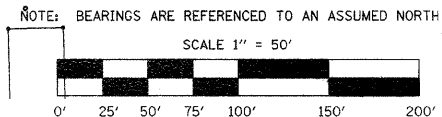
PARCEL 18A

MICHAEL J. HUGHES, et al.

TOTAL HOLDING = 0.824 Ac.±
 TEMPORARY EASEMENT = 0.044 Ac.±
 PURPOSE: GRADING

PARCEL	POINT TO POINT	BEARING	DISTANCE
21 TE-1	95 TO 96	S.1°05'19"E.	35.00'
	96 TO 97	N.88°54'41"W.	50.00'
	97 TO 94	N.1°05'19"W.	35.00'
	94 TO 95	N.88°54'41"E.	50.00'

FOR AREA TABLE OF PARCEL 21 SEE SHEET 3



RIGHT OF WAY PLANS	
ROUTE	C.H.20 (ETNA RD. & CHAMPLAIN ST.)
SECTION	06-00275-00-PV
PROJECT	
COUNTY	LASALLE
JOB NUMBER	C-93-063-07
STATION	29+30 TO 37+50
SHEET	3 OF 8 SCALE 1" = 50'

I VINCENT D. BRANDOW, HEREBY CERTIFY THAT I AM A PROFESSIONAL LAND SURVEYOR OF THE STATE OF ILLINOIS, THAT THE SURVEY OF PROPOSED ETNA ROAD & CO. HWY 20 WAS MADE BY RENWICK & ASSOCIATES, INC. UNDER MY DIRECTION, AND THAT THE SURVEY IS TRUE AND COMPLETE AS SHOWN TO THE BEST OF MY KNOWLEDGE AND BELIEF, THAT ALL MONUMENTS AND MARKS ARE OF THE CHARACTER AND OCCUPY THE POSITION SHOWN THEREON, AND ARE SUFFICIENT TO ENABLE THE SURVEY TO BE RETRACED. THIS PROFESSIONAL SERVICE CONFORMS TO THE CURRENT ILLINOIS MINIMUM STANDARDS FOR A BOUNDARY SURVEY.

DATE: _____

ILLINOIS PROFESSIONAL LAND SURVEYOR
 NO. 2655
 11-30-08
 EXPIRATION DATE