

CONTRACT NO. 87352

PARCEL	POINT TO POINT	BEARING	DISTANCE
22 TE	65 TO 113	N.1°05'46"W.	10.00'
	113 TO 114	N.88°53'31"E.	54.91'
	114 TO 115	N.1°05'19"W.	21.50'
	115 TO 116	N.88°54'41"E.	35.00'
	116 TO 117	S.1°05'19"E.	25.00'
22 PE-1	117 TO 118	N.88°54'41"E.	97.90'
	118 TO 119	S.1°05'46"E.	6.46'
	119 TO 65	S.88°53'31"W.	187.81'
	112 TO 109	N.1°05'19"W.	6.51'
	109 TO 110	N.88°54'41"W.	20.00'
22 PE-2	110 TO 111	S.1°05'19"E.	6.50'
	111 TO 112	S.88°53'31"W.	20.00'
	120 TO 121	N.1°05'19"W.	6.45'
	121 TO 122	N.88°54'41"E.	20.00'
	122 TO 123	S.1°05'19"E.	6.44'
123 TO 120	S.88°53'31"W.	20.00'	

**PARCEL 22**  
**JOHN L. CANTLIN**  
 TOTAL HOLDING = 0.904 Ac.±  
 TOTAL PERM. EASEMENT = 0.006 Ac.±  
 PE-1 = 0.003 Ac.± (130 SO.FT.)  
 PE-2 = 0.003 Ac.± (130 SO.FT.)  
 PURPOSE: DRAINAGE  
 TEMPORARY EASEMENT = 0.053 Ac.±  
 PURPOSE: DRIVE CONSTRUCTION, GRADING & SHAPING

**PARCEL 23**  
**WILLIAM J. DENTON**  
 TOTAL HOLDING = 0.904 Ac.±  
 TEMPORARY EASEMENT = 0.048 Ac.±  
 PURPOSE: DRIVE CONSTRUCTION, GRADING & SHAPING

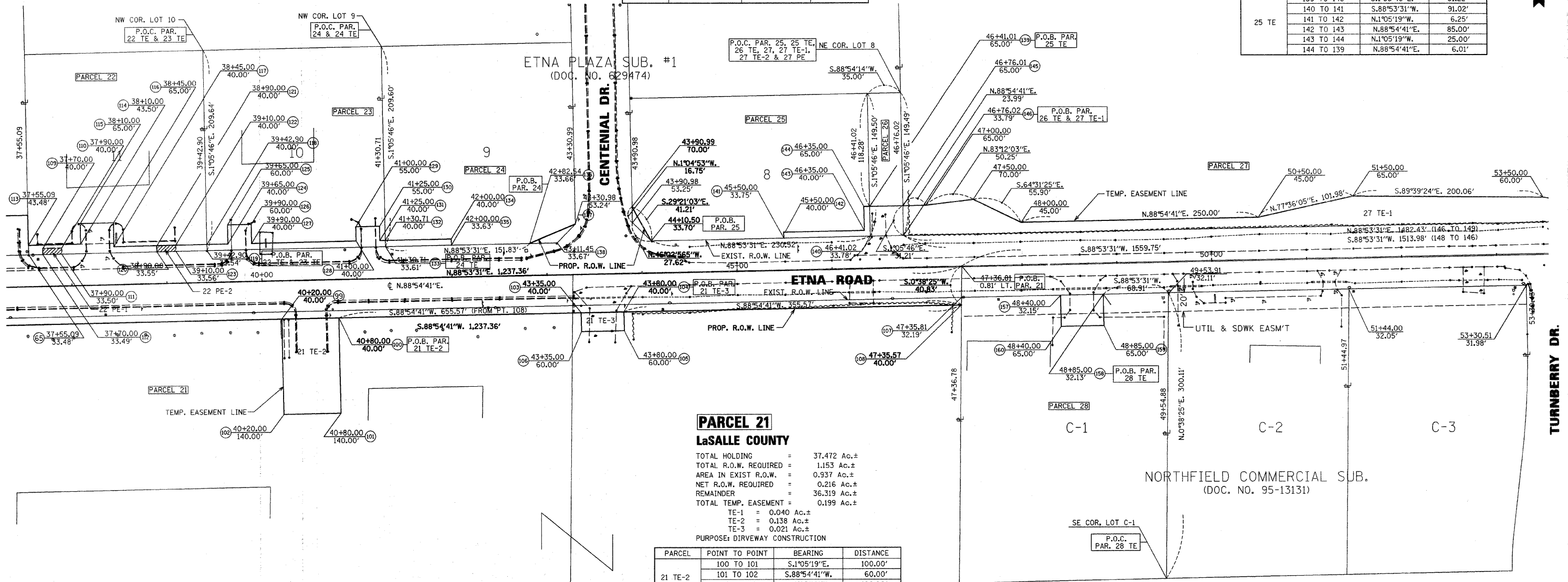
PARCEL	POINT TO POINT	BEARING	DISTANCE
23 TE	119 TO 118	N.1°05'46"W.	6.46'
	118 TO 124	N.88°54'41"E.	22.10'
	124 TO 125	N.1°05'19"W.	20.00'
	125 TO 126	N.88°54'41"E.	25.00'
	126 TO 127	S.1°05'19"E.	20.00'
	127 TO 128	N.88°54'41"E.	110.00'
	128 TO 129	N.1°05'19"W.	15.00'
	129 TO 130	N.88°54'41"E.	25.00'
	130 TO 131	S.1°05'19"E.	15.00'
	131 TO 132	N.88°54'41"E.	5.71'
	132 TO 133	S.1°05'46"E.	6.39'
	133 TO 119	S.88°53'31"W.	187.81'

**PARCEL 24**  
**RAMESWARA KOGANTI**  
 TOTAL HOLDING = 0.959 Ac.±  
 TOTAL R.O.W. REQUIRED = 0.007 Ac.±  
 REMAINDER = 0.952 Ac.±  
 TEMPORARY EASEMENT = 0.010 Ac.±  
 PURPOSE: DRIVE CONSTRUCTION, GRADING & SHAPING

PARCEL	POINT TO POINT	BEARING	DISTANCE
24	136 TO 137	N.66°54'20"E.	52.25'
	137 TO 138	S.43°51'24"W.	27.65'
	138 TO 136	S.88°53'31"W.	28.91'
	133 TO 132	N.1°05'46"W.	6.39'
24 TE	132 TO 134	N.88°54'41"E.	69.29'
	134 TO 135	S.1°05'19"E.	6.37'
	135 TO 133	S.88°53'31"W.	69.29'

**PARCEL 25**  
**ROBERT A. SMITH, et al.**  
 TOTAL HOLDING = 0.854 Ac.±  
 TOTAL R.O.W. REQUIRED = 0.004 Ac.±  
 REMAINDER = 0.850 Ac.±  
 TEMPORARY EASEMENT = 0.017 Ac.±  
 PURPOSE: GRADING AND SHAPING

PARCEL	POINT TO POINT	BEARING	DISTANCE
25 TE	139 TO 140	S.1°05'46"E.	31.22'
	140 TO 141	S.88°53'31"W.	91.02'
	141 TO 142	N.1°05'19"W.	6.25'
	142 TO 143	N.88°54'41"E.	85.00'
	143 TO 144	N.1°05'19"W.	25.00'
144 TO 139	N.88°54'41"E.	6.01'	



**PARCEL 21**  
**LaSALLE COUNTY**  
 TOTAL HOLDING = 37.472 Ac.±  
 TOTAL R.O.W. REQUIRED = 1.153 Ac.±  
 AREA IN EXIST R.O.W. = 0.937 Ac.±  
 NET R.O.W. REQUIRED = 0.216 Ac.±  
 REMAINDER = 36.319 Ac.±  
 TOTAL TEMP. EASEMENT = 0.199 Ac.±  
 TE-1 = 0.040 Ac.±  
 TE-2 = 0.138 Ac.±  
 TE-3 = 0.021 Ac.±  
 PURPOSE: DRIVEWAY CONSTRUCTION

PARCEL	POINT TO POINT	BEARING	DISTANCE
21 TE-2	100 TO 101	S.1°05'19"E.	100.00'
	101 TO 102	S.88°54'41"W.	60.00'
	102 TO 99	N.1°05'19"W.	100.00'
21 TE-3	99 TO 100	N.88°54'41"E.	60.00'
	103 TO 104	N.88°54'41"E.	45.00'
	104 TO 105	S.1°05'19"E.	20.00'
	105 TO 106	S.88°54'41"W.	45.00'
106 TO 103	N.1°05'19"W.	20.00'	

**PARCEL 28**  
**MARY L. FERGUSON CENTER**  
 TOTAL HOLDING = 1.502 Ac.±  
 TEMPORARY EASEMENT = 0.034 Ac.±  
 PURPOSE: DRIVEWAY CONSTRUCTION

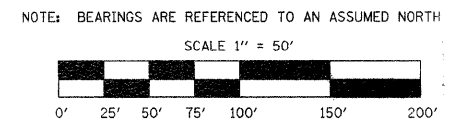
PARCEL	POINT TO POINT	BEARING	DISTANCE
28 TE	158 TO 159	S.1°05'19"E.	32.87'
	159 TO 160	S.88°54'41"W.	45.00'
	160 TO 157	N.1°05'18"W.	32.85'
	157 TO 158	N.88°53'31"E.	45.00'

**PARCEL 26**  
**ETNA OIL CO., INC.**  
 TOTAL HOLDING = 0.120 Ac.±  
 TEMPORARY EASEMENT = 0.025 Ac.±  
 PURPOSE: DRIVEWAY CONSTRUCTION

PARCEL	POINT TO POINT	BEARING	DISTANCE
26 TE	146 TO 140	S.88°53'30"W.	35.00'
	140 TO 139	N.1°05'46"W.	31.22'
	139 TO 145	N.88°54'41"E.	35.00'
	145 TO 146	S.1°05'46"E.	31.21'

I VINCENT D. BRANDOW, HEREBY CERTIFY THAT I AM A PROFESSIONAL LAND SURVEYOR OF THE STATE OF ILLINOIS, THAT THE SURVEY OF PROPOSED ETNA ROAD & CO. HWY 20 WAS MADE BY RENWICK & ASSOCIATES, INC. UNDER MY DIRECTION, AND THAT THE SURVEY IS TRUE AND COMPLETE AS SHOWN TO THE BEST OF MY KNOWLEDGE AND BELIEF, THAT ALL MONUMENTS AND MARKS ARE OF THE CHARACTER AND OCCUPY THE POSITION SHOWN THEREON, AND ARE SUFFICIENT TO ENABLE THE SURVEY TO BE RETRACED. THIS PROFESSIONAL SERVICE CONFORMS TO THE CURRENT ILLINOIS MINIMUM STANDARDS FOR A BOUNDARY SURVEY.

DATE: \_\_\_\_\_  
 ILLINOIS PROFESSIONAL LAND SURVEYOR  
 NO. 2655  
 11-30-08  
 EXPIRATION DATE



NOTE: BEARINGS ARE REFERENCED TO AN ASSUMED NORTH

SCALE 1" = 50'

RIGHT OF WAY PLANS	
ROUTE	C.H.20 (ETNA RD. & CHAMPLAIN ST.)
SECTION	06-00275-00-PV
PROJECT	
COUNTY	LASALLE
JOB NUMBER	C-93-063-07
STATION	37+50 TO 53+50
SHEET	4 OF 8 SCALE 1" = 50'