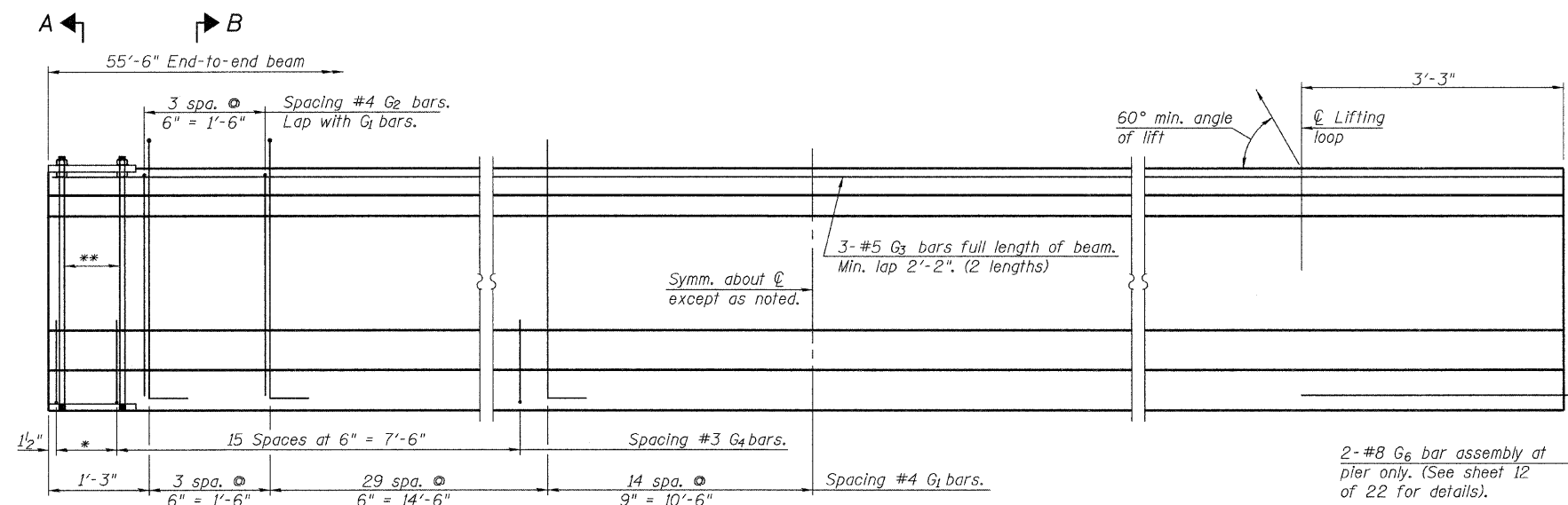


ROUTE NO.	SECTION	COUNTY	TOTAL SHEETS	SHEET NO.
CH 33	*	LASALLE	53	20
FED. ROAD DIST. NO. 7		ILLINOIS	PROJECT	BRS-1365(111)

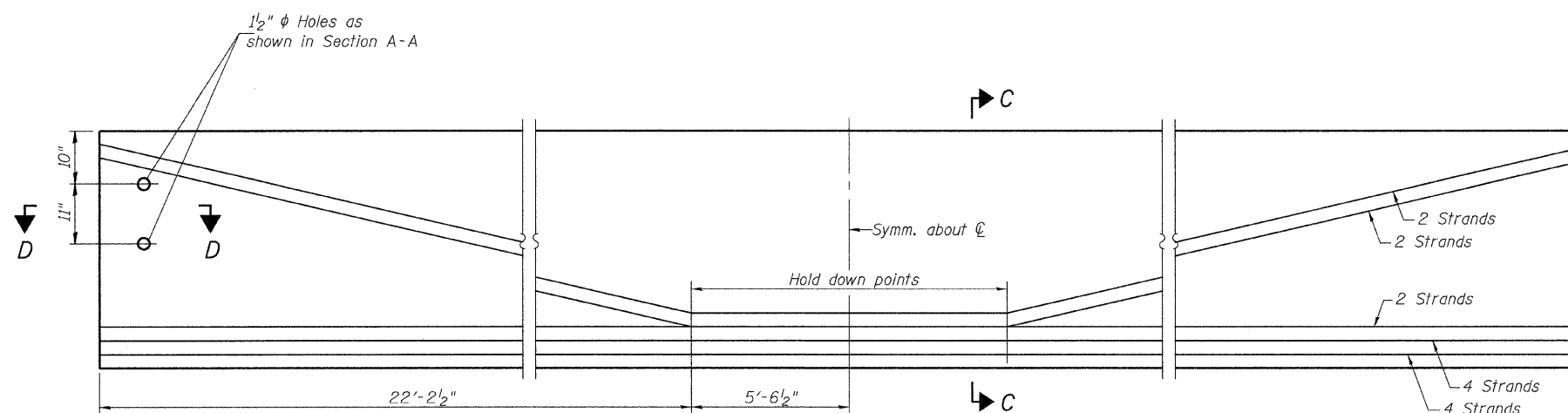
*05-00626-00-BR CONTRACT #87368



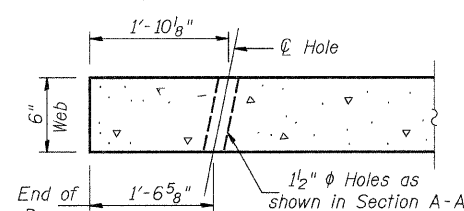
ELEVATION OF BEAM
(Showing reinforcement & dimensions)

*3 spaces at 3" = 9".
 **4- $\frac{3}{4}$ " ϕ threaded dowel rods
 at 3" cts., Each Face.

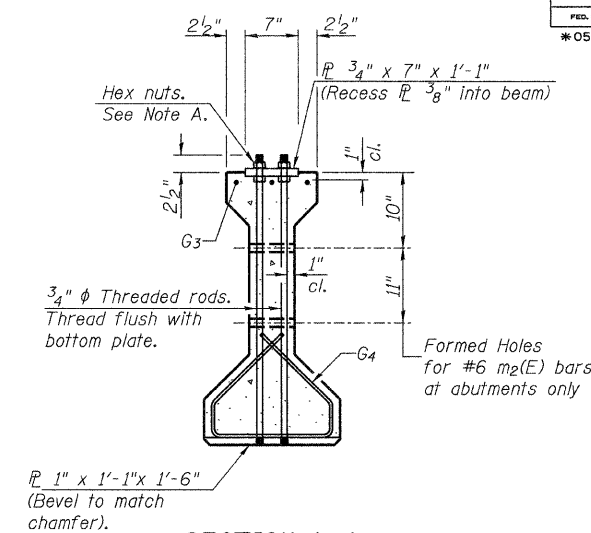
Note A:
Hex nuts (top and bottom)
with lock washers (top).
Only tighten sufficiently
to compress lock washers.



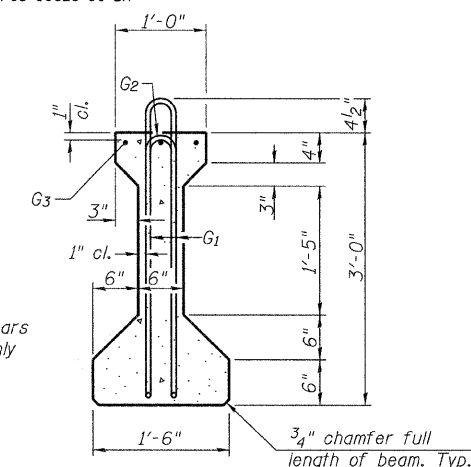
ELEVATION OF BEAM
(Showing prestressing steel)



SECTION D-D



SECTION A-A



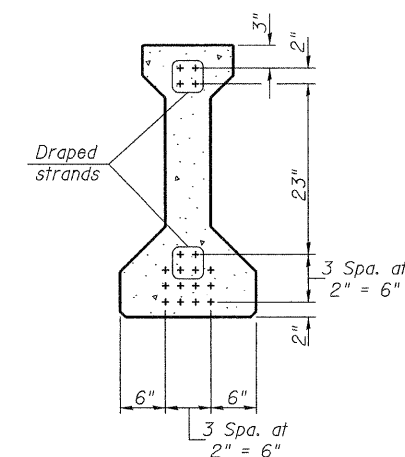
SECTION B-B

***BAR LIST
ONE BEAM ONLY

Bar	No.	Size	Length	Shape
G ₁	93	#4	7'-5"	∩
G ₂	8	#4	5'-8"	∩
G ₃	6	#5	28'-9"	—
G ₄	38	#3	4'-1"	⌒
G _c	****2	#8	3'-9"	

***For information only
**** 4 Bars for Center Span

Notes:
See sheet 12 of 22 for additional details
and Bill of Material.
Required release strength, f'_{ci} , shall
be 5,000 psi.



SECTION C-C

PPC I-BEAMS