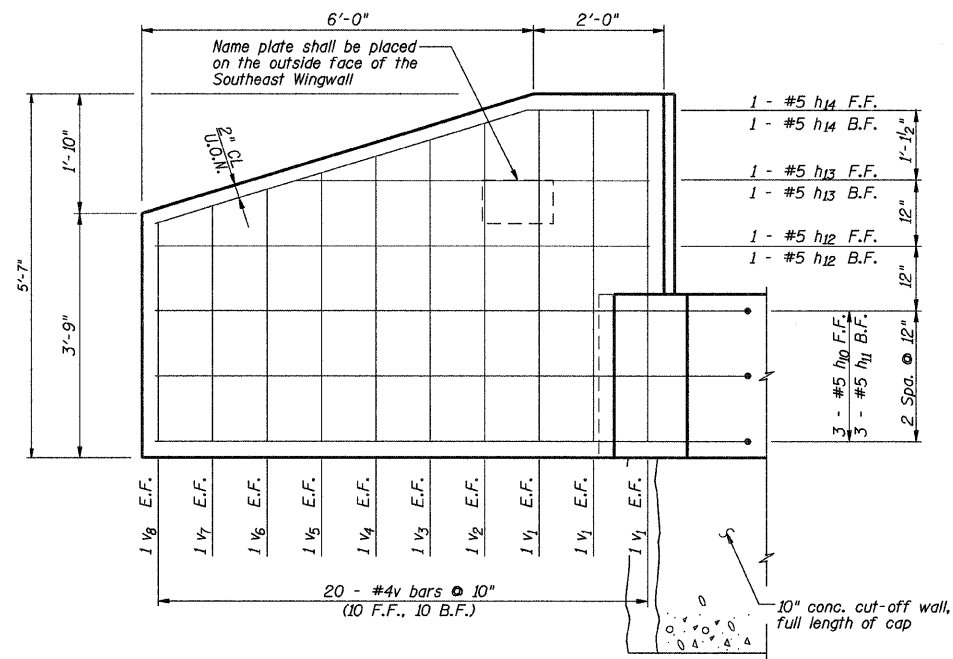
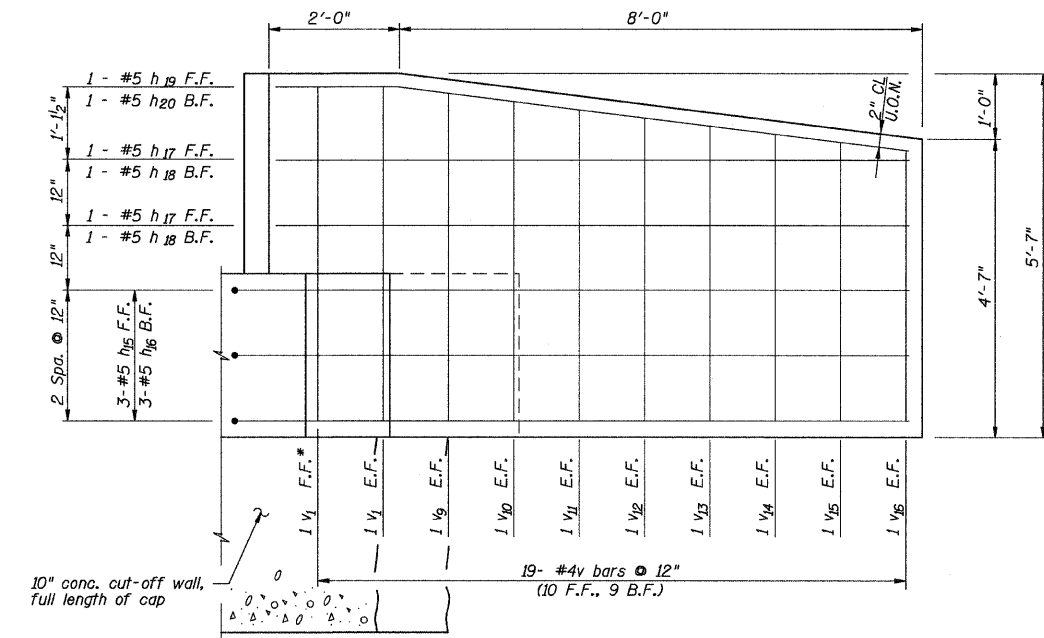


ROUTE NO.	SECTION	COUNTY	SHEET NO.	SHEET
C.H. 48	*	Kankakee	56	31
FED. ROAD DIST. NO. 7	ILLINOIS	FED. AID PROJECT		

*85-00221-00-BR

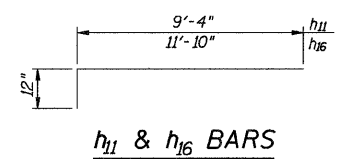


ELEV. B-B
Wingwalls shall be poured after beams are in place.

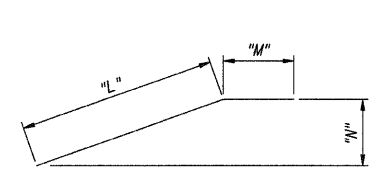


ELEV. C-C
Wingwalls shall be poured after beams are in place.

F.F.* - Front Face Only
F.F. - Front Face
B.F. - Back Face
E.F. - Each Face
U.O.N. - Unless otherwise noted

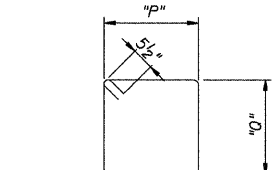


h₁₁ & h₁₆ BARS



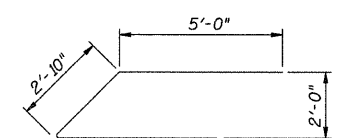
h₁₄, h₁₉, & h₂₀ BARS

Bar	"L"	"M"	"N"
h ₁₄	5'-11"	1'-11"	1'-9"
h ₁₉	7'-10"	1'-10"	12"
h ₂₀	7'-10"	4"	12"



s₁₀, s₁₁, & s₁₂ BARS

Bar	"P"	"Q"
s ₁₀	2'-2"	2'-2"
s ₁₁	2'-4"	2'-2"
s ₁₂	3'-1"	2'-2"



BAR U₁₀

DSGN	K.J. Hoffmann				
DR	K.J. Hoffmann				
CHK	J.R. Wolf				
APVD	A. Fraunhofer	NO.	DATE	REVISION	BY

FRAUENHÖFFER
Fraunhofer and Associates, P.C. Consulting Engineers
3002 Crossing Court Champaign, IL 61822 217-351-6268

ABUTMENTS (SHEET 2 OF 2)		SHEET 31
CH 48 OVER HORSE CREEK SECTION 85-00221-00-BR KANKAKEE COUNTY		DWG NO. 85019-abt.dgn DATE DEC 2007 PROJ NO. 85019