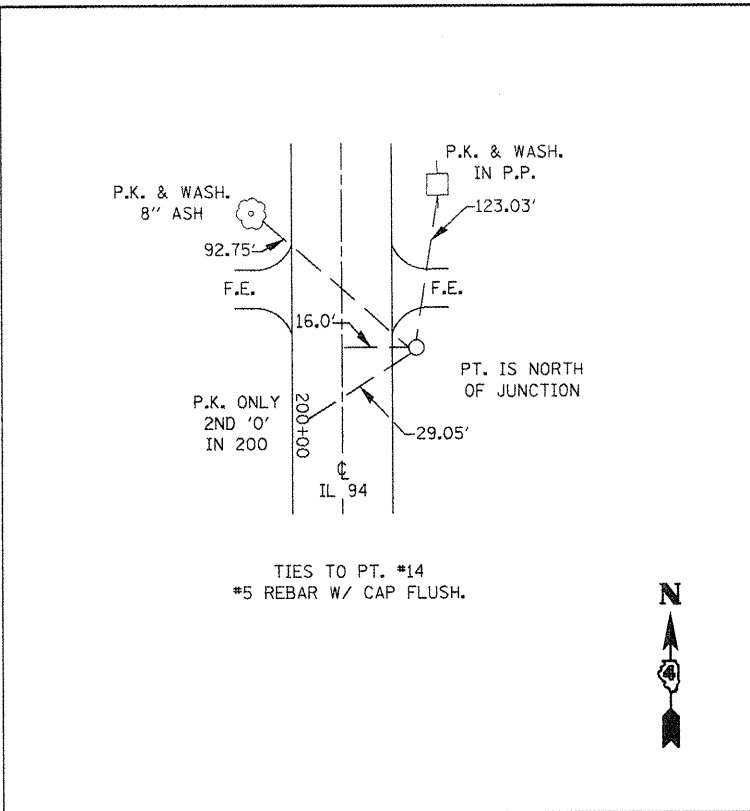
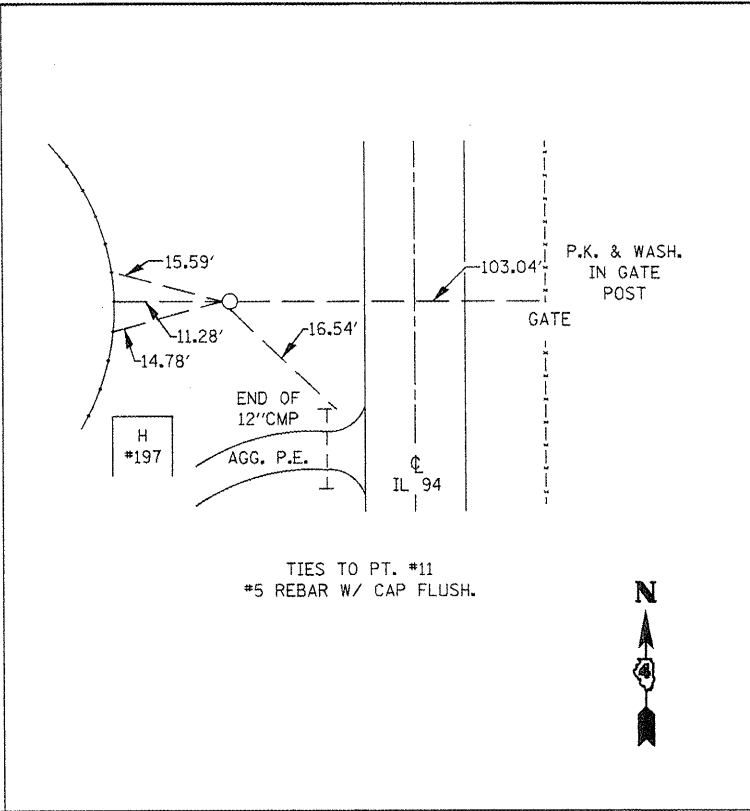


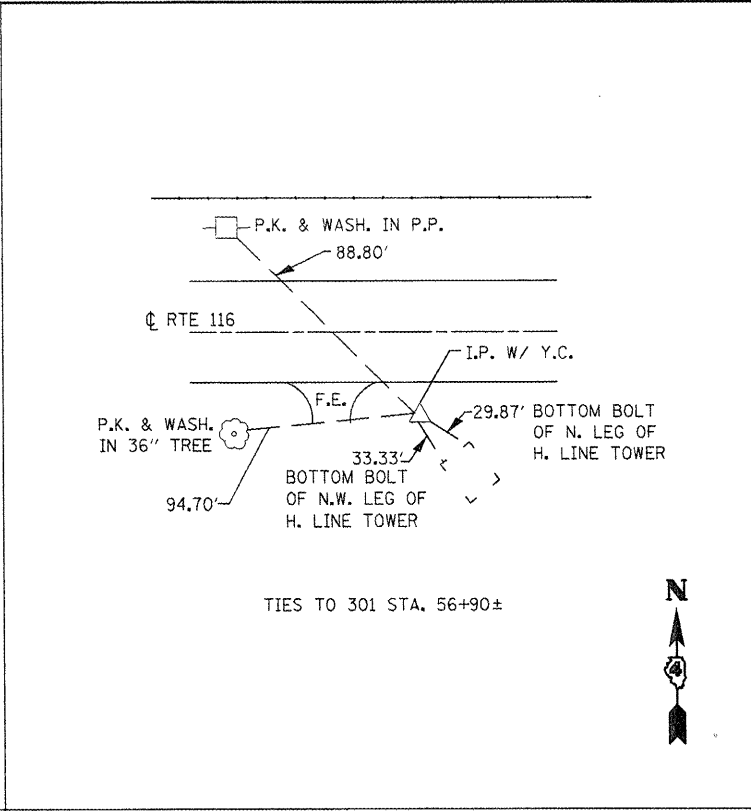
TIES TO PT. #10  
#5 REBAR W/ CAP FLUSH.



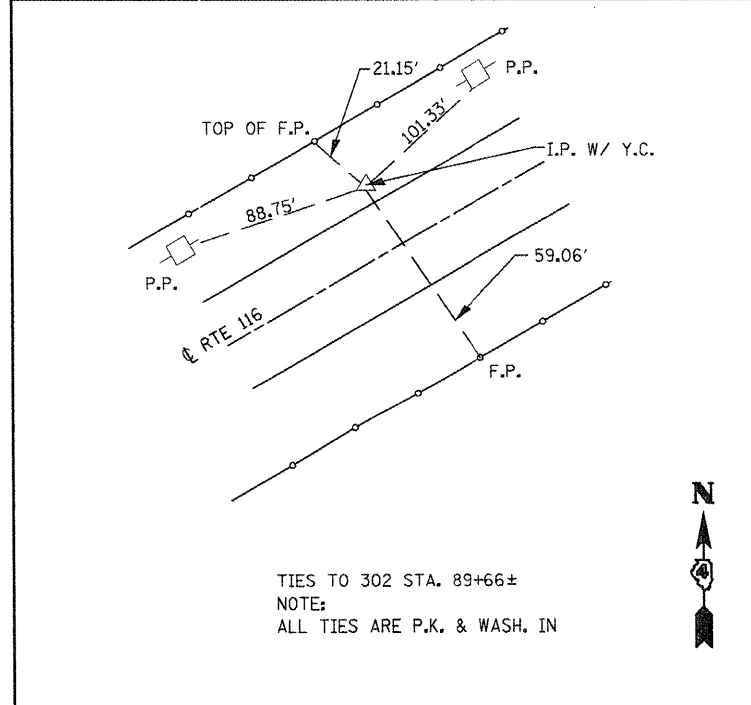
TIES TO PT. #14  
#5 REBAR W/ CAP FLUSH.



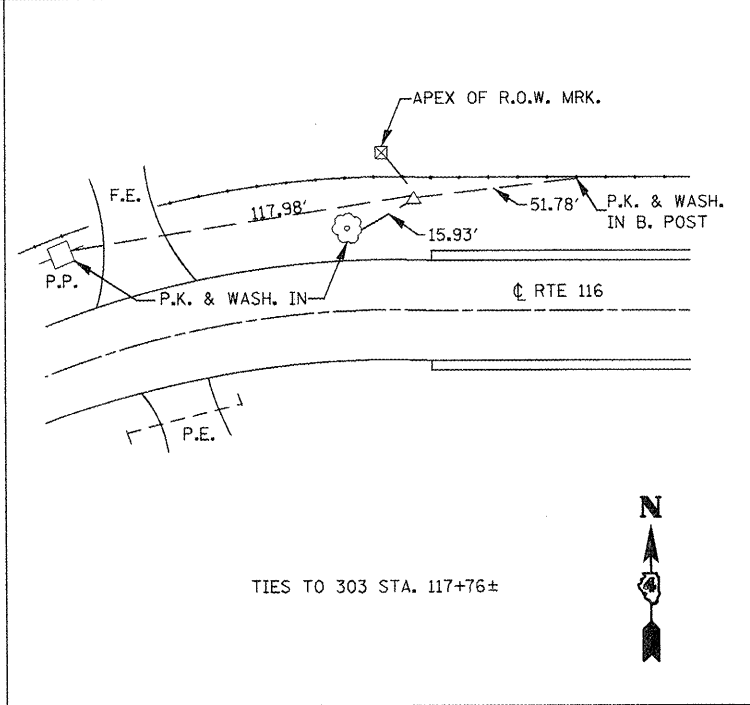
TIES TO PT. #11  
#5 REBAR W/ CAP FLUSH.



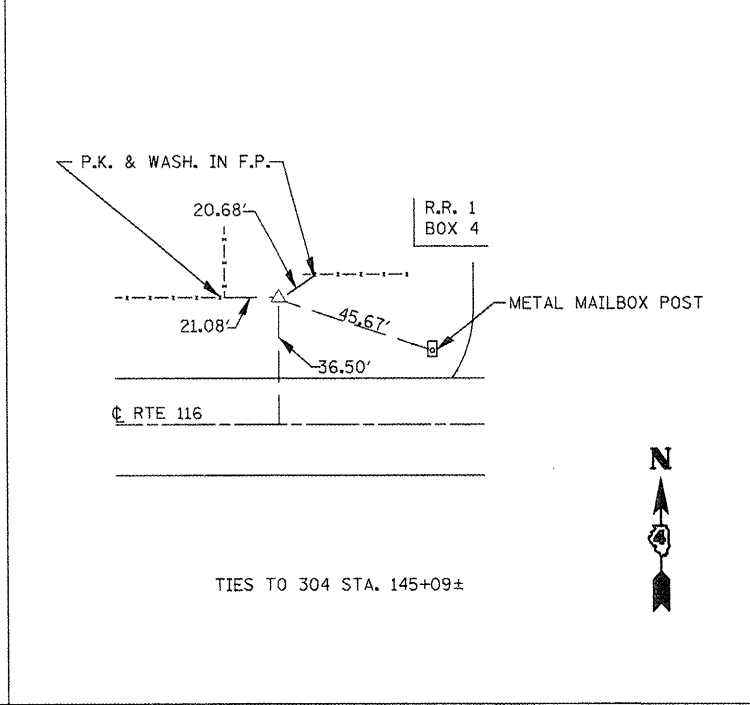
TIES TO 301 STA. 56+90±



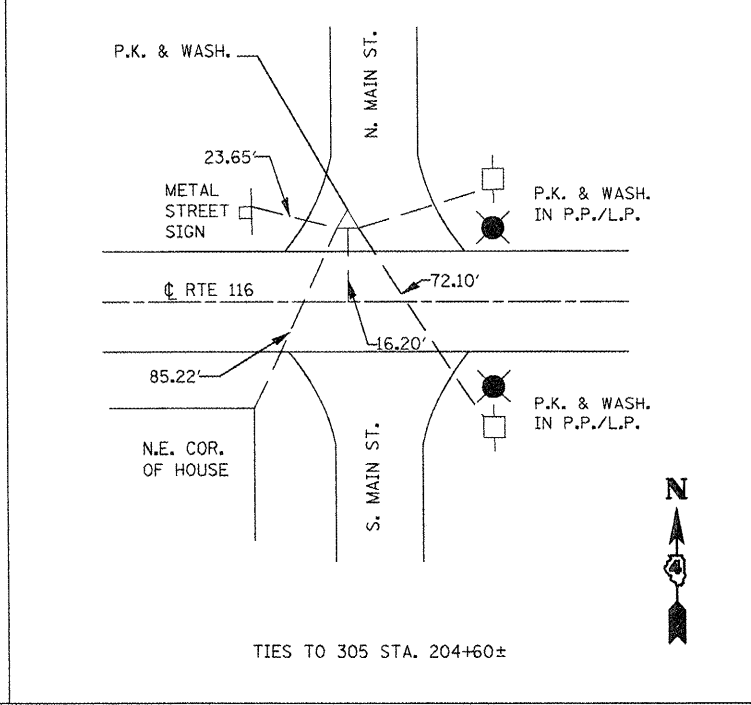
TIES TO 302 STA. 89+66±  
NOTE:  
ALL TIES ARE P.K. & WASH. IN



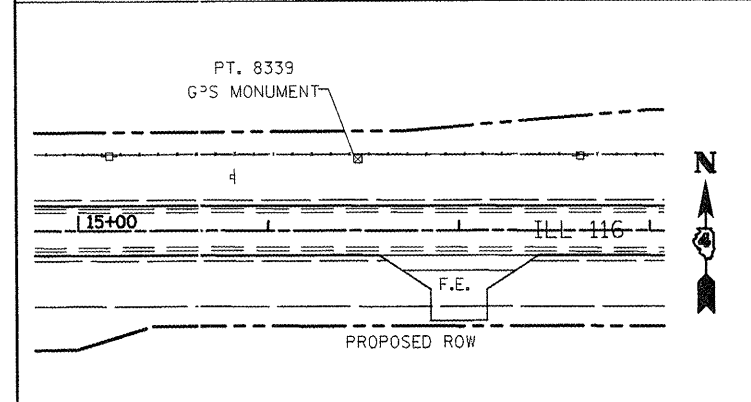
TIES TO 303 STA. 117+76±



TIES TO 304 STA. 145+09±



TIES TO 305 STA. 204+60±



SURVEY BOOKS  
2810A-2810D

GROUND COORDINATES (0.999949)

	N	E	ELEV.
10	1492712.9122	2113793.5739	714.348
11	1496970.3826	2108474.0353	700.631
301	1495514.3409	2097773.0839	658.0731
302	1495956.5780	2100931.8787	668.1371
303	1497196.3177	2103405.8969	683.1617
304	1497107.0065	2106049.3422	692.6000
305	1496982.6437	2112091.8693	709.3667
8339	1495582.5700	2093721.7136	634.8500

DRAWING NOT TO SCALE

FILE NAME = miscsheets.dgn	USER NAME = ghidineen	DESIGNED -	REVISED -
		DRAWN -	REVISED -
		CHECKED -	REVISED -
		DATE -	REVISED -

STATE OF ILLINOIS  
DEPARTMENT OF TRANSPORTATION

TIE POINTS & BENCHMARKS			
SCALE:	SHEET NO.	OF SHEETS	STA. TO STA.

F.A.P. RTE.	SECTION	COUNTY	TOTAL SHEETS	SHEET NO.
665	(136,137)W&RS-3(136R)1098R-2	HENDERSON		52
CONTRACT NO. 88773				
ILLINOIS FED. AID PROJECT				