

**LEGEND**

- PROPOSED RIGHT OF WAY LINE
- EXISTING RIGHT OF WAY LINE
- PROPOSED TEMPORARY EASEMENT LINE
- PROPERTY LINE
- EXISTING CENTERLINE

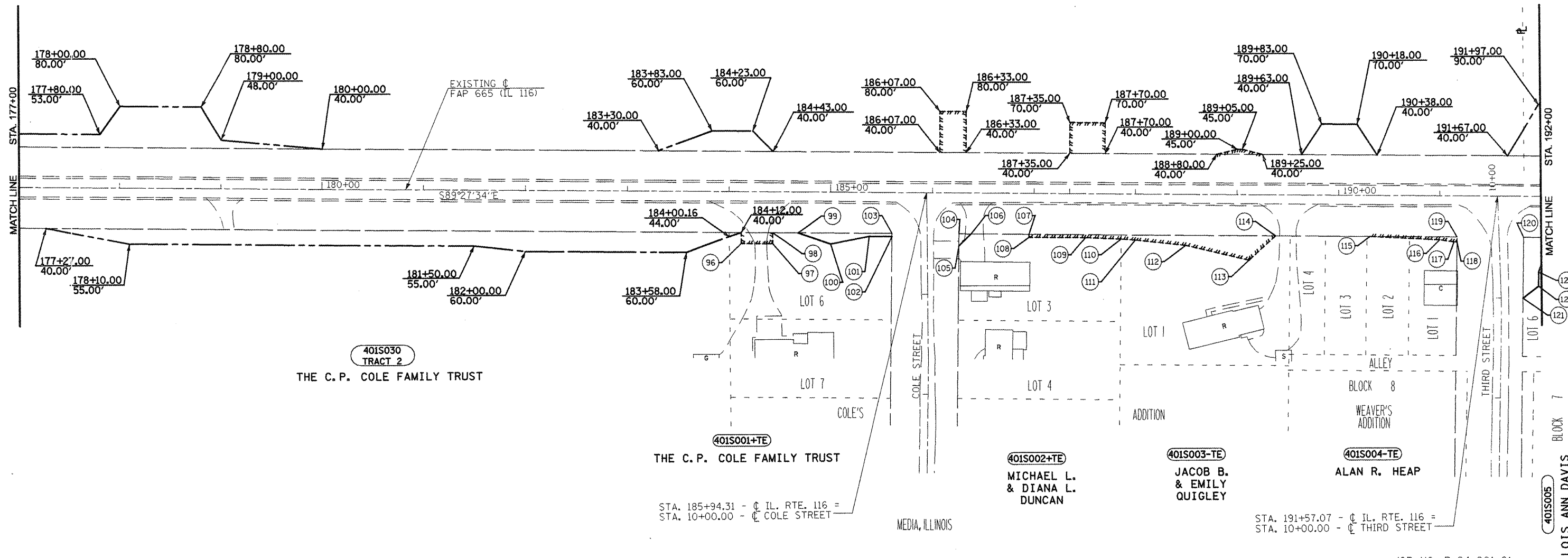


**STATION OFFSET SCHEDULE**

96	184+12.00	51.00'	110	187+86.16	44.00'
97	184+43.00	51.00'	111	188+00.00	45.00'
98	184+43.00	40.00'	112	188+50.00	50.00'
99	184+68.00	40.00'	113	189+12.00	64.00'
100	185+00.00	51.00'	114	189+38.00	40.00'
101	185+38.00	43.00'	115	190+31.00	40.00'
102	185+60.17	43.00'	116	191+00.00	43.00'
103	185+60.19	40.00'	117	191+14.00	45.00'
104	186+26.19	40.00'	118	191+17.02	45.00'
105	186+26.11	52.00'	119	191+17.06	40.00'
106	186+38.00	40.00'	120	191+83.06	40.00'
107	186+95.00	40.00'	121	191+82.55	100.00'
108	186+95.00	43.00'	122	191+98.00	88.00'
109	187+51.00	43.00'	123	191+98.00	74.00'

NORTHWEST QUARTER SECTION 15,  
TOWNSHIP 9 NORTH, RANGE 4 WEST,  
OF THE FOURTH PRINCIPAL MERIDIAN

**401S026 TRACTS**  
**2,3,4,5 + TE TRACTS 2,3,4**  
EVA MARIE LINK AS TRUSTEE  
OF THE EVA MARIE LINK TRUST



APPROVED BY \_\_\_\_\_ DISTRICT ENGINEER  
DATE \_\_\_\_\_

DRAWN BY \_\_\_\_\_  
WRITTEN BY \_\_\_\_\_  
CHECKED BY \_\_\_\_\_  
INSPECTED BY \_\_\_\_\_

ALL SURVEY INFORMATION BASED ON THE  
ILLINOIS STATE PLANE COORDINATE SYSTEM  
NAD.83, ILLINOIS WEST ZONE, GEOID03  
APPLICABLE GRID FACTOR = 0.999953199

JOB NO. R-94-001-01

**RIGHT OF WAY PLANS**  
F.A.P. ROUTE 665(IL 116)

PROJECT \_\_\_\_\_ SECTION 136,137W&RS-3  
STATION 177+00 \_\_\_\_\_ TO \_\_\_\_\_  
STATION 192+00 \_\_\_\_\_  
COUNTY HENDERSON  
SCALE 1"=100' SHEET 67 OF 77