

APPROVED BY _____
 DISTRICT ENGINEER
 DATE _____

LEGEND

- PROPOSED RIGHT OF WAY LINE
- EXISTING RIGHT OF WAY LINE
- PROPOSED TEMPORARY EASEMENT LINE
- PROPERTY LINE
- EXISTING CENTERLINE



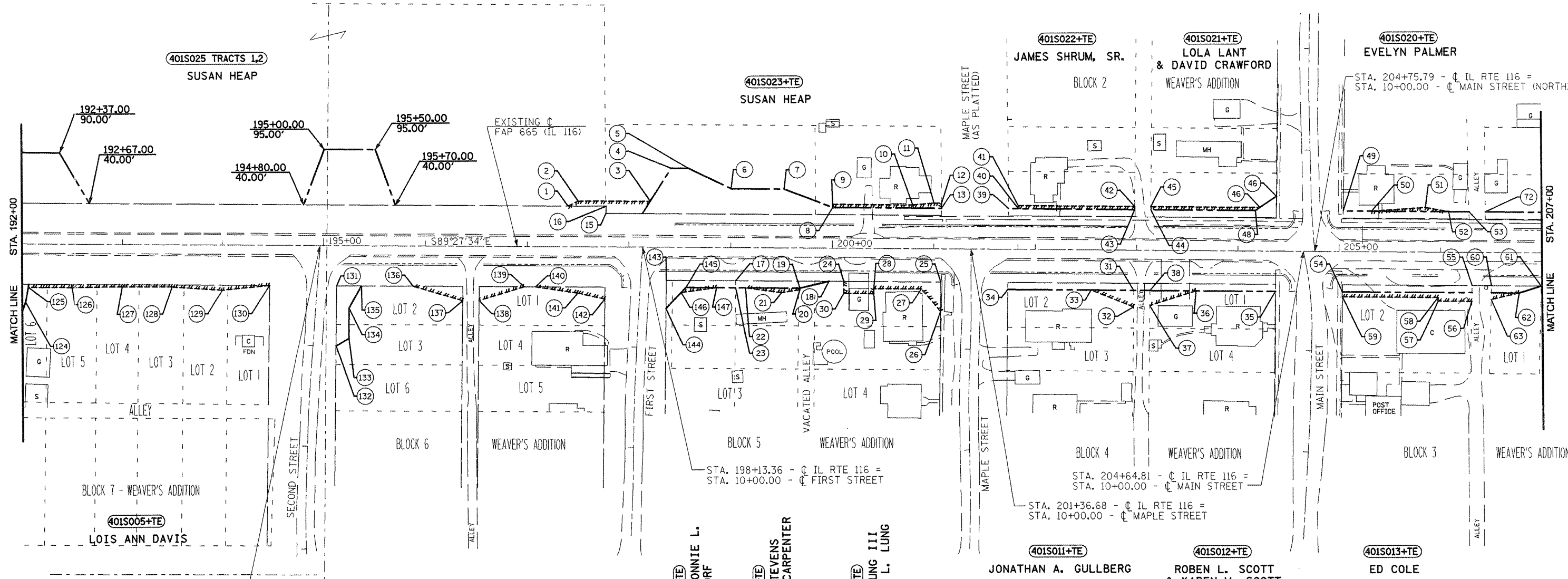
WEST LINE OF THE
 NORTHEAST QUARTER
 OF SECTION 15
 N00°48'17"E

NORTHWEST QUARTER SECTION 15
 TOWNSHIP 9 NORTH, RANGE 4 WEST
 OF THE 4TH PRINCIPAL MERIDIAN

NORTHEAST QUARTER SECTION 15
 TOWNSHIP 9 NORTH, RANGE 4 WEST
 OF THE 4TH PRINCIPAL MERIDIAN

STATION/OFFSET SCHEDULE

1 197+40.00, 40.00'	17 199+04.71, 33.00'	33 202+55.00, 40.00'	49 205+03.87, 40.00'	65 192+04.00, 58.00'	81 197+08.00, 40.00'
2 197+50.00, 45.00'	18 199+97.00, 33.00'	34 201+73.01, 40.00'	50 205+32.00, 40.00'	66 192+06.50, 43.00'	82 197+50.00, 46.00'
3 198+20.73, 45.00'	19 199+67.00, 40.00'	35 204+37.37, 40.00'	51 205+85.00, 44.00'	67 192+50.00, 43.00'	83 197+76.58, 52.00'
4 198+41.00, 78.00'	20 199+67.00, 42.00'	36 203+59.00, 40.00'	52 206+08.00, 40.00'	68 193+00.00, 42.00'	84 198+36.69, 33.00'
5 198+58.00, 78.00'	21 199+50.00, 45.00'	37 203+13.10, 54.00'	53 206+28.06, 40.00'	69 193+50.00, 42.00'	85 198+36.53, 61.00'
6 199+00.00, 58.00'	22 199+14.00, 40.00'	38 203+13.19, 40.00'	54 205+03.37, 40.00'	70 194+00.00, 45.00'	86 198+56.00, 40.00'
7 199+52.00, 58.00'	23 199+04.67, 40.00'	39 201+73.49, 40.00'	55 206+27.55, 40.00'	71 194+46.85, 40.00'	87 198+51.36, 45.00'
8 200+00.00, 40.00'	24 200+11.00, 33.00'	40 201+83.00, 40.00'	56 206+27.49, 49.00'	72 195+12.85, 40.00'	88 198+86.00, 40.00'
9 200+00.00, 43.00'	25 201+07.05, 33.00'	41 201+83.00, 43.00'	57 205+98.00, 49.00'	73 195+12.43, 100.00'	
10 200+79.00, 43.00'	26 201+06.87, 63.00'	42 202+97.70, 43.00'	58 205+98.00, 45.00'	74 195+25.00, 92.00'	
11 201+00.00, 45.00'	27 200+88.00, 40.00'	43 202+97.68, 40.00'	59 205+03.32, 45.00'	75 195+25.00, 62.00'	
12 201+07.52, 45.00'	28 200+41.00, 40.00'	44 203+13.68, 40.00'	60 206+43.55, 40.00'	76 195+37.00, 40.00'	
13 201+07.49, 40.00'	29 200+41.00, 45.00'	45 203+13.70, 43.00'	61 207+00.00, 33.00'	77 195+83.00, 40.00'	
14 198+13.00, 33.00'	30 200+11.00, 45.00'	46 204+21.49, 43.00'	62 206+77.00, 40.00'	78 196+36.66, 55.00'	
15 197+77.45, 33.00'	31 202+97.18, 40.00'	47 204+37.96, 54.00'	63 206+43.50, 47.00'	79 196+52.66, 54.00'	
16 197+77.49, 40.00'	32 202+97.09, 56.00'	48 204+17.00, 40.00'	64 206+44.06, 40.00'	80 196+97.00, 40.00'	



JOB NO. R-94-001-01

RIGHT OF WAY PLANS
 F.A.P. ROUTE 665(IL 116)

PROJECT _____ SECTION 136.137W&RS-3

STATION 192+00 _____ TO _____

STATION 207+00 _____

COUNTY HENDERSON

SCALE 1"=100' SHEET 68 OF 17

ALL SURVEY INFORMATION BASED ON THE ILLINOIS STATE PLANE COORDINATE SYSTEM NAD.83, ILLINOIS WEST ZONE, GEOID03 APPLICABLE GRID FACTOR = 0.999953199