

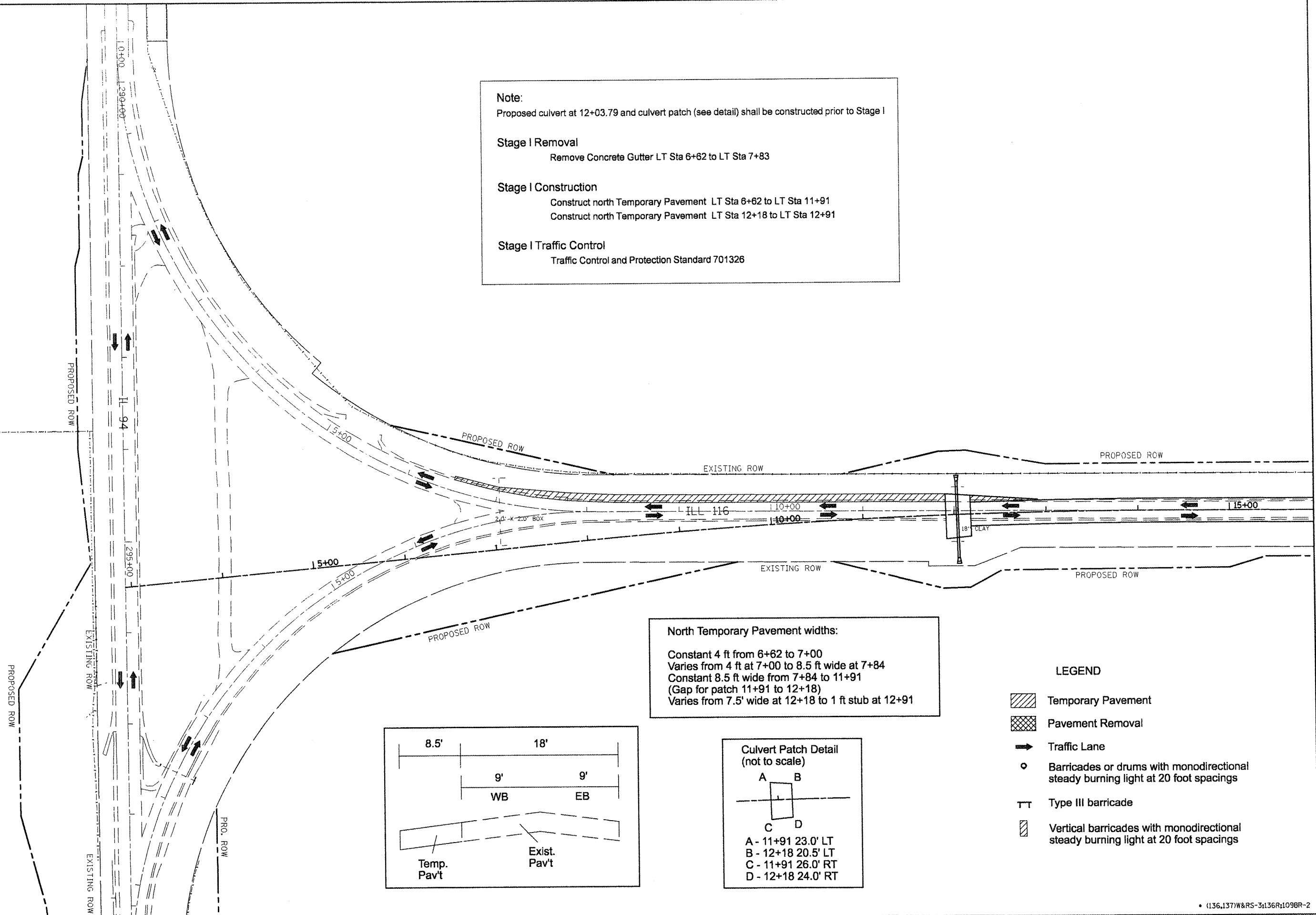


Note:
Proposed culvert at 12+03.79 and culvert patch (see detail) shall be constructed prior to Stage I

Stage I Removal
Remove Concrete Gutter LT Sta 6+62 to LT Sta 7+83

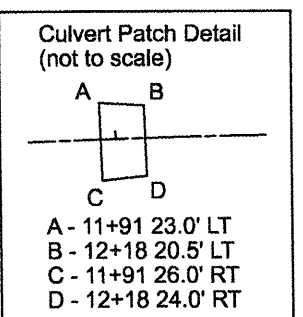
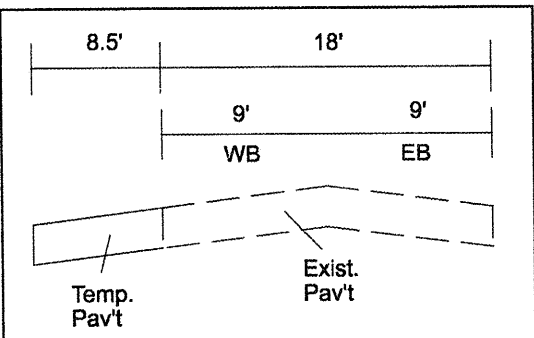
Stage I Construction
Construct north Temporary Pavement LT Sta 6+62 to LT Sta 11+91
Construct north Temporary Pavement LT Sta 12+18 to LT Sta 12+91

Stage I Traffic Control
Traffic Control and Protection Standard 701326



North Temporary Pavement widths:
Constant 4 ft from 6+62 to 7+00
Varies from 4 ft at 7+00 to 8.5 ft wide at 7+84
Constant 8.5 ft wide from 7+84 to 11+91
(Gap for patch 11+91 to 12+18)
Varies from 7.5' wide at 12+18 to 1 ft stub at 12+91

- LEGEND**
- Temporary Pavement
 - Pavement Removal
 - Traffic Lane
 - Barricades or drums with monodirectional steady burning light at 20 foot spacings
 - Type III barricade
 - Vertical barricades with monodirectional steady burning light at 20 foot spacings



• (136,137)W&RS-3;136R;1098R-2

FILE NAME = staging.dgn	USER NAME = hudelsonme	DESIGNED -	REVISED -
		DRAWN -	REVISED -
		CHECKED -	REVISED -
		DATE -	REVISED -

**STATE OF ILLINOIS
DEPARTMENT OF TRANSPORTATION**

SUGGESTED STAGES OF CONSTRUCTION - STAGE I			
SCALE:	SHEET NO.	OF SHEETS	STA. TO STA.

F.A.P. RTE.	SECTION	COUNTY	TOTAL SHEETS	SHEET NO.
665		HENDERSON		10
				CONTRACT NO. 88773
ILLINOIS FED. AID PROJECT				