

MARGARET ROTH, ET. AL.

FENCE REMOVAL = 2,673 FEET  
 (DUE TO THE SURVEY NOT BEING UP TO DATE, FENCE  
 REMOVAL WAS CALCULATED BY USING THE APPRAISAL RECORDS  
 FOR INDIVIDUAL PROPERTY OWNERS)

LT. STA. 42+92.1  
 EXISTING AGG. F.E. WITH HMA APRON,  
 HMA TO BE REMOVED, PAID AS  
 DRIVEWAY PAVEMENT REM.= 17 SQ. YD.  
 PIPE CULVERT REMOVAL (SPECIAL)= 26 FT.

LT. STA. 44+07 TO 50+17  
 GUTTER REMOVAL= 610 FEET  
 (REFER TO ARTICLE 440.03 OF THE  
 STANDARD SPECIFICATIONS)

LT. STA. 44+07 TO 50+17  
 BURIED GUTTER AND HMA OVERLAYS TO BE REMOVED, 2'-3" WIDE  
 PAID AS PAVEMENT REMOVAL (SPECIAL)= 181 SQ. YD.

PORTION OF EXIST. 9-6-9 PAV'T TO BE REMOVED, 1' WIDE  
 PAID AS PAVEMENT REMOVAL= 68 SQ. YD.  
 (SEE SPECIAL PROVISION)

RT. & LT. STA. 50+17 TO 78+66.19  
 EXISTING WIDENING & PORTION OF 9-6-9 PAVMENT TO BE REMOVED.  
 PAID AS PAVEMENT REMOVAL= 1899 SQ. YD.  
 (SEE SPECIAL PROVISION)

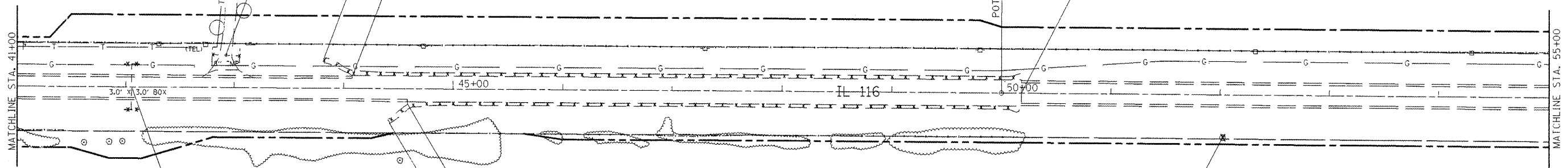
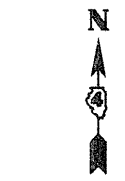
RT. STA. 52+00  
 TREE REMOVAL (OVER 15 UNITS DIAMETER)  
 =23.2 UNITS

RT. STA. 44+58 TO 50+17  
 PORTION OF EXIST. 9-6-9 PAV'T TO BE REMOVED, 1' WIDE  
 PAID AS PAVEMENT REMOVAL= 63 SQ. YD.  
 (SEE SPECIAL PROVISION)

RT. STA. 44+58 TO 50+17  
 BURIED GUTTER AND HMA OVERLAYS TO BE REMOVED, 2'-8" WIDE  
 PAID AS PAVEMENT REMOVAL (SPECIAL)= 166 SQ. YD.

RT. STA. 44+81 TO 50+17  
 GUTTER REMOVAL= 537 FEET  
 (REFER TO ARTICLE 440.03 OF THE  
 STANDARD SPECIFICATIONS)

STA. 42+05.2 (EXISTING CULVERT TO BE FILLED)  
 RT. SIDE CONCRETE HEADWALL REMOVAL= 2.56 CU. YD.  
 LT. SIDE CONCRETE HEADWALL REMOVAL= 2.0 CU. YD.



**LEGEND**

	PAVEMENT REMOVAL
	PAVEMENT BREAKING
	HMA SURFACE REMOVAL-BUTT JOINT

**PLAN NOTES**

- REMOVAL OF SAPLINGS, BUSHES AND ROOTS SHALL BE REMOVED AND DISPOSED OF AS REQUIRED BY ARTICLE 201
- SEE TREE REMOVAL TABLE FOR STATIONING AND QUANTITY
- REFER TO THE GENERAL NOTE AND/OR THE UNDERDRAIN, SPECIAL DETAIL IF ANY PIPE UNDERDRAINS OR FIELD TILE ARE ENCOUNTERED DURING CONSTRUCTION
- DUE TO THE POOR CONDITION OF THE EXISTING E.O.P ALONG BOTH SIDES OF IL ROUTE 116, QUANTITIES WERE INCLUDED FOR THE CONTRACTOR TO SAW CUT AND REMOVE PAVEMENT AT THE LOCATIONS AND WIDTHS SPECIFIED IN THE EXISTING TYPICALS. THIS WORK SHALL BE PAID FOR AS EITHER PAVEMENT REMOVAL AND/OR PAVEMENT REMOVAL, SPECIAL.

MIN. DEPTH	UTILITY	COMPANY
4'-0"	PETROLEUM	BUCKEYE PARTNERS, L.P.
40"	OIL	BP AMOCO
2'-6"	TELEPHONE	FRONTIER COMMUNICATIONS
2'-0"	CABLE T.V.	MEDIACOM COMMUNICATIONS
3'-0"	ELECTRIC	AMEREN IP
2'-6"	NATURAL GAS	NICOR
4'-0"	WATER	DALLAS RURAL WATER DIST.

FILE NAME = sht01.dgn	USER NAME = russellm	DESIGNED -	REVISED -
		DRAWN -	REVISED -
	PLOT SCALE = 100.0000' / 1" IN.	CHECKED -	REVISED -
	PLOT DATE = 1/28/2009	DATE -	REVISED -

STATE OF ILLINOIS  
 DEPARTMENT OF TRANSPORTATION

**EXISTING UTILITY INFORMATION AND REMOVAL ITEMS**

SCALE: 1"=50'	SHEET NO. OF SHEETS	STA. 41+00 TO STA. 55+00
---------------	---------------------	--------------------------

F.A.P. RTE.	SECTION	COUNTY	TOTAL SHEETS	SHEET NO.
665	(136,137)W&RS-3&136R109BR-2	HENDERSON		93
CONTRACT NO. 88773				
FED. ROAD DIST. NO. 4 ILLINOIS FED. AID PROJECT				