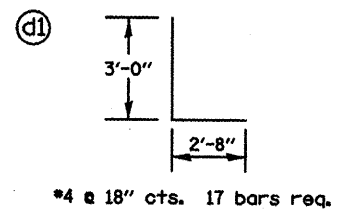
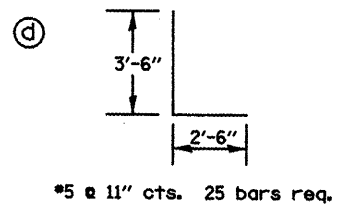
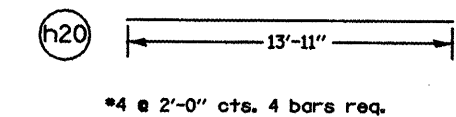
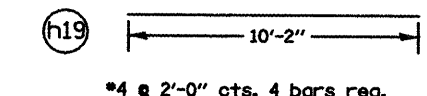
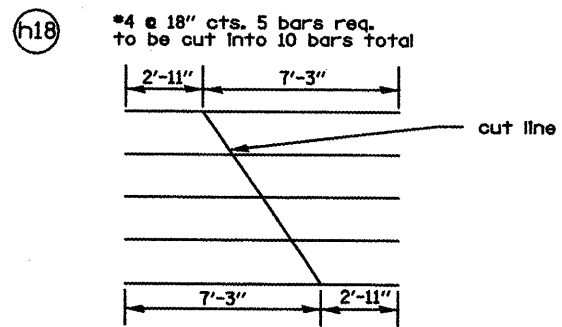
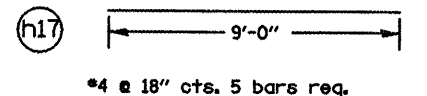
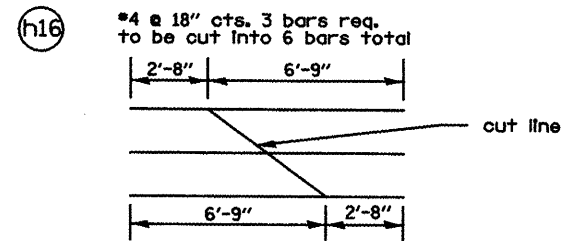


Bar	Length
h10	11'-9"
h11	14'-10"
h12	18'-0"
h13	21'-1 1/2"
h14	24'-3"
h15	26'-8"

h10-h14: 1 bar of each length is req.  
h15: 3 bars of stated length req.  
lengths given in this chart do not include extra length for lapping bars.



BILL OF MATERIAL					
BAR	SIZE	LENGTH	NORTH SIDE NO.	SOUTH SIDE NO.	SHAPE
a	6	8'-3"	10	10	U
a1	6	8'-0"	2	2	U
a2	6	6'-2"	2	2	U
a3	6	4'-5"	2	2	U
a4	6	2'-7"	2	2	U
x	4	5'-6"	40	40	L
x1	4	8'-4"	12	12	L
x2	4	10'-4"	12	12	L
x3	4	4'-8"	10	10	L
x4	6	15'-11"	2	2	L
x4a	6	19'-5"	2	2	L
x5	6	16'-8"	2	2	L
x5a	6	20'-1"	2	2	L
v	5	7'-9"	25	25	L
v1	5	3'-3"	25	25	L
v2*	5	12'-2"	11	11	L
v3*	5	12'-2"	14	14	L
v4*	5	14'-4"	4	4	L
v5*	5	14'-6"	5	5	L
h*	5	14'-0"	11	11	L
h1	5	6'-1"	1	1	L
h2	5	8'-0"	1	1	L
h3*	5	14'-0"	14	14	L
h4	5	6'-1"	1	1	L
h5	5	8'-0"	1	1	L
h6	5	5'-11"	9	9	L
h7	5	8'-1"	9	9	L
h8	4	10'-2"	8	8	L
h9	4	13'-11"	8	8	L
h10	4	11'-9"	1	1	L
h11	4	14'-10"	1	1	L
h12	4	18'-0"	1	1	L
h13	4	21'-1 1/2"	1	1	L
h14	4	24'-3"	1	1	L
h15	4	26'-8"	1	1	L
h16*	4	9'-5"	3	3	L
h17	4	9'-0"	5	5	L
h18*	4	10'-2"	5	5	L
h19	4	10'-2"	4	4	L
h20	4	13'-11"	4	4	L
d	5	6'-0"	25	25	L
d1	4	5'-8"	17	17	L
CONC. BOX CULV. YD			21.0	21.0	
REINFORCEMENT BARS LBS					4345
CONC. BOX CULV. YD					42.0

\*Refer to cut diagram for total amount of rebar required.

DRAWING NOT TO SCALE

FILE NAME = d-mindetail.dgn	USER NAME = ghidineam	DESIGNED -	REVISED -	STATE OF ILLINOIS DEPARTMENT OF TRANSPORTATION	STA. 124+22 6' X 8' BOX CULVERT EXTENSION DETAIL	F.A.P. RTE. 665	SECTION 036.137W&RS-3a136R109BR-1	COUNTY HENDERSON	TOTAL SHEETS 137	SHEET NO. 737		
PLOT SCALE = 100.0000' / IN.	CHECKED -	REVISED -	SCALE:			SHEET NO. OF SHEETS	STA. TO STA.	CONTRACT NO. 88773				
PLOT DATE = 1/28/2009	DATE -	REVISED -	FED. ROAD DIST. NO. ILLINOIS FED. AID PROJECT									