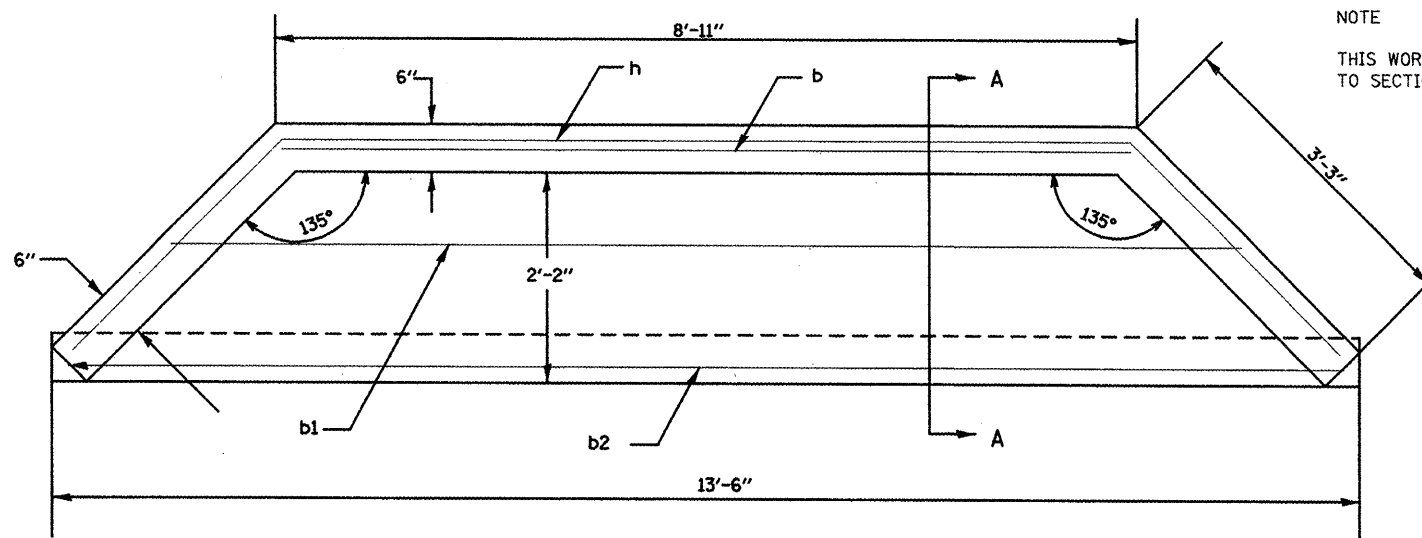
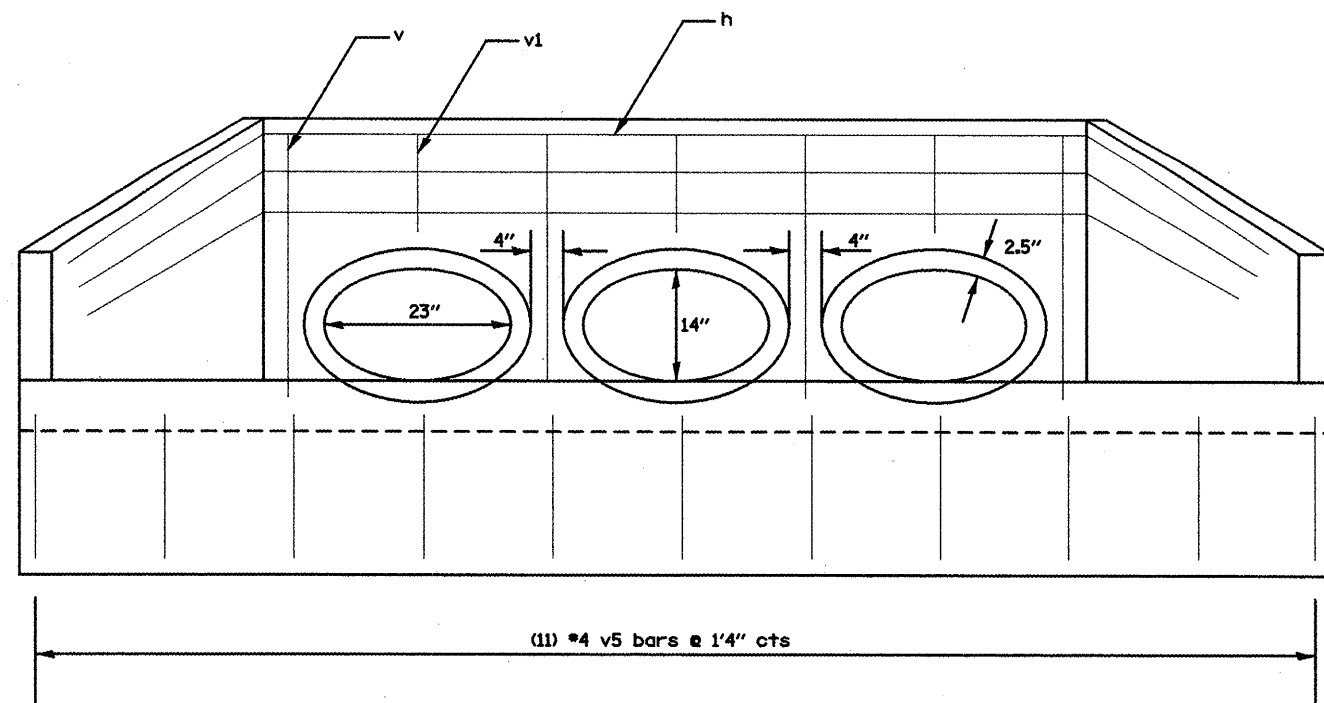


SECTION A-A

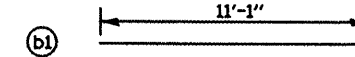
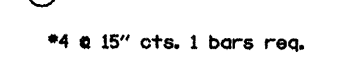
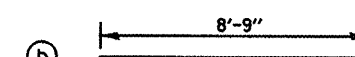
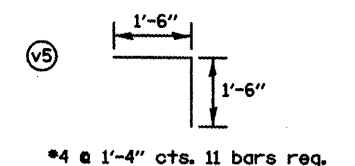
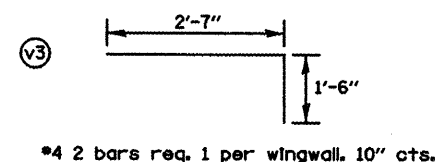
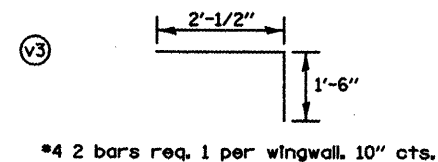
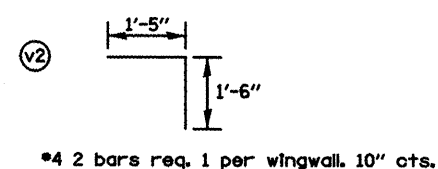
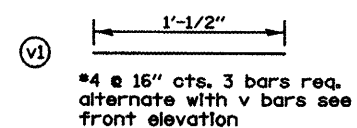
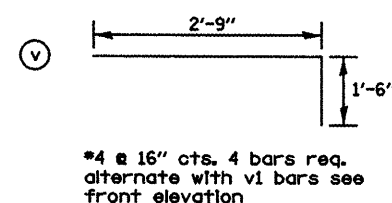
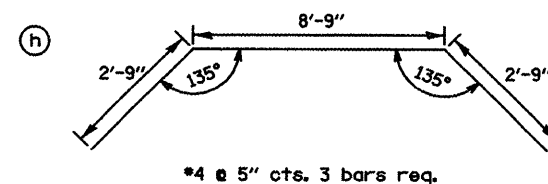


PLAN VIEW

NOTE  
THIS WORK SHALL BE PERFORMED ACCORDING  
TO SECTION 503 OF THE STANDARD SPECIFICATION.



FRONT ELEVATION



BILL OF MATERIAL					
BAR	SIZE	LENGTH	EAST SIDE NO.	WEST SIDE NO.	SHAPE
h	4	14'-3"	3	3	
v	4	4'-3"	4	4	
v1	4	1'-1/2"	3	3	
v2	4	2'-11"	2	2	
v3	4	3'-6 1/2"	2	2	
v4	4	4'-1"	2	2	
v5	4	3'-0"	11	11	
b	4	8'-9"	1	1	
b1	4	11'-1"	1	1	
b2	4	13'-2"	1	1	
CONC. HEADWALLS (CU YD)			1.4	1.4	
REINFORCEMENT BARS			LBS		200
CONC. HEADWALLS			YD <sup>3</sup>		2.8

DRAWING NOT TO SCALE

FILE NAME = dr-aindetail.dgn	USER NAME = ghdinaam	DESIGNED -	REVISED -
		DRAWN -	REVISED -
		CHECKED -	REVISED -
		DATE -	REVISED -

STATE OF ILLINOIS  
DEPARTMENT OF TRANSPORTATION

HEADWALL DETAIL FOR TRIPLE  
18" EQUIV. CULVERT STA. 221+68.46

F.A.P. RTE.	SECTION	COUNTY	TOTAL SHEETS	SHEET NO.
665	(136.137)W&RS-3d136r1098R-1	HENDERSON		140
FED. ROAD DIST. NO.			CONTRACT NO. 88773	
ILLINOIS FED. AID PROJECT				