

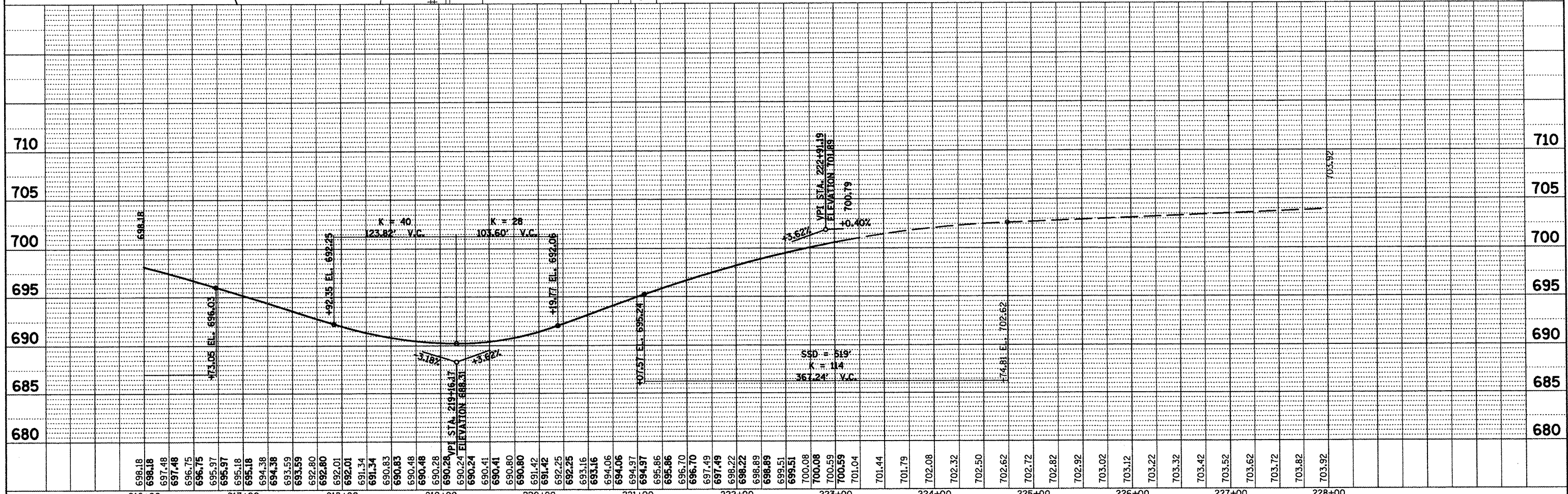
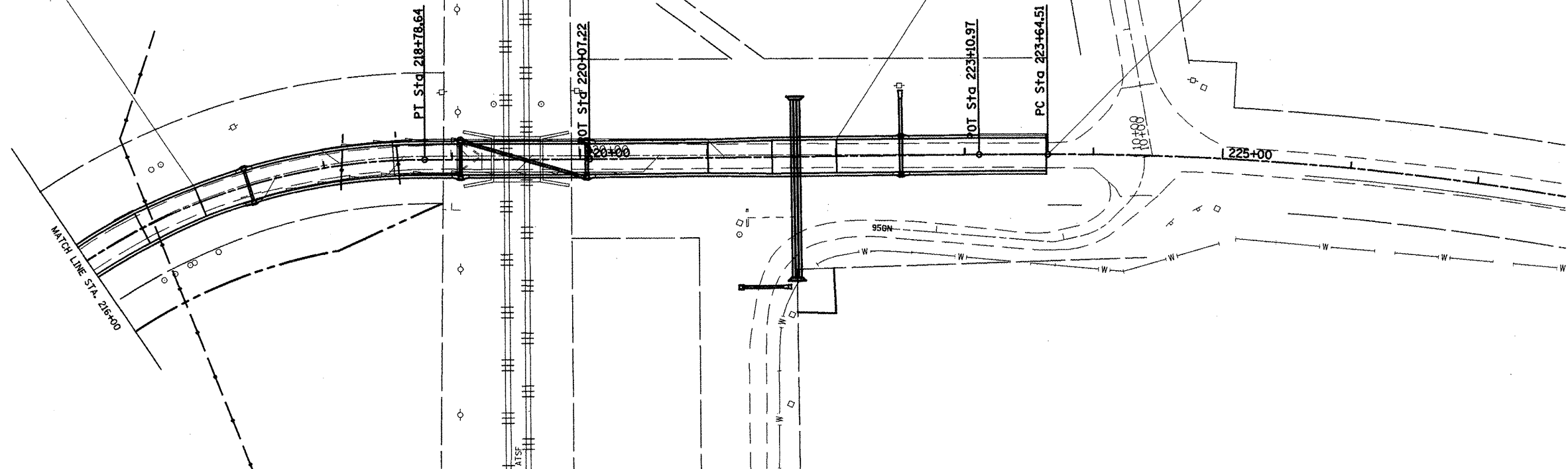
PLAN	DATE
BY	
DESIGNED	
CHECKED	
DATE	
NO.	

PROFILE	DATE
BY	
DESIGNED	
CHECKED	
DATE	
NO.	

STA. 217+00 TO STA. 222+00
 PCC BASE CSE, 7" = 1,333.3 SQ YD
 PAVEMENT FABRIC = 1,333.3 SQ. YD.
 SUB-BASE GRAN. MAT'L, TYP A, 12" = 213 SQ. YD.
 GEOTECH. FAB. FOR GRND. STAB. = 213 SQ. YD.

STA. 222+00 TO STA. 223+63.16
 PCC BASE CSE WIDENING 7" = 161.8 SQ YD
 SUB-BASE GRAN. MAT'L, TYP B, 12" = 269 SQ. YD.
 GEOTECH. FAB. FOR GRND. STAB. = 269 SQ YD

STA. 223+63.16
 END PROJECT LIMITS



FILE NAME = mscsheets.dgn	USER NAME = ghidnam	DESIGNED -	REVISED -	STATE OF ILLINOIS DEPARTMENT OF TRANSPORTATION	PROPOSED PLAN/PROFILE - IL 116	F.A.P. RTE.	SECTION	COUNTY	TOTAL SHEETS	SHEET NO.
PLOT SCALE = 1/8" = 100'	CHECKED -	REVISED -	REVISED -			CONTRACT NO. 88773				
PLOT DATE = 2/27/2009	DATE -	REVISED -	REVISED -			SCALE: SHEET NO. OF SHEETS STA. TO STA.				
						FED. ROAD DIST. NO.	ILLINOIS FED. AID PROJECT			