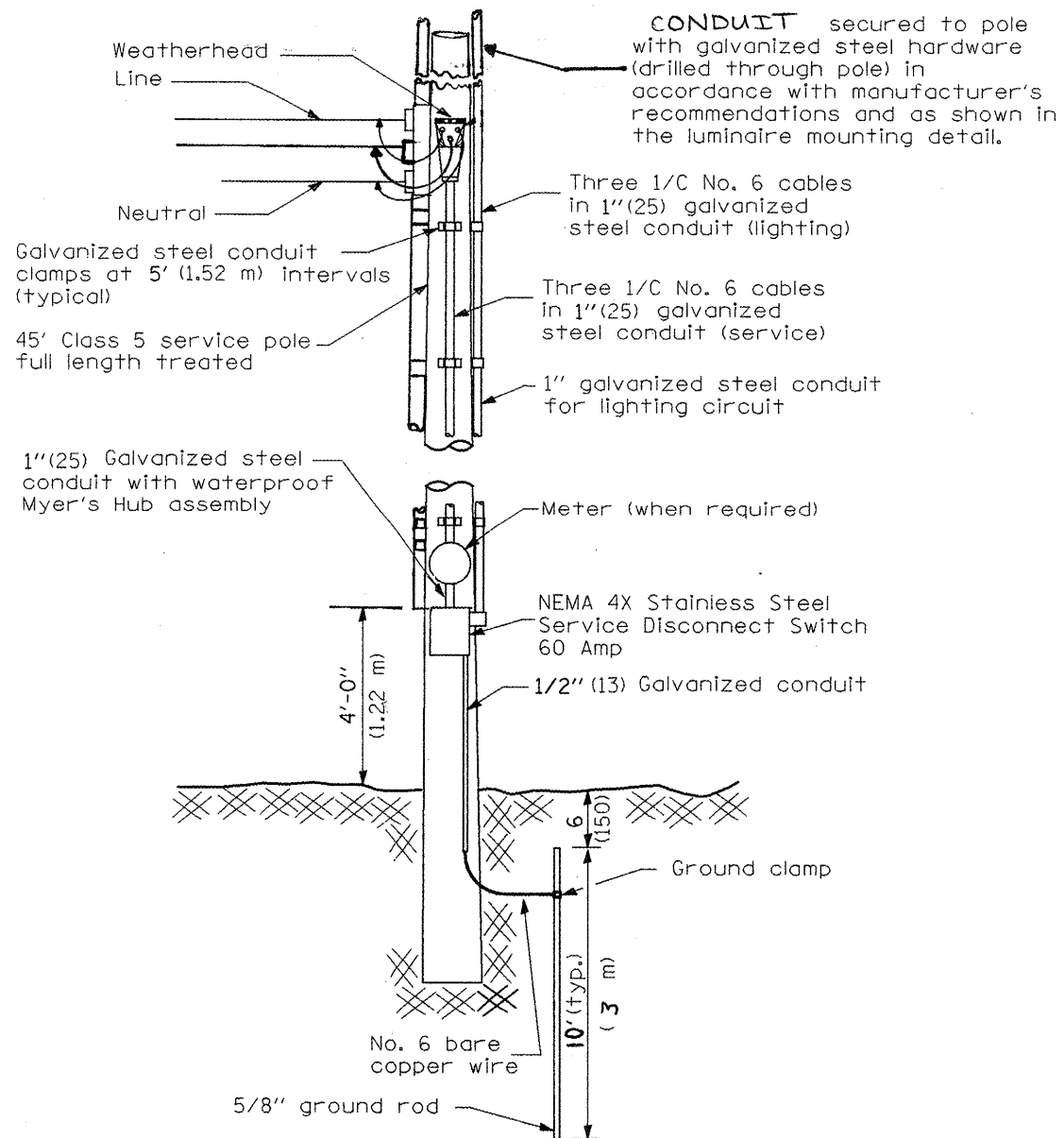


INSTALLATION NOTES

1. The wood pole shall be located outside of the clear zone. The Contractor shall obtain location verification from the Engineer prior to installation.
2. The Contractor shall provide a twin tenon bracket assembly, guy wires, and all other items required to complete the installation.
3. The twin tenon bracket shall be designed and manufactured for twin 45 kg (100 lb.) luminaires having an effective projected area each of 0.36 sq m (3.85 sq ft). Catalog cut sheets for the bracket shall be submitted to the Engineer as part of the data and product information submitted for approval.
4. The tenon shall extend 150 mm (6 in.) above the pole top and meet AASHTO loading requirements for the luminaires referenced above.

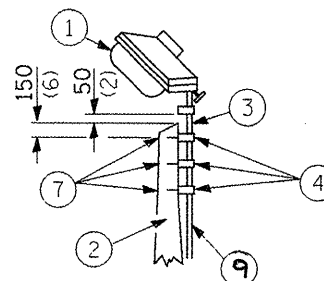
ELECTRICAL SERVICE INSTALLATION DETAIL



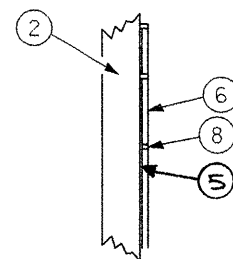
LUMINAIRE MOUNTING DETAIL

INSTALL 2 CONDUIT RISERS, ONE ON EACH SIDE OF POLE.
INSTALL 2 LUMINAIRES ON OPPOSING SIDES OF THE POLE (ONLY ONE SHOWN)

Luminaire(s) shall be oriented and the mounting angle adjusted as recommended by the Engineer.



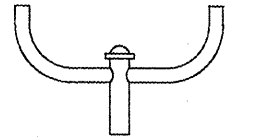
POLE LENGTH	DEPTH IN GROUND
13.7 m (45')	2.1 m (7')



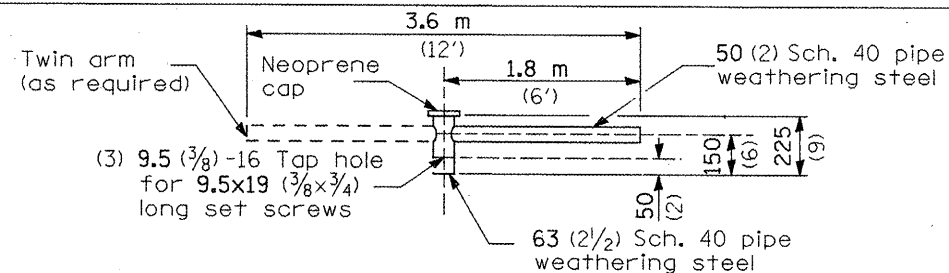
WOOD POLE

- ① Luminaire
- ② Wood pole, class 4 or better
- ③ 63 (2 1/2) Galv. steel conduit
- ④ Single offset pole band
- ⑤ Three 1/c #6 Type XLP-USE cable
- ⑥ 25 (1) Galv. steel conduit 3.0 m (10') in length
- ⑦ 16 (5/8) Ø hot dipped galvanized bolt WITH flat washer & locknut (3 req'd)
- ⑧ Conduit clamps on 900 (36) centers
- ⑨ CONDUIT REDUCER

TENON MOUNT DETAILS

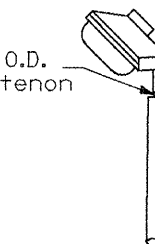


TWIN TENON



TENON MOUNT BRACKET ARM

NOTE: Single or twin arm assembly shall be tilted 3° above horizontal.



TENON

"Install and orient arm bracket over pole tenon and firmly hand tighten the two set screws. Use third hole in arm bracket as a guide to drill a 8.3 (21/64) diameter hole through tenon. Install and tighten self-tapping screw. Tighten set screws an additional (1/4 to 3/8) turn with hex key (not provided). Install locknuts on set screws if threaded projection allows."

FILE NAME = IL_94 Lighting.dgn	USER NAME = ghidneam	DESIGNED -	REVISED -
		DRAWN -	REVISED -
		CHECKED -	REVISED -
		DATE -	REVISED -

STATE OF ILLINOIS
DEPARTMENT OF TRANSPORTATION

INTERSECTION LIGHTING DETAIL

SCALE: SHEET NO. OF SHEETS STA. TO STA.

F.A.P. RTE. 665	SECTION 036.1371WARS-3a136r109BR-2	COUNTY HENDERSON	TOTAL SHEETS 212	SHEET NO. 212
CONTRACT NO. 88773			ILLINOIS FED. AID PROJECT	