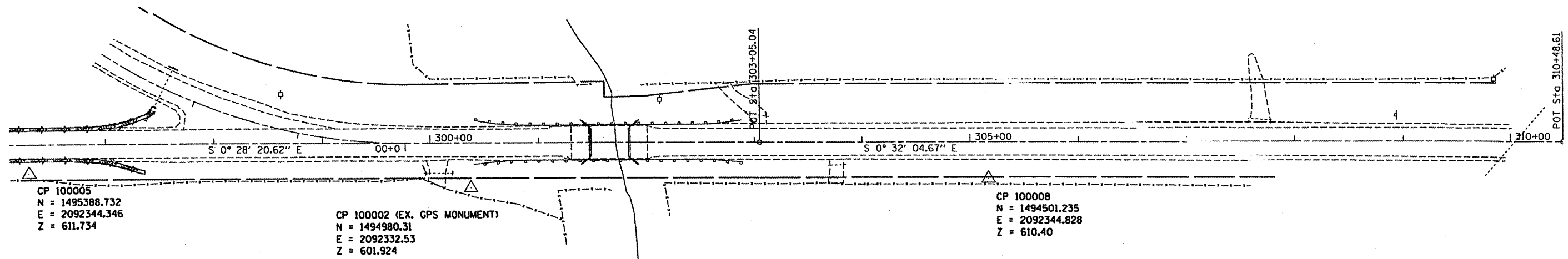




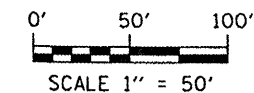
△ CP 100011
 N = 1495056.667
 E = 2092663.728
 Z = 601.86



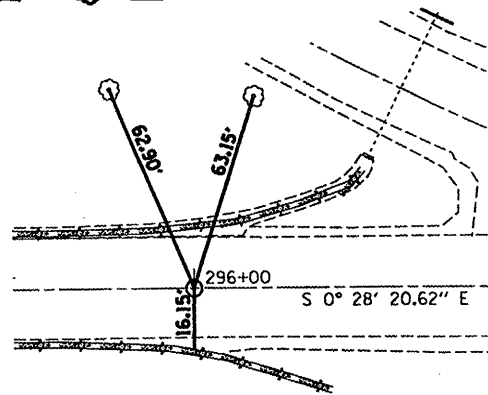
CP 100005
 N = 1495388.732
 E = 2092344.346
 Z = 611.734

CP 100002 (EX. GPS MONUMENT)
 N = 1494980.31
 E = 2092332.53
 Z = 601.924

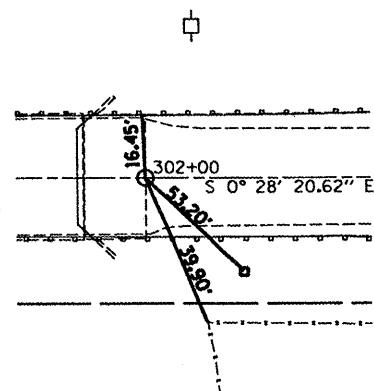
CP 100008
 N = 1494501.235
 E = 2092344.828
 Z = 610.40



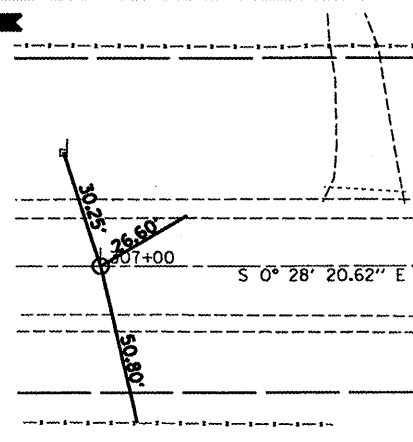
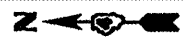
ALIGNMENT TIES



STA. 296+00.00



STA. 302+00.00



STA. 307+00.00

BENCHMARKS

B.M.(CB-1)- Railroad spike in powerpole at South entrance to rest area +/- 500' North of existing structure (036-0012) on East side of IL RT 94.

Elev. 609.424

B.M.(CB-2)- Chiseled "□" on NE corner of bridge approach deck of existing structure (036-0012).

Elev. 605.42

B.M.(CB-3)- Railroad spike in powerpole +/- 600' south of existing structure (036-0012) on East side of IL RT 94.

Elev. 619.28

FILE NAME = P:\858381\dgn\CADD SHEETS\0488773-shht-07-ATB.dgn
 USER NAME = jstein

DESIGNED - JWS
 DRAWN - JWS
 PLOT SCALE = 100.0000' / IN.
 CHECKED - SJK
 PLOT DATE = 1/21/2009

REVISIONS
 REVISION NO. DATE BY
 1 1/21/2009 SJK

STATE OF ILLINOIS
 DEPARTMENT OF TRANSPORTATION

ALIGNMENT, TIES AND BENCHMARKS
 SCALE: 1" = 50'
 SHEET NO. 1 OF 1 SHEETS
 STA. 296+00.00 TO STA. 309+80.00

F.A.P. RTE.	SECTION	COUNTY	TOTAL SHEETS	SHEET NO.
534	1136.137W&RS-3436R109BR-2	HENDERSON	490	1423

CONTRACT NO. 88773
 FED. ROAD DIST. NO. 7 ILLINOIS FED. AID PROJECT