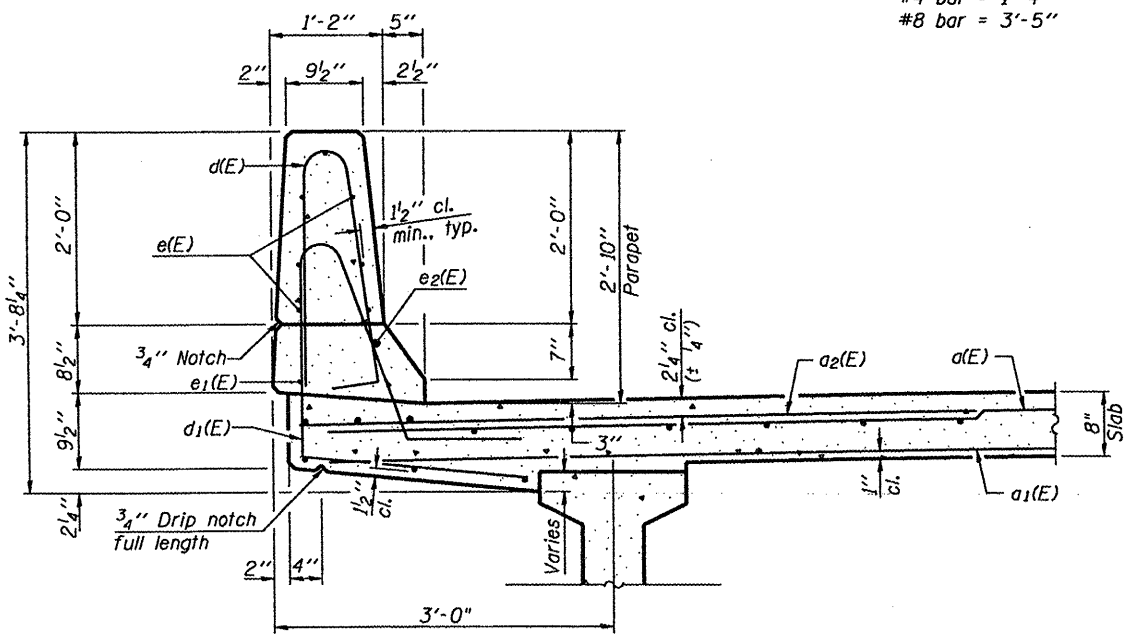
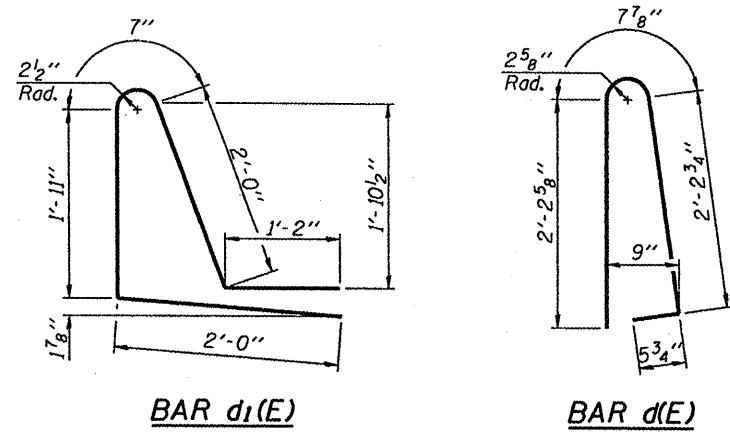


**INSIDE ELEVATION OF PARAPET**

**MINIMUM BAR LAP**  
 (Parapet)  
 #4 bar = 1'-4"  
 #8 bar = 3'-5"

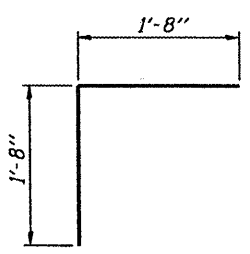


**SECTION THRU PARAPET**

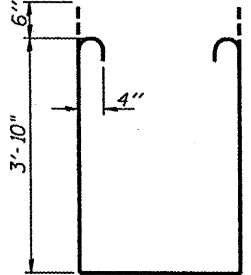


**BAR d1(E)**

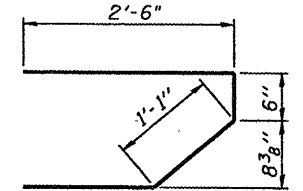
**BAR d(E)**



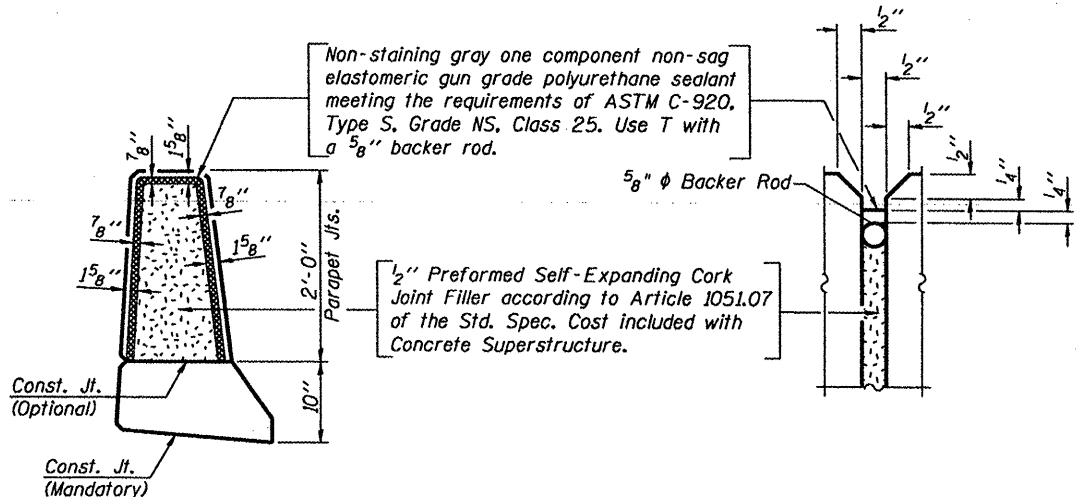
**BAR v(E)**



**BAR s1(E)**



**BAR s(E)**



**PARAPET JOINT DETAILS**

**SUPERSTRUCTURE BILL OF MATERIAL**

Bar	No.	Size	Length	Shape
a(E)	125	#5	34'-6"	—
a1(E)	94	#5	34'-2"	—
a2(E)	250	#6	6'-0"	—
a3(E)	4	#5	34'-10"	—
b(E)	152	#5	20'-8"	—
b1(E)	78	#5	27'-0"	—
d(E)	170	#5	5'-7"	⌋
d1(E)	170	#5	7'-8"	⌋
e(E)	56	#4	19'-2"	—
e1(E)	4	#4	39'-6"	—
e2(E)	4	#8	40'-7"	—
m(E)	4	#6	33'-1"	—
m1(E)	6	#6	34'-11"	—
m2(E)	24	#6	8'-2"	—
m3(E)	10	#6	3'-8"	—
m4(E)	4	#6	1'-9"	—
s(E)	72	#5	5'-7"	⌋
s1(E)	62	#4	10'-10"	⌋
v(E)	68	#5	3'-4"	⌋
Reinforcement Bars, Epoxy Coated		Lbs.	21,300	
Concrete Superstructure		Cu. Yds.	114.9	
Bar Splicers		Each	64	

Bars indicated thus 1 x 2-#4 etc. indicates 1 line of bars with 2 lengths per line.

DESIGNED	MJJ
CHECKED	ALN
DRAWN	MJJ
CHECKED	ALN

**THOUVENOT, WADE & MOERCHEN, INC.**  
 CORPORATE OFFICE  
 4940 Old Collinsville Road  
 Swansea, Illinois 62226  
 Tel: 618.624.4488  
 Fax: 618.624.6688  
 SWANSEA • WATERLOO • EDWARDSVILLE • CARBONDALE • ST. CHARLES



SHEET NO. 7	F.A.P. RTE. 534	SECTION 109BR-2	COUNTY HENDERSON	TOTAL SHEETS 490	SHEET NO. 434
SHEETS 17	FED. ROAD DIST. NO. 7 ILLINOIS		FED. AID PROJECT		

**SUPERSTRUCTURE DETAILS STRUCTURE NO. 036-0069**

CONTRACT NO. 88773

1/21/2009 10:01:49 AM