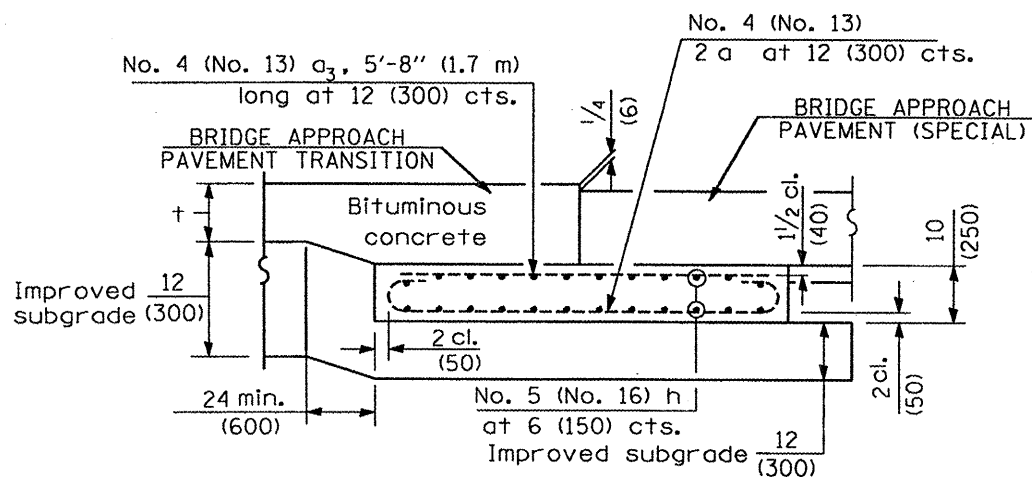
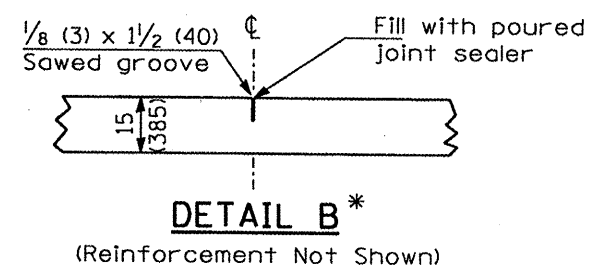


**PLAN**

\* Saw  $\phi$  or lane edge if poured two or more lane widths at a time.



**SECTION G-G - FLEXIBLE PAVEMENT**  
(Showing reinforcement)



**GENERAL NOTES**

THICKNESS-"t"=Thickness of Pavement.  
See Standard 421001 for reinforcement details not shown.  
See Standard 420001 for joint details not shown.  
All dimensions are in inches (millimeters) unless otherwise shown.  
See Bridge Approach Pavement Details, Sheet 3 of 4 for Section C-C, D-D, E-E, Longitudinal Joint, Design Stresses and Bar Details.  
See Sheet 4 of 4 for Parapet to Curb Transition Detail and Section H-H.

FILE NAME =	USER NAME = jstein	DESIGNED - JWS	REVISED -	<b>STATE OF ILLINOIS DEPARTMENT OF TRANSPORTATION</b>	<b>BRIDGE APPROACH PAVEMENT (SPECIAL) DETAILS</b>	F.A.P. RTE.	SECTION	COUNTY	TOTAL SHEETS	SHEET NO.	
Pr\050301\dgn\CA00 SHEETS\0486773-shr-33-details.approachslab.special.dgn		DRAWN - JWS	REVISED -			534	1136.1371WARS-3136R109BR-2	HENDERSON	490	419	
PLOT SCALE = 1/8" = 1'-0"		CHECKED - SJK	REVISED -			SCALE: 1" = 50'					
PLOT DATE = 1/21/2009		DATE - 1/21/2009	REVISED -			SHEET NO. 1 OF 1 SHEETS		STA. 296+00.00 TO STA. 309+80.00		CONTRACT NO. 86773	