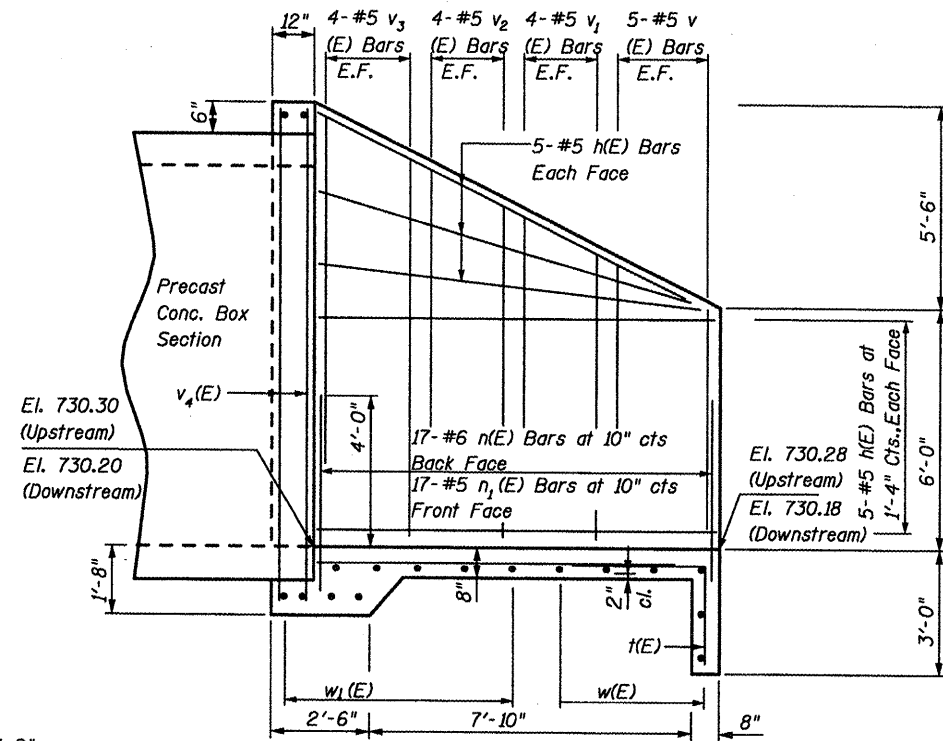


END ELEVATION



HALF SIDE ELEVATION

NOTES

Minimum Cover To Reinforcement 2".

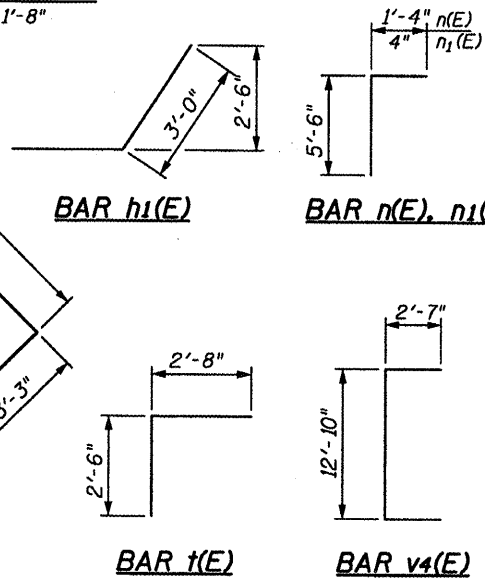
Exposed Edges Shall Be Beveled 3/4".

Reinforcement Bars designated (E) shall be epoxy coated.

Reinforcement Bars Shall Conform To The Requirements of ASTM A706 Grade 60. See Special Provisions.

As the depth of the fill at the edge of shoulder is less than 2 feet, the entire Precast Concrete Box Culvert shall conform to the requirements of AASHTO M273.

MIN. BAR LAP
#5 Bar = 1'-8"

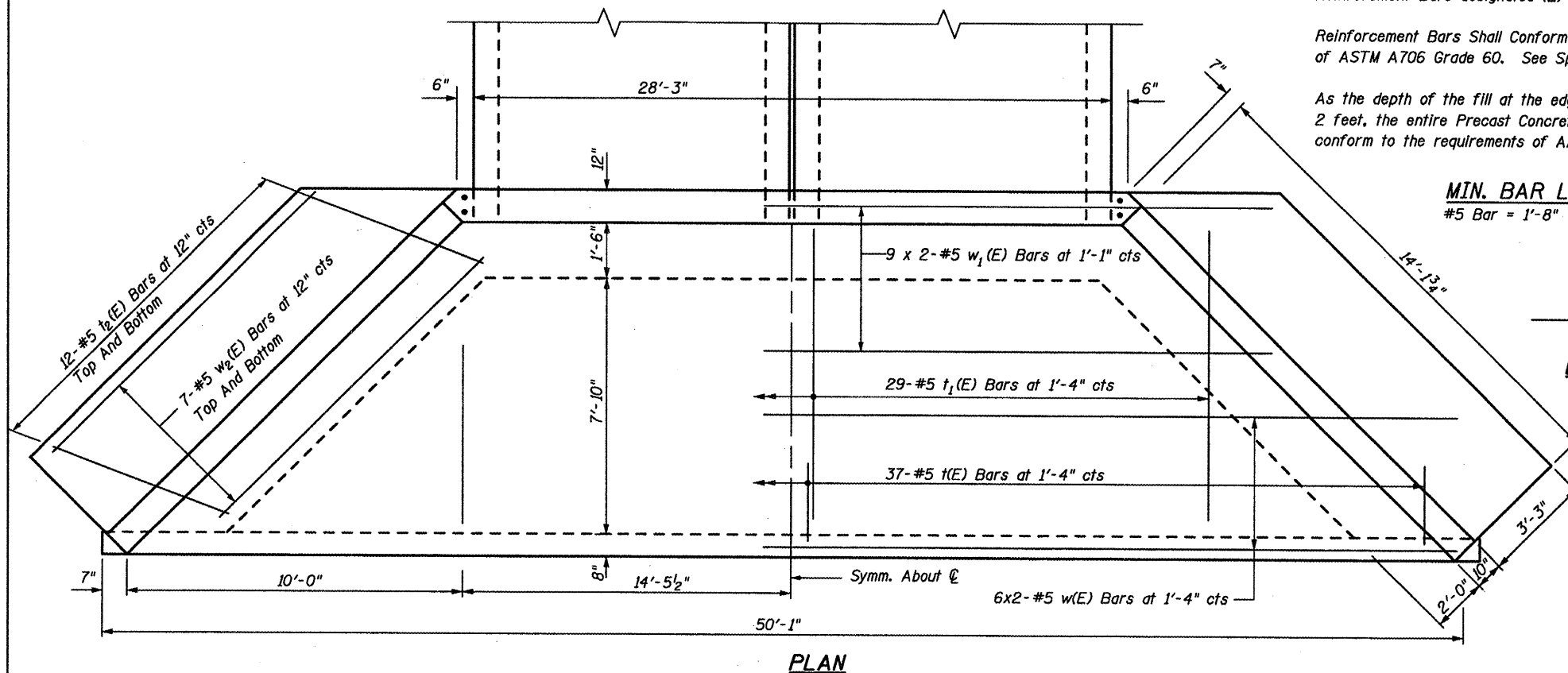


BILL OF MATERIAL

(For Two End Sections)

Bar	No.	Size	Length	Shape
h(E)	80	#5	13'-10"	—
h1(E)	8	#6	6'-0"	—
h2(E)	8	#6	15'-4"	—
n(E)	68	#6	6'-10"	┌
n1(E)	68	#5	5'-10"	┌
t(E)	74	#5	5'-2"	┌
t1(E)	58	#5	8'-8"	—
t2(E)	96	#5	6'-3"	—
v(E)	40	#5	5'-8"	—
v1(E)	32	#5	6'-4"	—
v2(E)	32	#5	7'-8"	—
v3(E)	32	#5	9'-0"	—
v4(E)	8	#6	18'-0"	┌
w(E)	24	#5	25'-8"	—
w1(E)	36	#5	19'-9"	—
w2(E)	56	#5	11'-1"	—
Concrete Headwalls			Cu. Yd.	64
Reinforcement Bars, Epoxy Coated			Pound	7320

Bars indicated thus 6 x 2-#5 etc. indicates 6 lines of bars with 2 lengths per line.



PLAN

FILE NAME = ...D488773-sht-culvert.dgn
 THE UPCHURCH GROUP, INC.

USER NAME = _USER.	DESIGNED -	REVISED -
PLOT SCALE = \$SCALE\$	DRAWN -	REVISED -
PLOT DATE = 2/19/2009 2:08:49 PM	CHECKED -	REVISED -
	DATE -	REVISED -

STATE OF ILLINOIS
 DEPARTMENT OF TRANSPORTATION

CULVERT END SECTION DETAILS
 COUNTY ROAD 8 (1900 E) OVER BRANCH OF HONEY CREEK

SCALE: SHEET NO. OF SHEETS STA. TO STA.

F.A.P. RTE.	SECTION	COUNTY	TOTAL SHEETS	SHEET NO.
665	1136,137W&R5-3:136R109BR-2	Henderson	490	476
FED. ROAD DIST. NO. 4 ILLINOIS FED. AID PROJECT			CONTRACT NO. 88773	