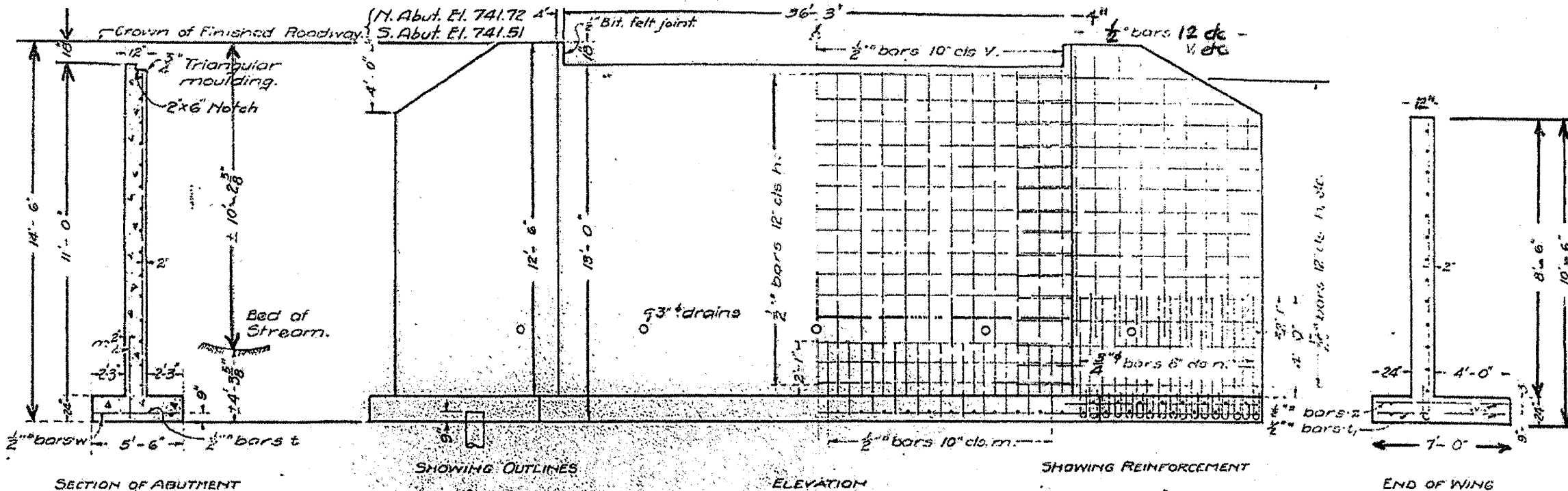


Existing Structure - Slab bridge 18' span
 20' roadway to be removed by contractor
 B.M. #27 - S. & W. Vert. in 24" Elm
 Lt. Sta. 410+42 Elev. 754.48

STATE OF ILLINOIS
 DEPARTMENT OF PUBLIC WORKS & BUILDINGS
 DIVISION OF HIGHWAYS
R.C. ABUTMENTS FOR SLAB BRIDGE
 HEIGHT OVER ALL 14 FEET 6 INCHES

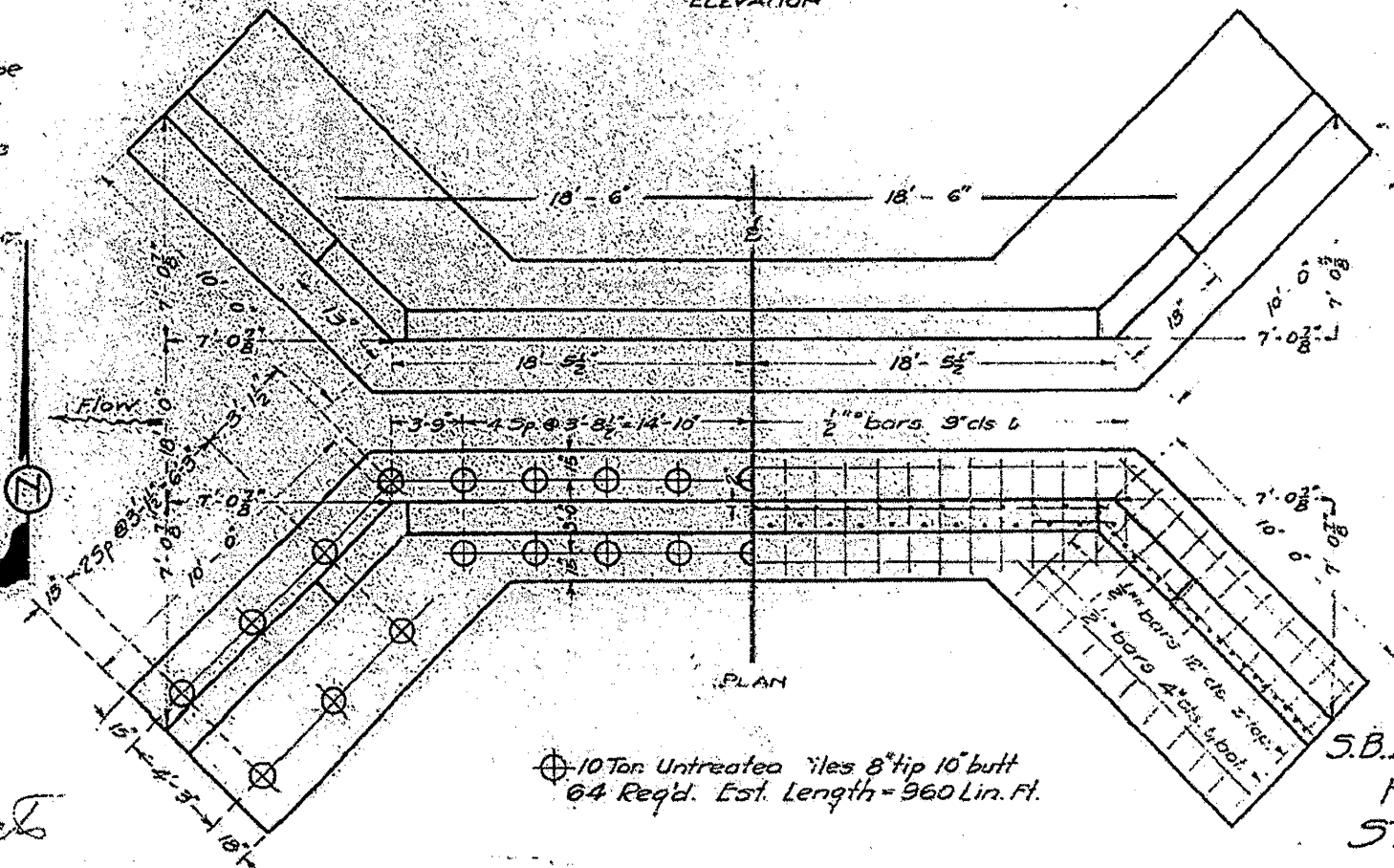
BOND ISSUE ROUTE NO.	COUNTY	SEC.	TOTAL SHEETS	SHEET NO.
97 A	Henderson	135	31	28



Class X Concrete shall be used in Footings.
 Proportions 1-2-3 1/2
 Class A concrete shall be used above top of footings.
 Proportions 1-2-4
 All reinforcing steel shall be securely wired in place before concrete is poured.

BILL OF MATERIAL

Bars	No	Size	Length
V	90	1/2"	10'-9"
V	12	1/2"	10'-0"
V	12	1/2"	8'-6"
V	16	1/2"	7'-0"
H	44	1/2"	19'-6"
H	36	1/2"	11'-6"
H	8	1/2"	7'-6"
T	80	3/4"	
L	100	1/2"	5'-3"
L	136	1/2"	6'-3"
L	40	1/2"	6'-9"
V	8	1/2"	19'-6"
V	16	1/2"	10'-6"
V	90	1/2"	3'-0"
Concrete Cl. A - Cu. Yds. 43.3			
Reinforcing Steel - Lbs. 5040			
Concrete Cl. X - Cu. Yds. 49.8			



COMPUTED	H.P. Duffell
CHECKED	L.D. Looney
DRAWN	J.H. Bunch
CHECKED	H.P.D.
ASSEMBLED	I.B. Kirkwood
CHECKED	F.R. Anderson

EXAMINED **W.C. 5-28**
J.F. Bunch
 ENGINEER
Frank Chiles
 CHIEF HIGHWAY ENGINEER

S.B.I. ROUTE 97A SEC. 135
 HENDERSON COUNTY
 STATION 413+70
 980