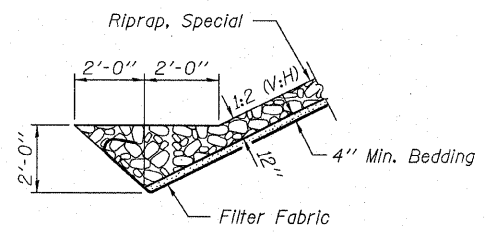
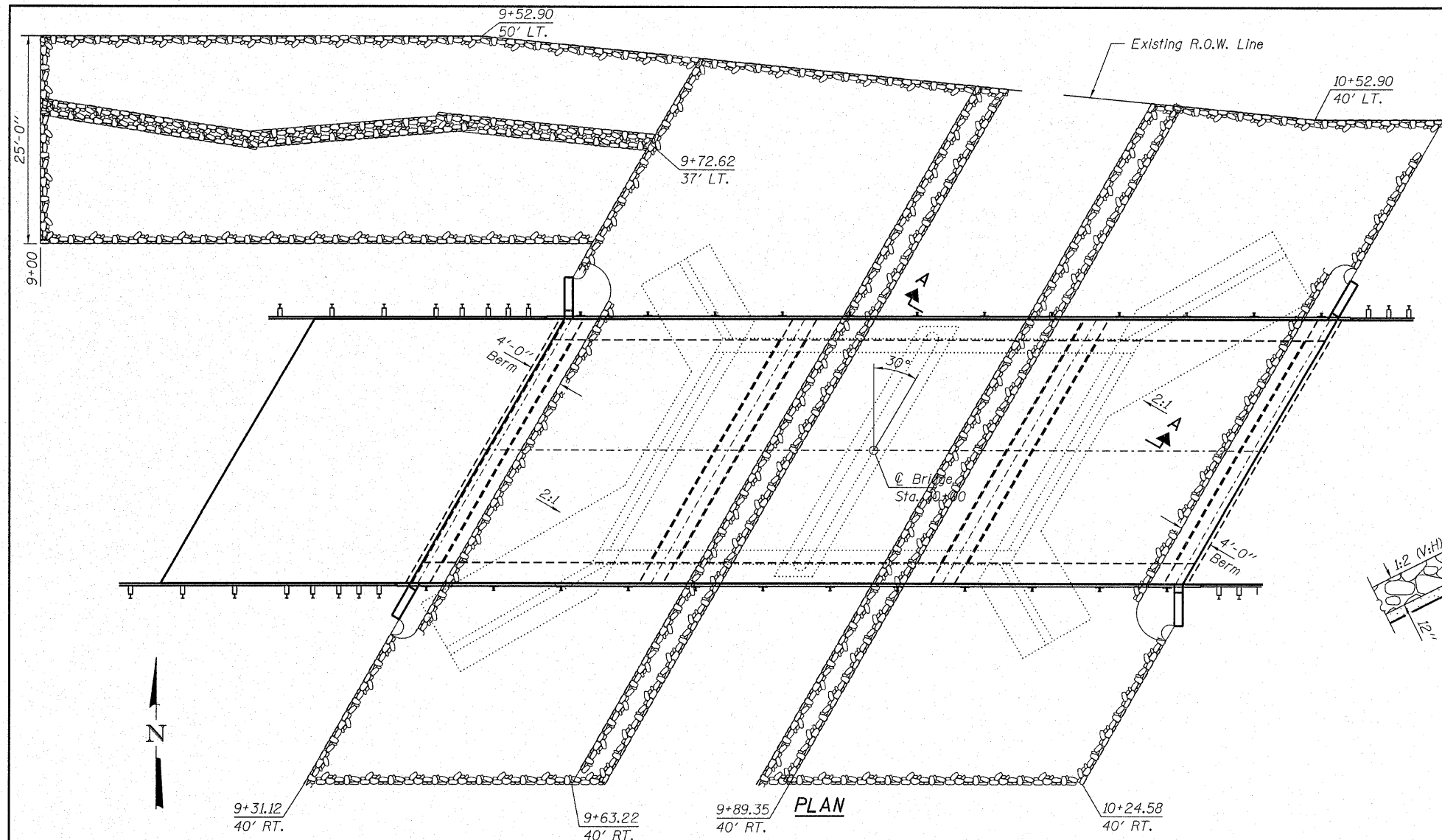
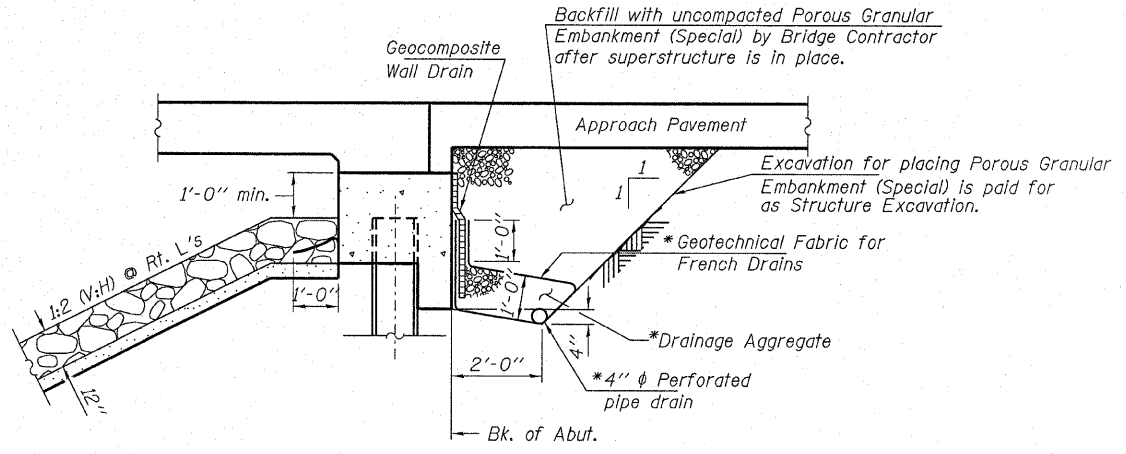


ROUTE NO.	SECTION	COUNTY	TOTAL SHEETS	SHEET NO.
C.H. 36	07-00045-03-BR	McLEAN	27	14
FED. ROAD DIST. NO.		ILLINOIS	CONTRACT NO. 91388	

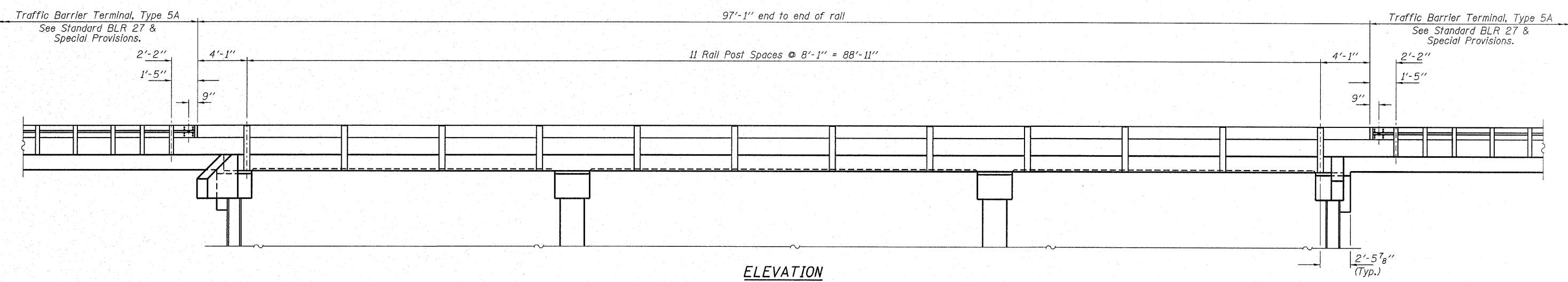


**SECTION A-A**  
Note: See Special Provisions for Riprap, Special.



**SECTION THRU INTEGRAL ABUTMENT**  
(Horiz. dim. @ Rt. L's)

\* Included in the cost of Pipe Underdrains for Structures.  
Note:  
All drainage system components shall extend to 2'-0" from the end of each wingwall except an outlet pipe shall extend until intersecting with the side slopes. The pipes shall drain into concrete headwalls. (See Article 601.05 of the Standard Specifications and Highway Standard 601101).



**ELEVATION**  
Showing Rail Post Spaces  
See sheet 20 for Railing Details.

<p><b>HAMPTON, LENZINI &amp; RENWICK, INC.</b> CIVIL &amp; STRUCTURAL ENGINEERS LAND SURVEYORS</p> <p>3085 STEVENSON DRIVE, SUITE 201 SPRINGFIELD, ILLINOIS 62703 (217) 546-3400</p>		<p><b>GENERAL DETAILS</b> C.H. 36 / F.A.S. 487 SECTION 07-00045-03-BR McLEAN COUNTY STRUCTURE NO. 057-3211 / STATION 10+00</p>
<p>ELGIN • SPRINGFIELD</p>	<p>PROJECT NUMBER: 12-59-0055-1 DATE: 01/22/09 DESIGNED: P.S.L. CHECKED: S.W.M. DRAWN: D.A.B.</p>	