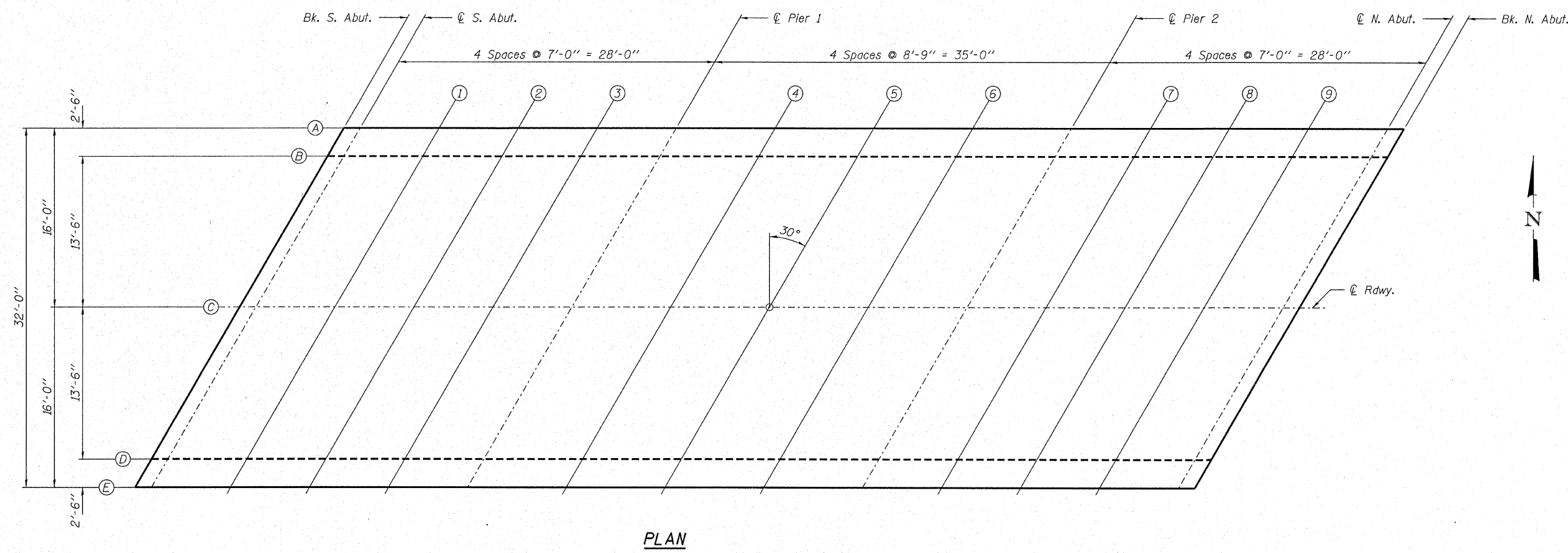


ROUTE NO. C.H. 36	SECTION 07-00045 -03-BR	COUNTY McLEAN	TOTAL SHEETS 27	SHEET NO. 15
FED. ROAD DIST. NO.		ILLINOIS CONTRACT NO. 91388		



PLAN

TABLE OF ELEVATIONS

LOCATION	BK. OF S. ABUT.	C. OF S. ABUT.	SPAN 1			C. OF PIER 1	SPAN 2			C. OF PIER 2	SPAN 3			C. OF N. ABUT.	BK. OF N. ABUT.
			1	2	3		4	5	6		7	8	9		
LINE T.	821.680	821.680	821.680	821.680	821.680	821.680	821.680	821.680	821.680	821.680	821.680	821.680	821.680	821.680	
A ADJ.	821.680	821.680	821.688	821.689	821.685	821.680	821.687	821.687	821.687	821.680	821.685	821.689	821.688	821.680	
** Bott. of Slab	820.343	820.343	820.351	820.353	820.348	820.343	820.350	820.356	820.350	820.343	820.348	820.353	820.351	820.343	

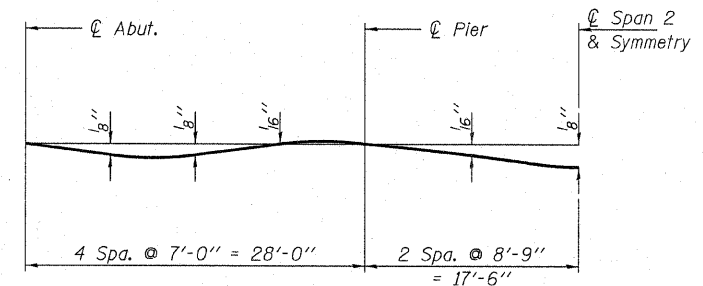
LOCATION	BK. OF S. ABUT.	C. OF S. ABUT.	SPAN 1			C. OF PIER 1	SPAN 2			C. OF PIER 2	SPAN 3			C. OF N. ABUT.	BK. OF N. ABUT.
			1	2	3		4	5	6		7	8	9		
LINE T.	821.730	821.730	821.730	821.730	821.730	821.730	821.730	821.730	821.730	821.730	821.730	821.730	821.730	821.730	
B ADJ.	821.730	821.730	821.738	821.739	821.735	821.730	821.737	821.743	821.737	821.730	821.735	821.739	821.738	821.730	
** Bott. of Slab	820.563	820.563	820.571	820.573	820.568	820.563	820.570	820.576	820.570	820.563	820.568	820.573	820.571	820.563	

LOCATION	BK. OF S. ABUT.	C. OF S. ABUT.	SPAN 1			C. OF PIER 1	SPAN 2			C. OF PIER 2	SPAN 3			C. OF N. ABUT.	BK. OF N. ABUT.
			1	2	3		4	5	6		7	8	9		
LINE T.	822.000	822.000	822.000	822.000	822.000	822.000	822.000	822.000	822.000	822.000	822.000	822.000	822.000	822.000	
C ADJ.	822.000	822.000	822.008	822.009	822.005	822.000	822.007	822.013	822.007	822.000	822.005	822.009	822.008	822.000	
** Bott. of Slab	820.833	820.833	820.841	820.843	820.838	820.833	820.840	820.846	820.840	820.833	820.838	820.843	820.841	820.833	

LOCATION	BK. OF S. ABUT.	C. OF S. ABUT.	SPAN 1			C. OF PIER 1	SPAN 2			C. OF PIER 2	SPAN 3			C. OF N. ABUT.	BK. OF N. ABUT.
			1	2	3		4	5	6		7	8	9		
LINE T.	821.730	821.730	821.730	821.730	821.730	821.730	821.730	821.730	821.730	821.730	821.730	821.730	821.730	821.730	
B ADJ.	821.730	821.730	821.738	821.739	821.735	821.730	821.737	821.743	821.737	821.730	821.735	821.739	821.738	821.730	
** Bott. of Slab	820.563	820.563	820.571	820.573	820.568	820.563	820.570	820.576	820.570	820.563	820.568	820.573	820.571	820.563	

LOCATION	BK. OF S. ABUT.	C. OF S. ABUT.	SPAN 1			C. OF PIER 1	SPAN 2			C. OF PIER 2	SPAN 3			C. OF N. ABUT.	BK. OF N. ABUT.
			1	2	3		4	5	6		7	8	9		
LINE T.	821.680	821.680	821.680	821.680	821.680	821.680	821.680	821.680	821.680	821.680	821.680	821.680	821.680	821.680	
A ADJ.	821.680	821.680	821.688	821.689	821.685	821.680	821.687	821.693	821.687	821.680	821.685	821.689	821.688	821.680	
** Bott. of Slab	820.343	820.343	820.351	820.353	820.348	820.343	820.350	820.356	820.350	820.343	820.348	820.353	820.351	820.343	

T. - Theoretical elevation at top of slab
 Adj. - T adjusted for dead load deflection
 ** Bottom of slab elevation equals bottom of edge beam.



DEAD LOAD DEFLECTION DIAGRAM
 (Includes weight of concrete only.)

Notes: The above deflections are not to be used in the field if the engineer is working from the grade elevations adjusted for dead load deflections as shown.

The Contractor shall make allowance for the deflection of forms, shrinkage and settlement of falsework in addition to allowance for dead load deflection.

HAMPTON, LENZINI & RENWICK, INC.
 CIVIL & STRUCTURAL ENGINEERS
 LAND SURVEYORS

HLR

3085 STEVENSON DRIVE, SUITE 201
 SPRINGFIELD, ILLINOIS 62703
 (217) 546-3400

ELGIN • SPRINGFIELD

PROJECT NUMBER: 12-59-0055-1 DATE: 01/22/09
 DESIGNED: P.S.L. CHECKED: S.W.M. DRAWN: D.A.B.

TOP OF SLAB ELEVATIONS

C.H. 36 / F.A.S. 487

SECTION 07-00045-03-BR

McLEAN COUNTY

STRUCTURE NO. 057-3211 / STATION 10+00