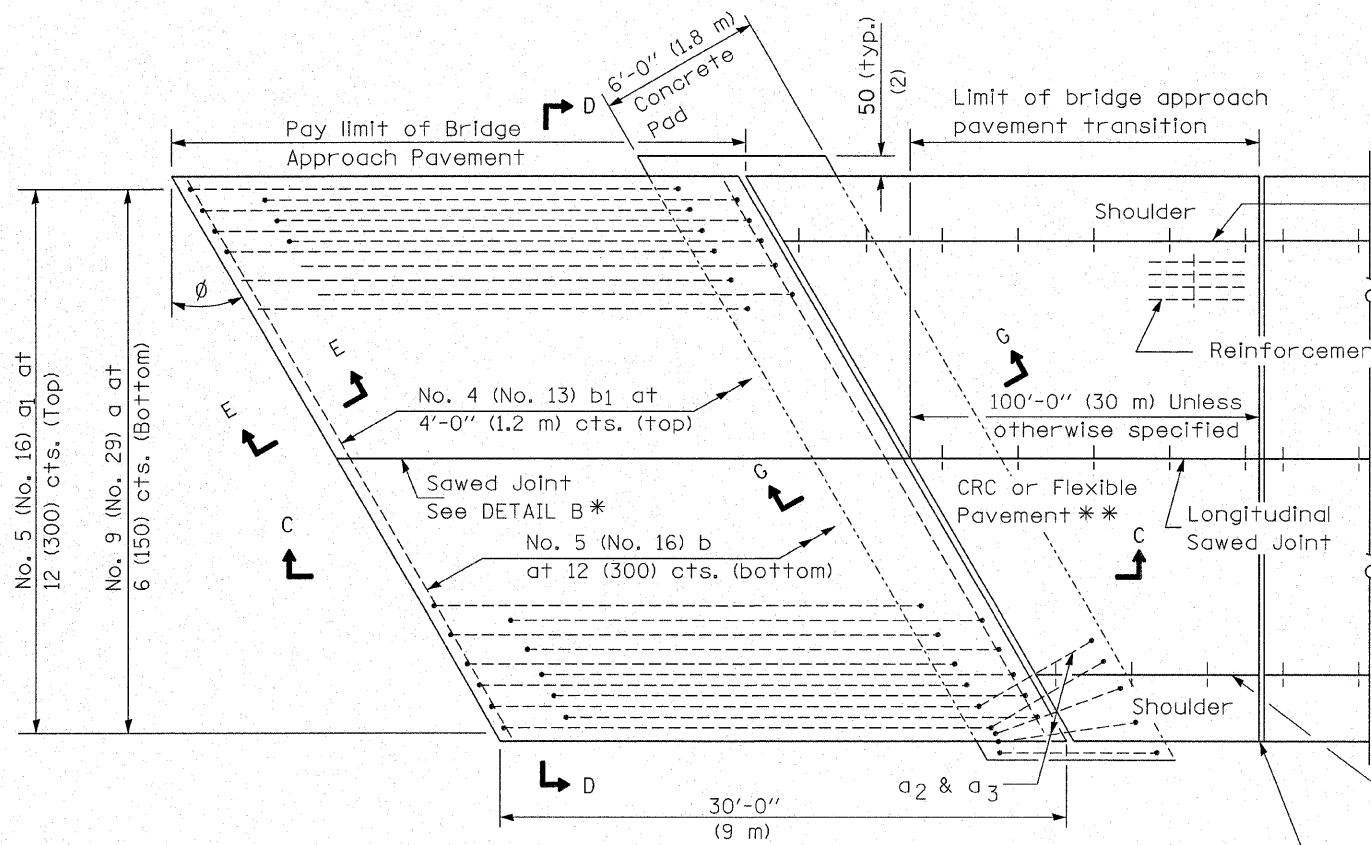
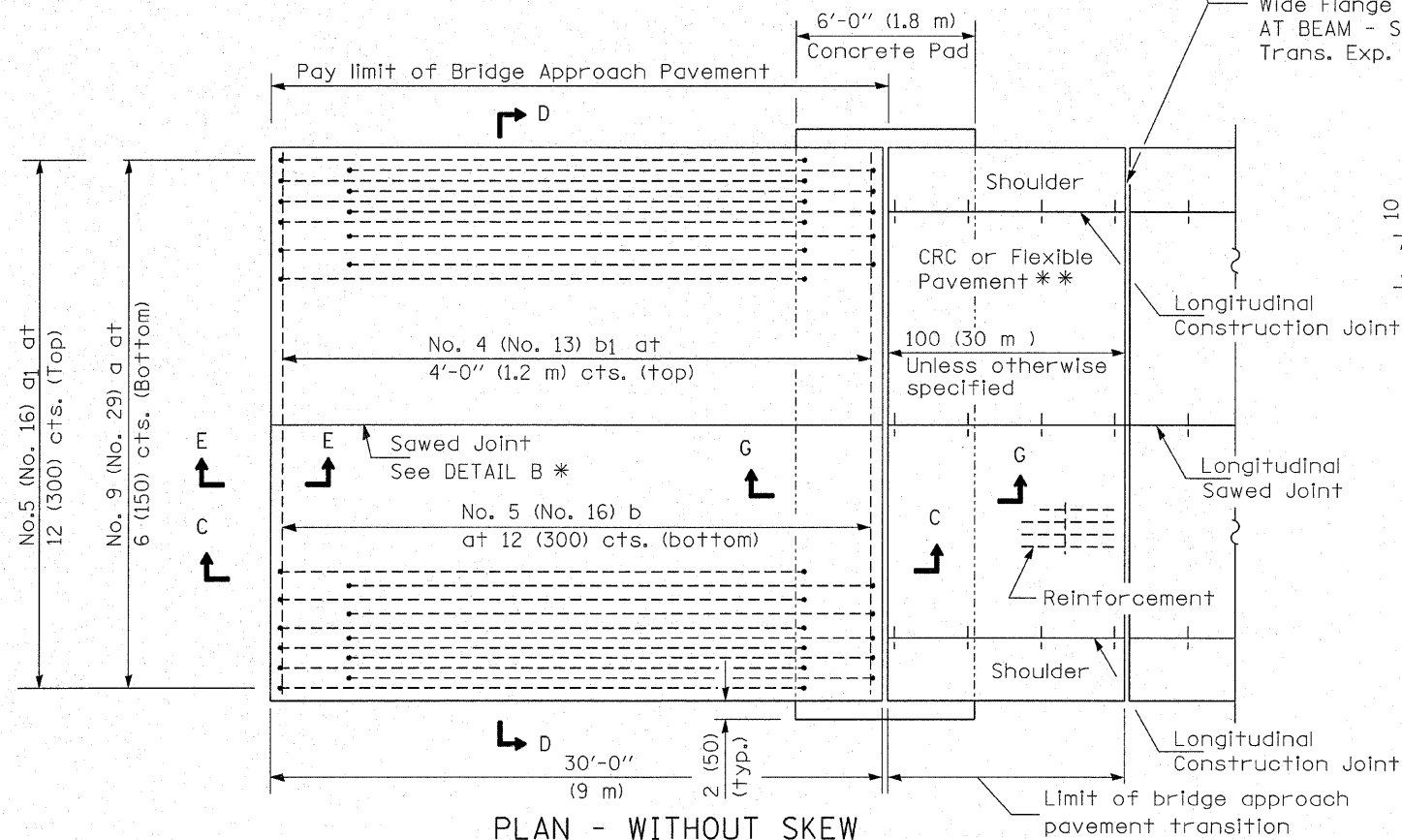


ROUTE NO.	SECTION	COUNTY	TOTAL SHEETS	SHEET NO.
C.H. 36	07-00045-03-BR	McLEAN	27	24
FED. ROAD DIST. NO.		ILLINOIS CONTRACT NO. 91388		

NEW CONSTRUCTION

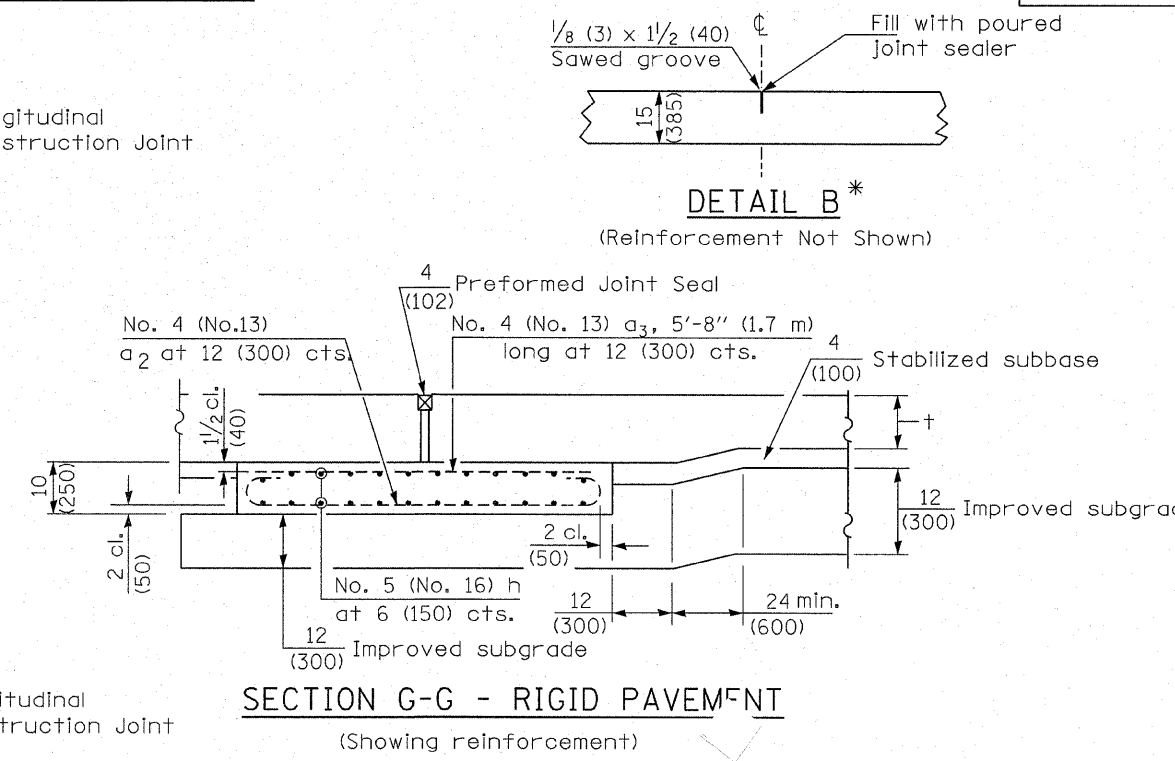


PLAN - WITH SKEW



PLAN - WITHOUT SKEW

* Saw \perp or lane edge if poured two or more lane widths at a time.
 ** Omit Reinforcement, tie bars and Long. sawed Jt. for Flexible Pavement.



SECTION G-G - RIGID PAVEMENT
(Showing reinforcement)

SECTION G-G - FLEXIBLE PAVEMENT
(Showing reinforcement)

Rigid Pavement only:
 Wide Flange Beam Terminal Joint (See DETAIL AT BEAM - Standard 421101 or 421106) or 2 (50)
 Trans. Exp. Joint as detailed on Standard 420001.

GENERAL NOTES

THICKNESS-"t"=Thickness of Pavement.
 See Standard 421001 for reinforcement details not shown.
 See Standard 420001 for joint details not shown.
 All dimensions are in inches (millimeters) unless otherwise shown.

(Sheet 1 of 4)

<p>HAMPTON, LENZINI & RENWICK, INC. CIVIL & STRUCTURAL ENGINEERS LAND SURVEYORS</p> <p>HLR</p> <p>3085 STEVENSON DRIVE, SUITE 201 SPRINGFIELD, ILLINOIS 62703 (217) 546-3400</p> <p>ELGIN • SPRINGFIELD</p>	<p>BRIDGE APPROACH PAVEMENT DETAIL</p> <p>C.H. 36 / F.A.S. 487</p> <p>SECTION 07-00045-03-BR</p> <p>McLEAN COUNTY</p> <p>STRUCTURE NO. 057-3211 / STATION 10+00</p>
	<p>PROJECT NUMBER: 12-59-0055-1 DATE: 01/22/09</p> <p>DESIGNED: P.S.L. CHECKED: S.W.M. DRAWN: D.A.B.</p>