

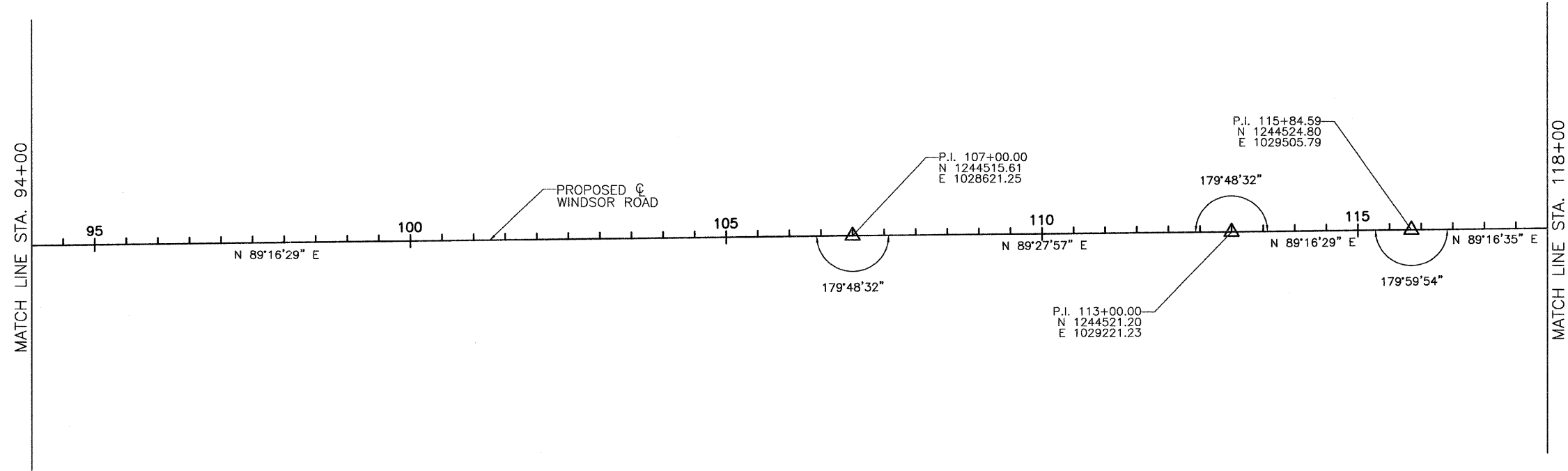
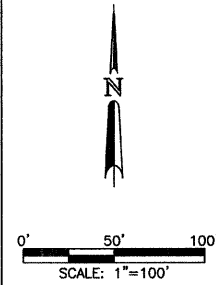


CITY OF URBANA
PUBLIC WORKS
ENGINEERING DIVISION

DATED: 1/09
DRAWN BY: JSC
DESIGNED BY: CES
CHECKED BY: GLJ
CITY SECTION
00-00361-00-PV

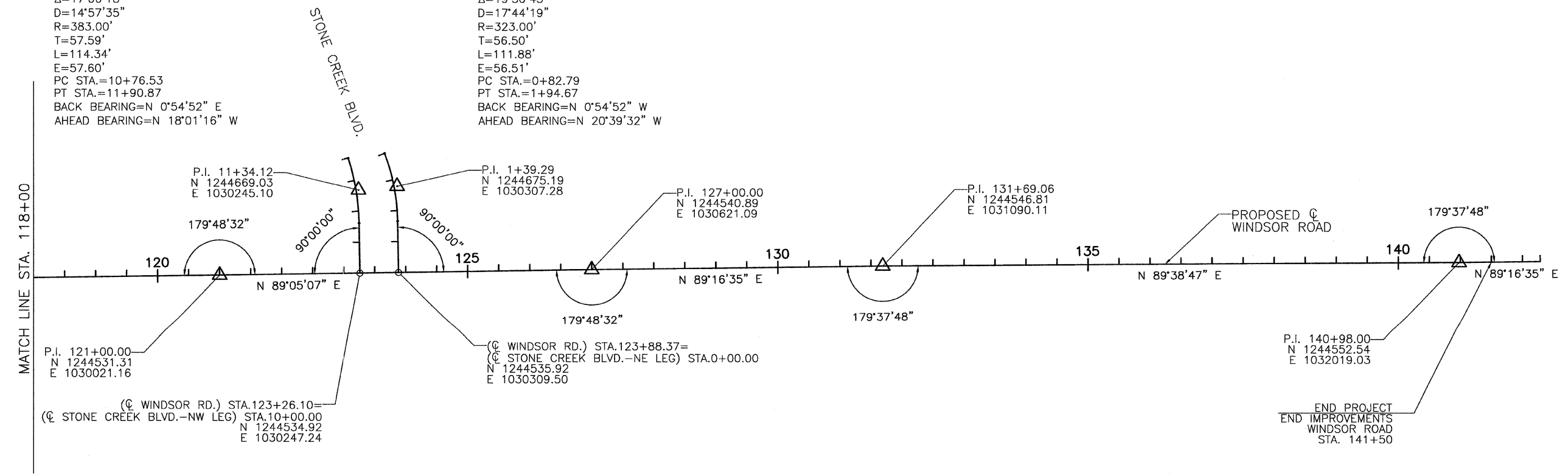
WINDSOR ROAD IMPROVEMENTS
HORIZONTAL ALIGNMENT
LAYOUT AND CONTROL

SHEET NO.
18
OF
145



STONE CREEK BLVD. NW LEG CURVE
PI STA.=11+34.12
 $\Delta=17^{\circ}06'18''$
 $D=14^{\circ}57'35''$
 $R=383.00'$
 $T=57.59'$
 $L=114.34'$
 $E=57.60'$
PC STA.=10+76.53
PT STA.=11+90.87
BACK BEARING=N 0°54'52" E
AHEAD BEARING=N 18°01'16" W

STONE CREEK BLVD. NE LEG CURVE
PI STA.=1+39.29
 $\Delta=19^{\circ}50'45''$
 $D=17^{\circ}44'19''$
 $R=323.00'$
 $T=56.50'$
 $L=111.88'$
 $E=56.51'$
PC STA.=0+82.79
PT STA.=1+94.67
BACK BEARING=N 0°54'52" W
AHEAD BEARING=N 20°39'32" W



MAR 19 2009 1:27PM HALIGEN&CONTR02.DWG