



CITY OF URBANA
PUBLIC WORKS
ENGINEERING DIVISION

DRAWN BY: AUS
CHECKED BY: GLJ

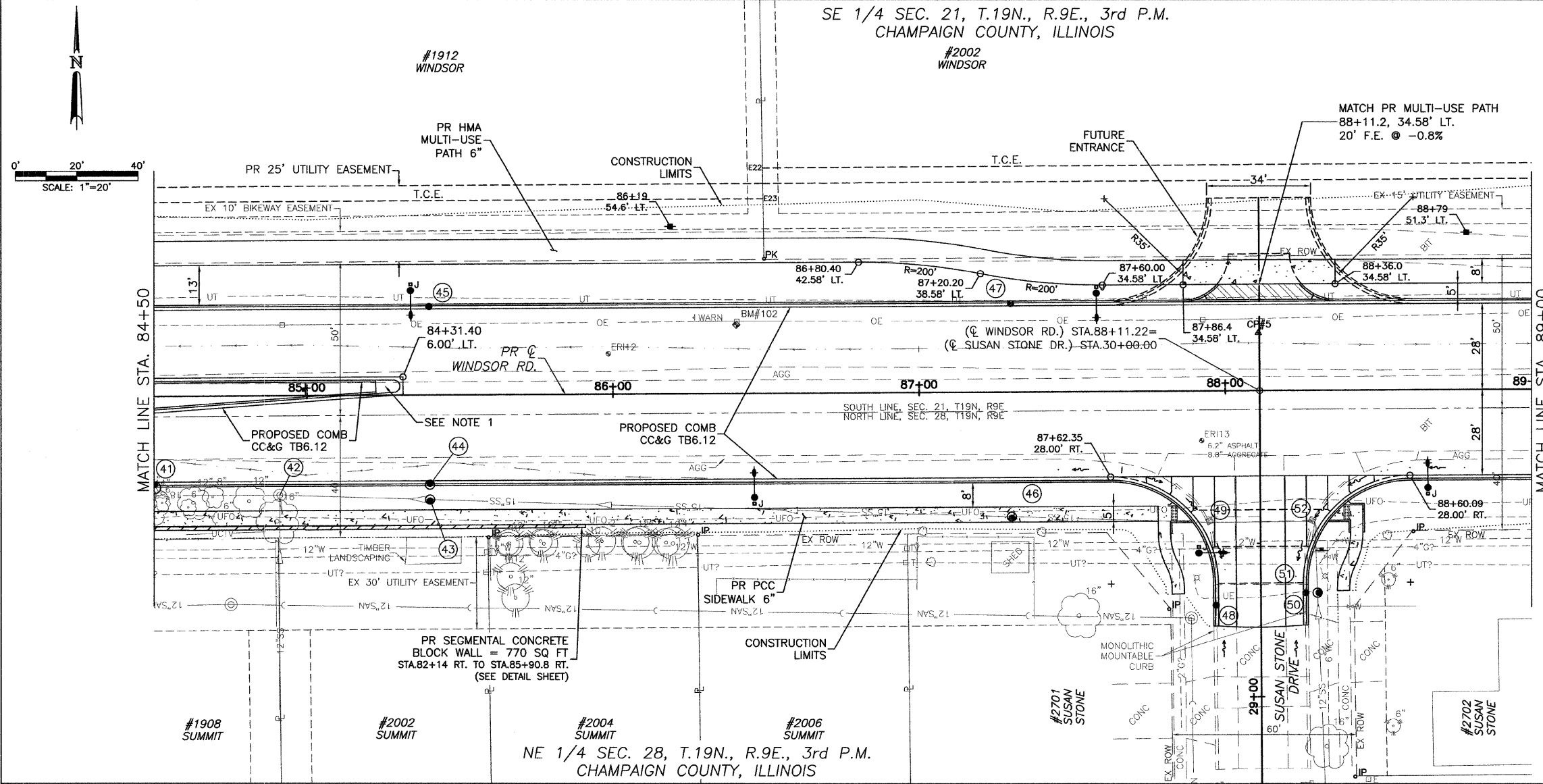
DATED: 1/09
DESIGNED BY: CES
CITY SECTION
00-00361-00-PV

WINDSOR ROAD IMPROVEMENTS
PLAN AND PROFILES
STA 84+50 TO STA 89+00

SHEET NO.
40
OF
145

CONTRACT NO. 91391

SE 1/4 SEC. 21, T.19N., R.9E., 3rd P.M.
CHAMPAIGN COUNTY, ILLINOIS



- LEGEND**
- [Symbol] DETECTABLE WARNINGS
 - [Symbol] PCC SIDEWALK
 - [Symbol] PCC DRIVEWAY PAVEMENT
 - [Symbol] AGGREGATE SURFACE COURSE, TYPE A
 - [Symbol] INCIDENTAL HMA SURFACE
 - (1) DRAINAGE STRUCTURE NO. (SEE DRAINAGE SHEETS)

SEE INTERSECTION DETAILS FOR ADDITIONAL INFORMATION.

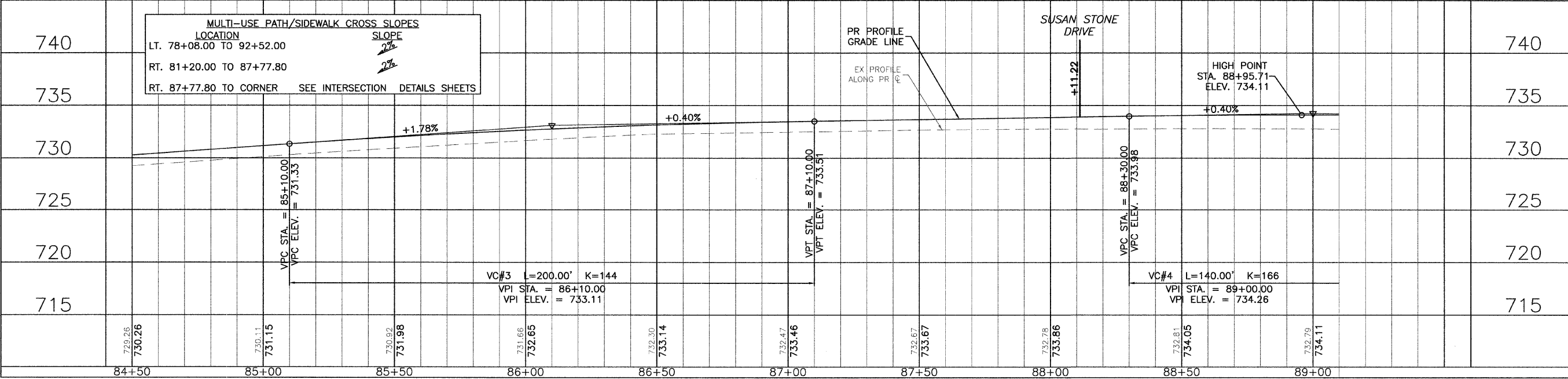
BM #102: STA. 86+40, 22.00' LT. RR SPIKE IN SECOND POWER POLE WEST OF INTERSECTION OF SUSAN STONE DR. & WINDSOR RD. ELEV.= 734.34

TBM #5: STA. 87+79.15, 186.05' RT. TOP CENTER NUT OF FIRE HYDRANT AT N.W. CORNER OF SUSAN STONE DR. & SUMMIT DR. ELEV.= 737.53

- NOTES:**
- PROPOSED CONCRETE MEDIAN, TYPE SB-6.12 (SEE MISC. DETAILS SHEETS)

TEMPORARY CONSTRUCTION EASEMENT STATIONS AND OFFSETS

POINT	STATION	OFFSET
E22	86+49.24	73.64 LT
E23	86+49.34	63.64 LT



MULTI-USE PATH/SIDEWALK CROSS SLOPES

LOCATION	SLOPE
LT. 78+08.00 TO 92+52.00	2%
RT. 81+20.00 TO 87+77.80	2%
RT. 87+77.80 TO CORNER	SEE INTERSECTION DETAILS SHEETS

MAR. 20 2009 10:14AM PP STA84+50-89+00.DWG