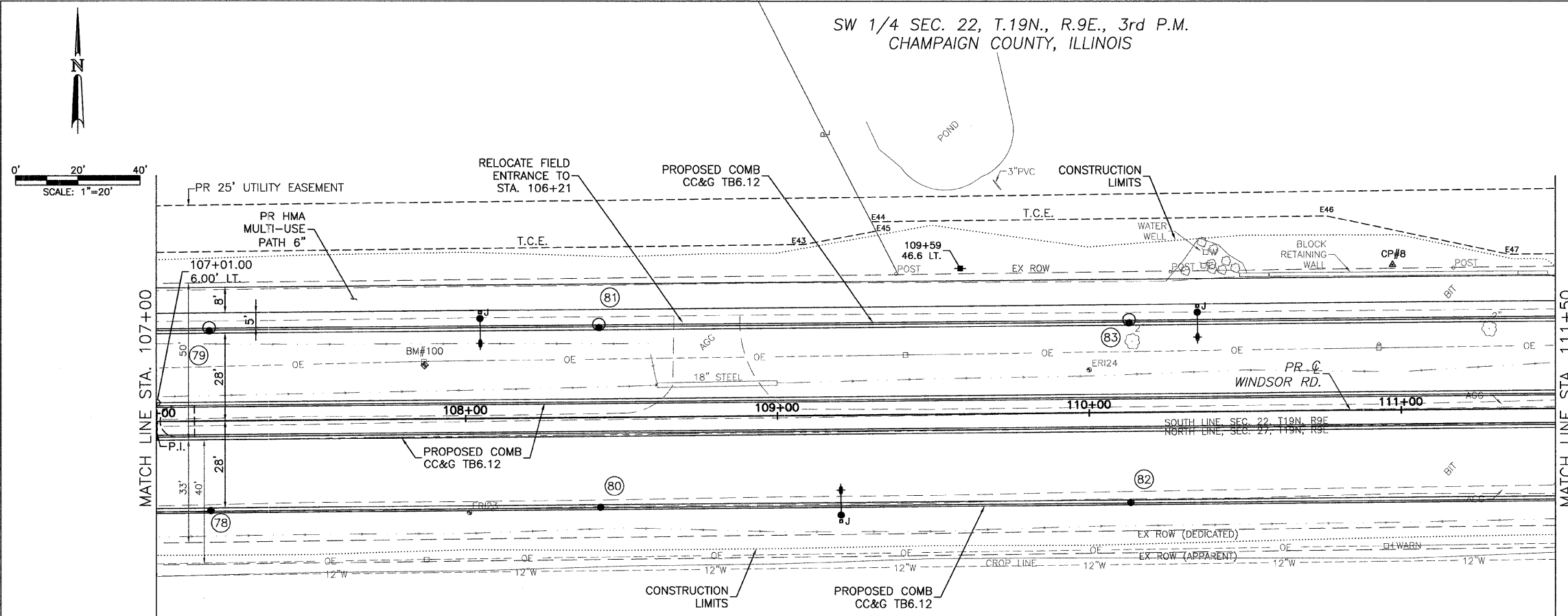




CITY OF URBANA
PUBLIC WORKS
ENGINEERING DIVISION

CONTRACT NO. 91391



- LEGEND**
- DETECTABLE WARNINGS
 - PCC SIDEWALK
 - PCC DRIVEWAY PAVEMENT
 - AGGREGATE SURFACE COURSE, TYPE A
 - INCIDENTAL HMA SURFACE
 - DRAINAGE STRUCTURE NO. (SEE DRAINAGE SHEETS)

BM #100: STA. 107+87.00, 17.00'
LT. RR SPIKE IN TENTH POWER POLE
W. OF STONE CREEK BLVD.
ELEV. = 706.41

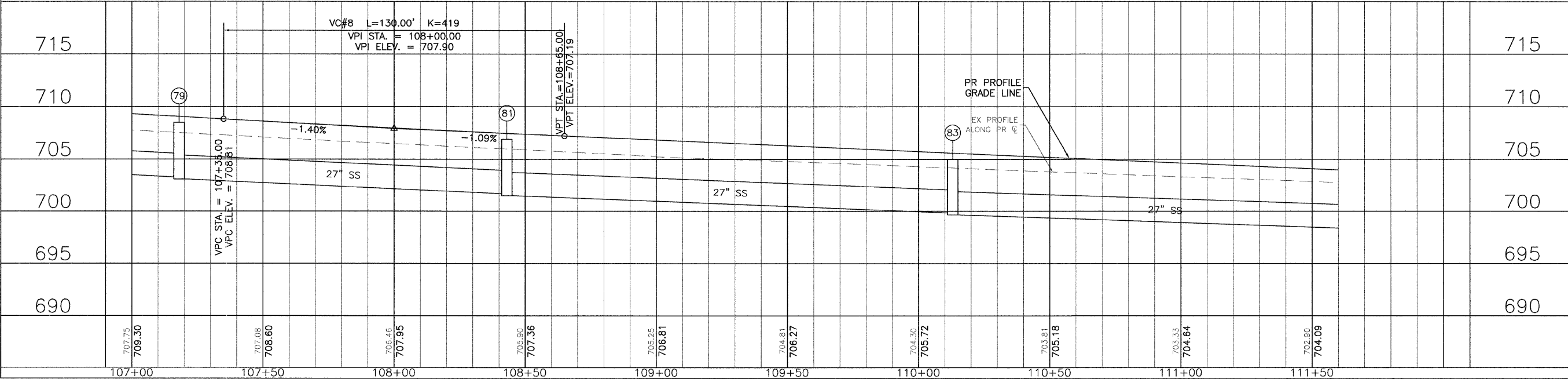
TEMPORARY CONSTRUCTION EASEMENT STATIONS AND OFFSETS

POINT	STATION	OFFSET
E43	109+09.00	54.00 LT
E44	109+30.67	61.77 LT
E45	109+32.17	58.77 LT
E46	110+76.50	62.26 LT
E47	111+35.00	49.45 LT

MULTI-USE PATH/SIDEWALK CROSS SLOPES
LOCATION: LT. 105+96.00 TO 122+55.10
SLOPE: 2%

EX UNDERGROUND TELEPHONE NOT SHOWN
FROM STA. 94+00 TO STA. 114+00

NW 1/4 SEC. 27, T.19N., R.9E., 3rd P.M.
CHAMPAIGN COUNTY, ILLINOIS



WINDSOR ROAD IMPROVEMENTS
PLAN AND PROFILES
STA 107+00 TO STA 111+50

SHEET NO.
45
OF
145

JAN 09 2009 11:42AM PP STA107+00-111+50.DWG