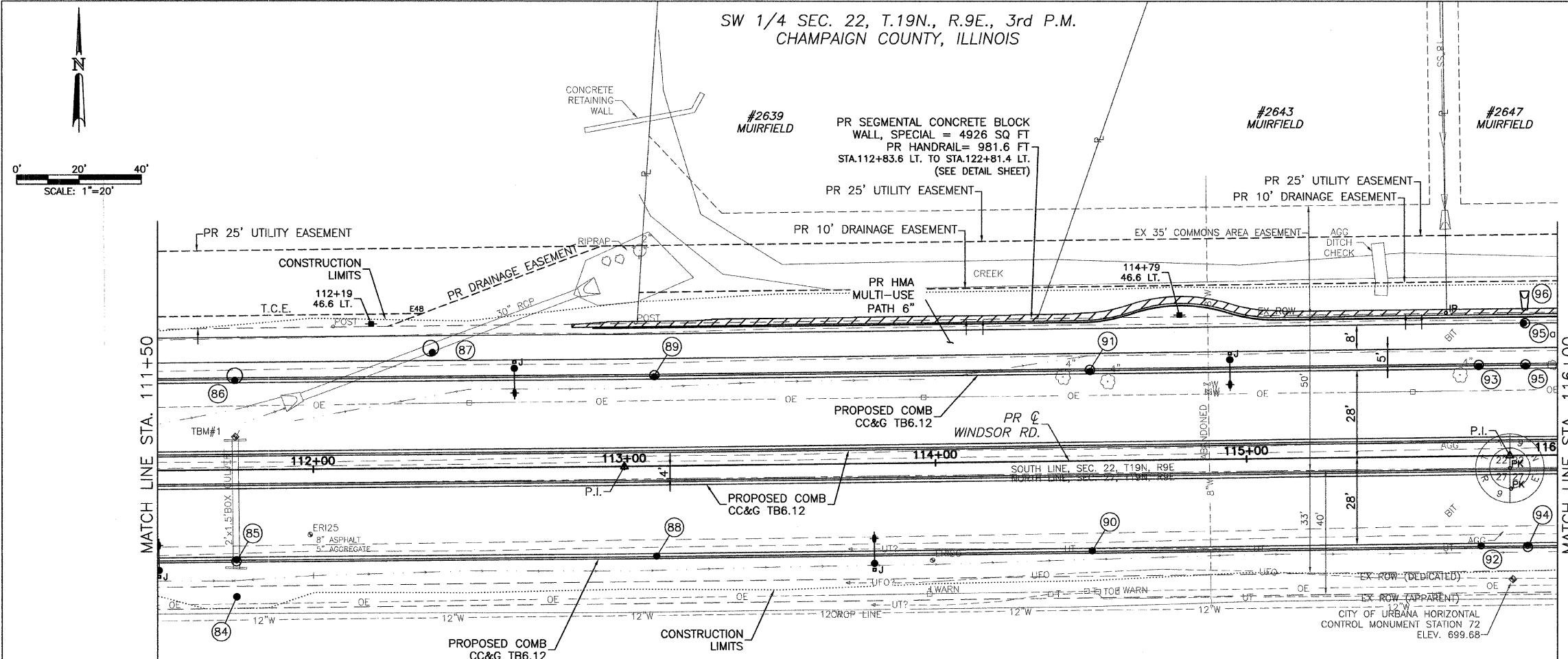


SW 1/4 SEC. 22, T.19N., R.9E., 3rd P.M.
CHAMPAIGN COUNTY, ILLINOIS

CONTRACT NO. 91391



CITY OF URBANA
PUBLIC WORKS
ENGINEERING DIVISION



- LEGEND**
- DETECTABLE WARNINGS
 - PCC SIDEWALK
 - PCC DRIVEWAY PAVEMENT
 - AGGREGATE SURFACE COURSE, TYPE A
 - INCIDENTAL HMA SURFACE
 - DRAINAGE STRUCTURE NO. (SEE DRAINAGE SHEETS)

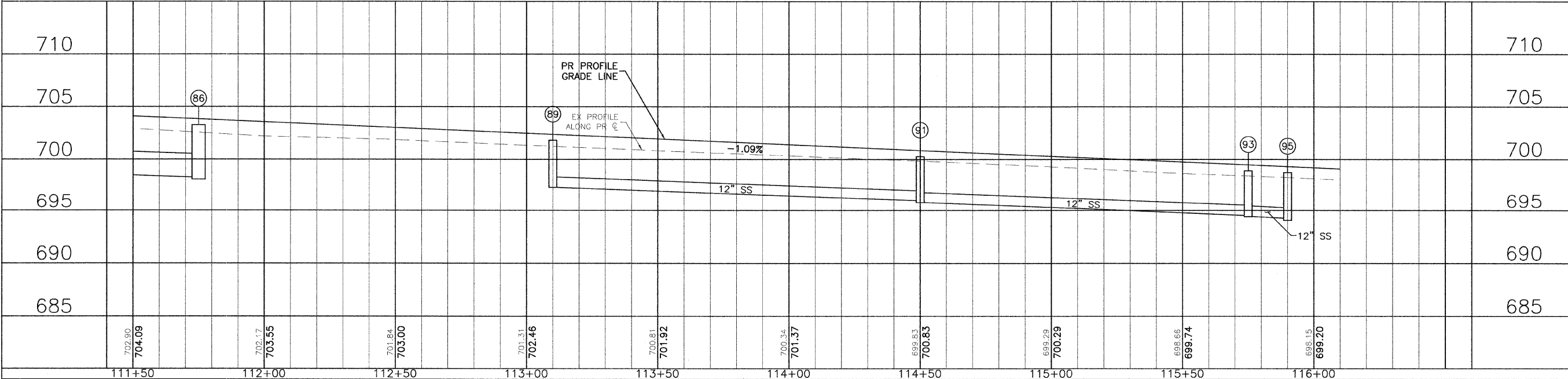
TBM #1: STA. 111+74.90, 10.50' LT.
CHISELED SQUARE ON CENTER OF CONCRETE
HEADWALL OF 2'X2' BOX CULVERT ON N.
SIDE OF WINDSOR RD., 1181' W. OF STONE
CREEK BLVD. ELEV.= 702.14

TEMPORARY CONSTRUCTION EASEMENT STATIONS AND OFFSETS

POINT	STATION	OFFSET
E48	112+35.48	49.79 LT

MULTI-USE PATH/SIDEWALK CROSS SLOPES
LOCATION LT. 105+96.00 TO 122+55.10
SLOPE 2%

NW 1/4 SEC. 27, T.19N., R.9E., 3rd P.M.
CHAMPAIGN COUNTY, ILLINOIS



WINDSOR ROAD IMPROVEMENTS
PLAN AND PROFILES
STA 111+50 TO STA 116+00

SHEET NO.
46
OF
145

MAR 20 2009 10:47AM PP STA111+50-116+00.DWG