

SE 1/4 SEC. 21, T.19N., R.9E., 3rd P.M.
CHAMPAIGN COUNTY, ILLINOIS

CONTRACT NO. 91391



CITY OF URBANA
PUBLIC WORKS
ENGINEERING DIVISION

DRAWN BY: AJS

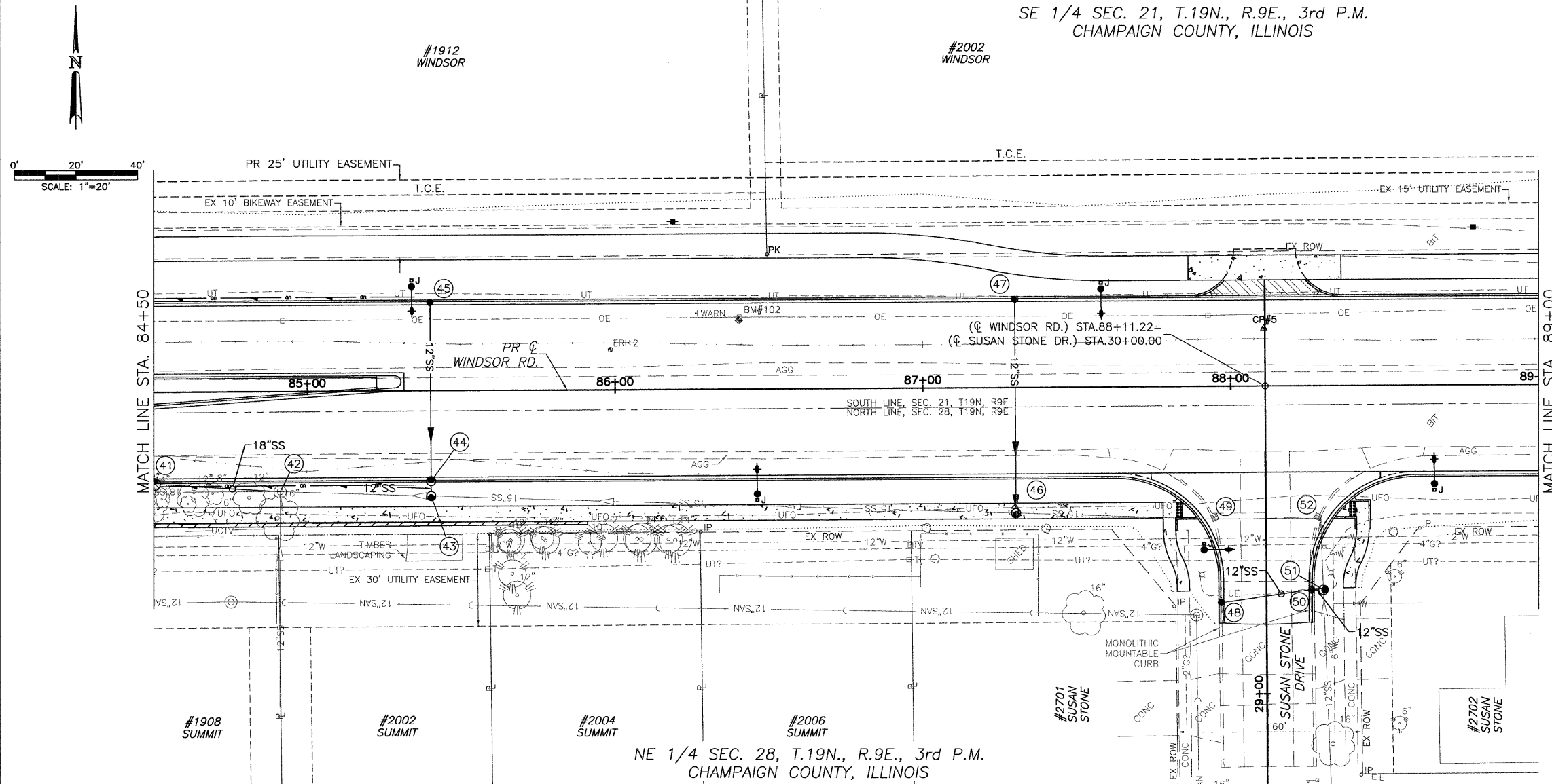
DESIGNED BY: CES

WINDSOR ROAD IMPROVEMENTS

DRAINAGE PLANS

STA 84+50 TO STA 89+00

SHEET NO.
57
OF
145



BM #102: STA. 86+40, 22.00'
LT. RR SPIKE IN SECOND
POWER POLE WEST OF
INTERSECTION OF SUSAN STONE
DR. & WINDSOR RD.
ELEV.= 734.34

TBM #5: STA. 87+79.15,
186.05' RT. TOP CENTER NUT
OF FIRE HYDRANT AT N.W.
CORNER OF SUSAN STONE DR.
& SUMMIT DR. ELEV.= 737.53

STORM SEWER STRUCTURE SCHEDULE

STR. NO.	STRUCTURE TYPE	OFF-SET SIDE	STA. OF C/L STR.	OFFSET OF C/L STR.	EX. T/O FRAME/GRATE ELEV.	PR. T/O FRAME/GRATE ELEV.	PR. T/O FLAT SLAB TOP ELEV.	INVERT IN ELEV.	U.S. STR. NO.	INVERT OUT ELEV.	D.S. STR. NO.
41	RD MAN 4 DIA T11V F&G	RT	84+50.00	29.79	---	729.70	---	725.92	42	725.72	40
42	MAN ADJ NEW T1F CL	RT	84+90.9	32.5	---	731.43	---	727.14	43	727.14	41
43	RD INLET TY B T1 F&CL	RT	85+40.00	34.17	---	732.51	---	727.42	46	727.42	42
44	RD INLET TY B T11V F&G	RT	85+40.00	29.29	---	731.27	---	727.63	45	727.53	43
45	INLETS TA T11V F&G	LT	85+40.00	28.79	---	731.27	---	---	---	727.91	44
46	RD INLET TY B T1 F&CL	RT	87+30.00	40.79	---	733.93	---	728.69	47	728.51	43
47	INLETS TA T11V F&G	LT	87+30.00	28.79	---	733.03	---	---	---	729.03	46
48	INLETS TA T11 F&G	LT	29+29.94	14.66	---	732.26	---	---	---	729.69	50
49	MAN ADJ NEW T1F CL	LT	29+57.0	17.6	731.97	732.71	---	729.11	52	728.88	46
50	INLETS TA T11 F&G	RT	29+33.74	14.66	---	732.53	---	729.55	48	729.45	51
51	RD INLET TY B T11 F&G	RT	29+33.74	18.52	---	732.95	---	729.44	50	729.34	52
52	MAN ADJ NEW T1F CL	RT	29+57.0	17.7	732.10	732.87	---	729.00	51	728.90	49

STORM SEWER PIPE SCHEDULE

LOCATION STR. - STR. OR STA., O.S.	STORM SEW CL A 1 12 (FOOT)	STORM SEW CL A 1 18 (FOOT)	GRADE %	TRENCH BACKFILL (CU YD)
41 - 42		39	3.13	4.5
43 - 44	2		0.50	0.3
44 - 45	56		0.50	4.6
46 - 47	68		0.50	13.7
48 - 50	28		0.50	3.2
50 - 51	2		1.00	0.4

E=EXISTING
*POUR INVERT IN BOTTOM OF MANHOLE.
**BUILD INLET OVER EXISTING STORM SEWER. MANHOLE INVERT IS ESTIMATED. FIELD VERIFY.
***POUR INVERT IN BOTTOM OF MANHOLE. REMOVE BRICK ADJUSTING RINGS DURING MANHOLE ADJUSTMENT.

JAN 09 2009 1:24PM DRAINAGE_STA84+50-89+00.DWG