

SW 1/4 SEC. 22, T.19N., R.9E., 3rd P.M.
CHAMPAIGN COUNTY, ILLINOIS

CONTRACT NO. 91391



CITY OF URBANA
PUBLIC WORKS
ENGINEERING DIVISION

DRAWN BY: AJJ

DESIGNED BY: CES

CITY SECTION
00-00361-00-PV

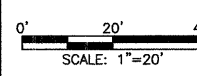
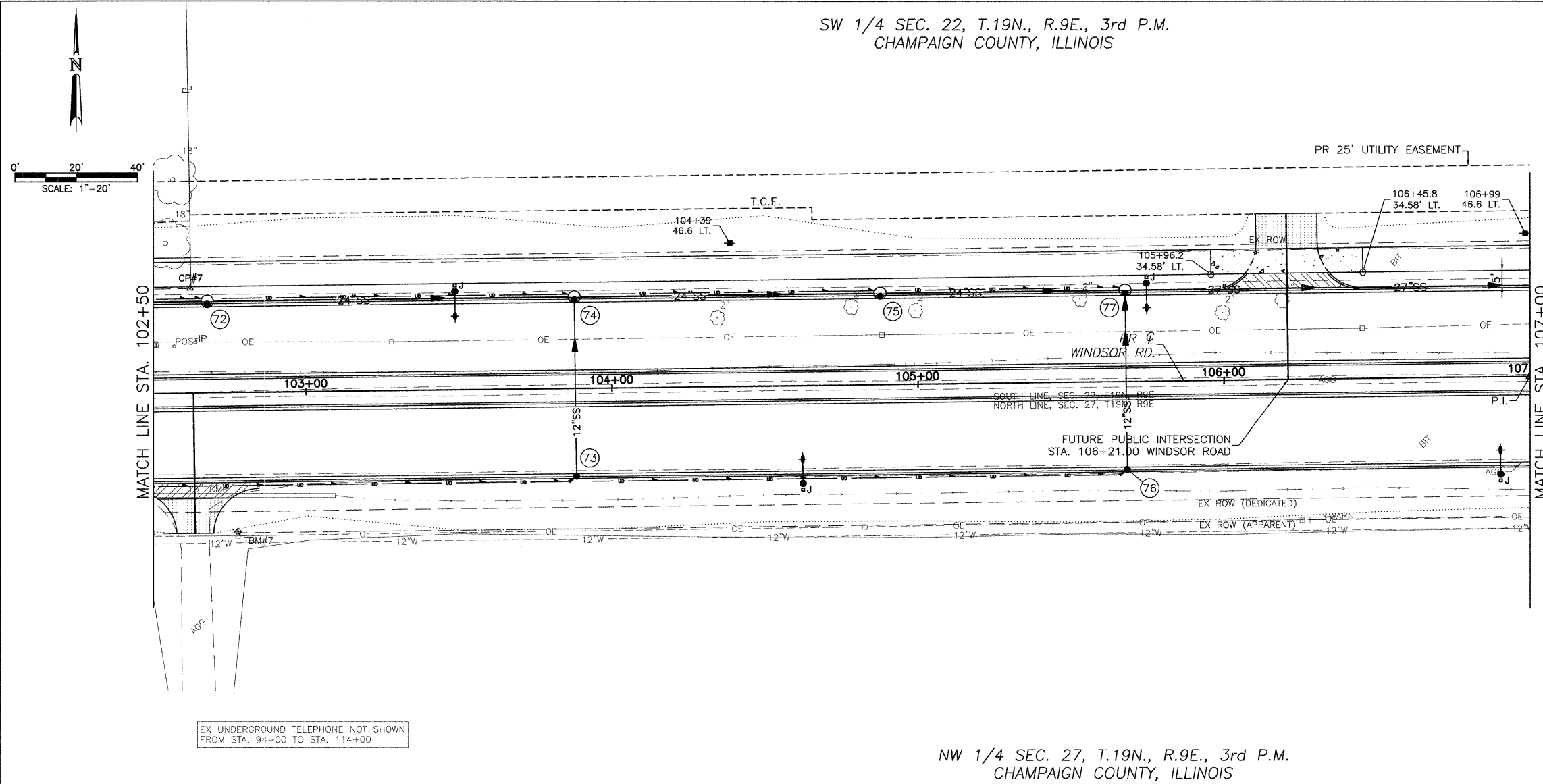
WINDSOR ROAD IMPROVEMENTS

DRAINAGE PLANS

STA 102+50 TO STA 107+00

SHEET NO.

61
OF
145



EX UNDERGROUND TELEPHONE NOT SHOWN
FROM STA. 94+00 TO STA. 114+00

TBM #7: STA. 102+78.20 46.00'
RT. P.K. NAIL IN N. FACE OF
POWER POLE ON THE S. SIDE
WINDSOR RD. FIFTH POLE E. OF
SUSAN STONE DR. ELEV.=716.16

NW 1/4 SEC. 27, T.19N., R.9E., 3rd P.M.
CHAMPAIGN COUNTY, ILLINOIS

STR. NO.	STRUCTURE TYPE	OFF-SET SIDE	STA. OF C/L STR.	OFFSET OF C/L STR.	EX. T/O FRAME/GRATE ELEV.	PR. T/O FRAME/GRATE ELEV.	PR. T/O FLAT SLAB TOP ELEV.	INVERT IN ELEV.	U.S. STR. NO.	INVERT OUT ELEV.	D.S. STR. NO.
72	RD MAN 4 DIA T11V F&G	LT	102+68.00	29.79	----	714.61	713.11	709.63	71	709.53	74
73	INLETS TA T11V F&G	RT	103+88.00	28.79	----	713.10	----	----	---	709.10	74
74	RD MAN 4 DIA T11V F&G	LT	103+88.00	29.79	----	713.10	711.60	708.12	72	707.92	75
								708.82	73		
75	RD MAN 4 DIA T11V F&G	RT	104+88.00	29.79	----	711.70	710.20	706.72	74	706.52	77
76	INLETS TA T11V F&G	LT	105+68.00	28.79	----	710.58	----	----	---	706.58	77
77	RD MAN 4 DIA T11V F&G	LT	105+68.00	29.79	----	710.58	709.08	705.40	75	705.20	79
								706.30	76		

LOCATION STR. - STR. OR STA., O.S.	STORM SEW CL A 1 12 (FOOT)	STORM SEW CL A 1 24 (FOOT)	STORM SEW CL A 1 27 (FOOT)	GRADE %	TRENCH BACKFILL (CU YD)
72 - 74		116		1.13	31.1
73 - 74	56			0.50	8.4
74 - 75		96		1.25	21.4
75 - 77		76		1.47	18.1
76 - 77	56			0.50	8.4
77 - 79			147	1.29	34.5

JAN 09 2009 1:25PM DRAINAGE_STA102+50-107+00.DWG