



CITY OF URBANA  
PUBLIC WORKS  
ENGINEERING DIVISION

DRAWN BY: JSC  
DESIGNED BY: CES  
CHECKED BY: GLJ  
CITY SECTION  
00-00361-00-PV

WINDSOR ROAD IMPROVEMENTS  
INTERSECTION DETAILS  
STONE CREEK BOULEVARD

SHEET NO.  
73  
OF  
145

CONTRACT NO. 91391

NOTES:

1. THE FINAL FINISH OF THE P.C. CONCRETE PAVEMENT SHALL BE TYPE B IN ACCORDANCE WITH ARTICLE 402.09(e)(2) OF THE STANDARD SPECIFICATIONS.
2. THE 2' STUBS SHALL BE POURED MONOLITHIC WITH THE COMBINATION CONCRETE CURB AND GUTTER. THE COST OF THE ADDITIONAL GUTTER FLAG WIDTH SHALL BE INCLUDED IN THE COST OF THE COMBINATION CONCRETE CURB AND GUTTER, TYPE B-6.12.
3. ALL SAWS TRANSVERSE CONTRACTION JOINTS IN THE PAVEMENT MUST EXTEND THROUGH THE CURB AND GUTTER.
4. ALL SAWS JOINTS IN THE PAVEMENT AND CURB AND GUTTER SHALL BE SEALED WITH A JOINT SEALER MEETING THE REQUIREMENTS OF ARTICLE 606.07 OF THE STANDARD SPECIFICATIONS.
5. TRANSVERSE CONSTRUCTION JOINTS SHALL BE CONSTRUCTED IN ACCORDANCE WITH THE APPLICABLE PORTIONS OF SECTION 420 OF THE STANDARD SPECIFICATIONS. THE COST OF FURNISHING AND INSTALLING THE TRANSVERSE CONSTRUCTION JOINTS, INCLUDING DRILLING AND GROUTING, WILL NOT BE PAID FOR SEPARATELY BUT SHALL BE CONSIDERED INCLUDED IN THE VARIOUS CURB AND GUTTER AND/OR PAVEMENT PAY ITEMS AND NO ADDITIONAL COMPENSATION WILL BE ALLOWED.
6. ALL ELEVATIONS REFERRED TO ARE TO TOP OF FINISHED CONSTRUCTION.
7. ALL STREET RADII ARE DIMENSIONED TO THE EDGE OF PAVEMENT, UNLESS OTHERWISE SHOWN.

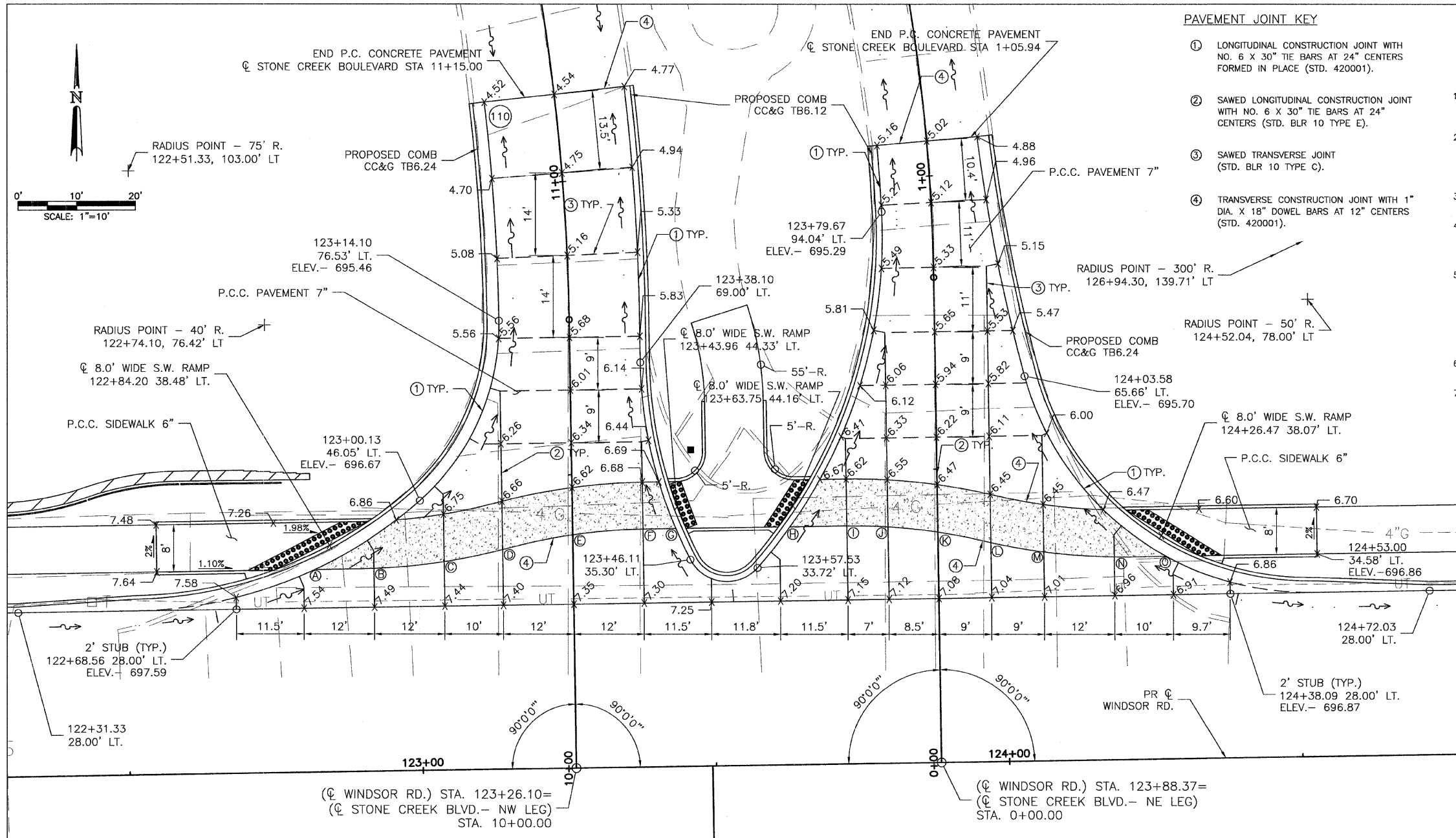
PAVEMENT JOINT KEY

- ① LONGITUDINAL CONSTRUCTION JOINT WITH NO. 6 X 30" TIE BARS AT 24" CENTERS FORMED IN PLACE (STD. 420001).
- ② SAWS LONGITUDINAL CONSTRUCTION JOINT WITH NO. 6 X 30" TIE BARS AT 24" CENTERS (STD. BLR 10 TYPE E).
- ③ SAWS TRANSVERSE JOINT (STD. BLR 10 TYPE C).
- ④ TRANSVERSE CONSTRUCTION JOINT WITH 1" DIA. X 18" DOWEL BARS AT 12" CENTERS (STD. 420001).

LEGEND

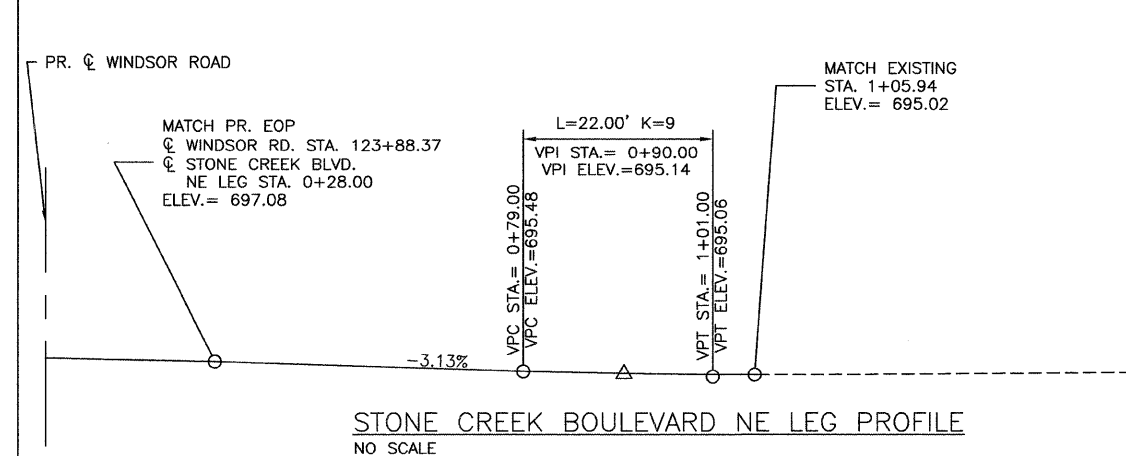
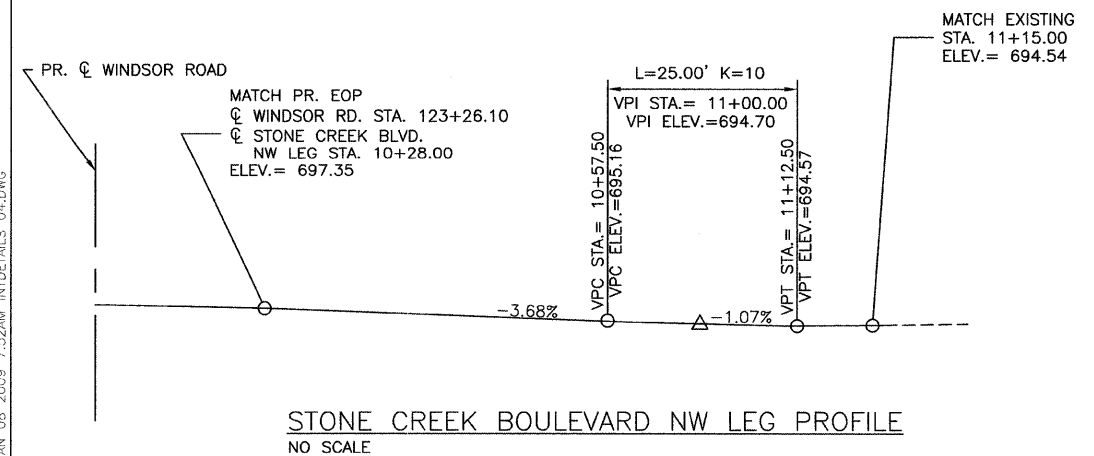
- 4.00 - 7.99 ADD 690.00
- PCC PAVEMENT, 7" (COLORED) SEE SPECIAL PROVISIONS
- ① DRAINAGE STRUCTURE NO. (SEE DRAINAGE SHEETS)

POINT	STATION	OFFSET	ELEVATION
A	122+82.06	-34.58	697.36
B	122+92.10	-34.61	697.24
C	123+04.10	-35.58	697.11
D	123+14.10	-37.48	697.00
E	123+26.10	-39.80	696.92
F	123+38.10	-40.58	696.94
G	123+43.70	-40.58	696.95
H	123+63.16	-40.58	696.96
I	123+72.87	-40.58	696.85
J	123+79.87	-40.31	696.78
K	123+88.37	-39.29	696.73
L	123+97.37	-37.37	696.73
M	124+06.37	-35.66	696.73
N	124+18.37	-34.62	696.75
O	124+27.24	-34.58	696.76



STONE CREEK BOULEVARD NW LEG PLAN

STONE CREEK BOULEVARD NE LEG PLAN



JAN 08 2009 7:52AM INTDETAILS 04.DWG