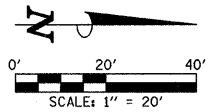


REMOVAL NOTES



- EXISTING MANHOLES AND VALVE BOXES WITHIN THE LIMITS OF MILLING AND RESURFACING THAT ARE NOT SHOWN TO BE ADJUSTED HAVE EXISTING CONCRETE AROUND THE FRAMES THAT IS TO REMAIN. THE CONTRACTOR SHALL MILL AROUND THE EXISTING CONCRETE AND LEAVE IT IN PLACE.
- THE CONCRETE AROUND EXISTING VALVE BOXES TO BE ADJUSTED THAT ARE PART OF THE CHILLED WATER SYSTEM SHALL BE STAMPED WITH THE LEGEND SHOWN ON THE PLANS. THE LETTER SIZE FOR THE PROPOSED LEGEND SHALL MATCH THE EXISTING LETTER SIZE.
- THE CONTRACTOR SHALL SALVAGE THE BRICK PAVERS THAT ARE REMOVED AND USE THEM FOR THE CONSTRUCTION OF THE PROPOSED BRICK PAVEMENT SIDEWALK AT THE LOCATIONS SHOWN ON THE PLANS AND AS APPROVED BY THE ENGINEER. THE PROPOSED LOCATIONS AND THE EXISTING LOCATIONS FOR THE BRICK PAVEMENT SIDEWALK MAY NOT BE THE SAME. SEE THE SITE IMPROVEMENT PLANS FOR ADDITIONAL INFORMATION. THIS WORK SHALL BE INCLUDED IN THE COST OF REMOVE AND REINSTALL BRICK PAVEMENT.
- BRICK PAVERS THAT ARE REMOVED FOR THE REMOVAL OR INSTALLATION OF PARKING METER POSTS, LIGHT POLES, OR JUNCTION BOXES SHALL BE REINSTALLED AT THEIR ORIGINAL LOCATIONS UNLESS OTHERWISE DIRECTED BY THE ENGINEER.
- THE CONTRACTOR SHALL MAKE FULL DEPTH SAW CUTS AT ALL PAVEMENT, SIDEWALK, CURB, AND CURB AND GUTTER REMOVAL LIMITS.
- THE REMOVAL LIMITS MAY BE ADJUSTED AS DIRECTED BY THE ENGINEER.
- THE SIDEWALK REMOVAL LIMITS FOR PARKING METER POST REMOVAL SHALL BE TWO FEET ALONG THE LENGTH OF THE PANEL AS SHOWN ON THE MISCELLANEOUS DETAILS OR AS OTHERWISE DIRECTED BY THE ENGINEER. THE BRICK PAVEMENT REMOVAL LIMITS FOR PARKING METER POST REMOVAL OR INSTALLATION SHALL BE TWO FEET WIDE AND TWO FEET LONG OR AS OTHERWISE DIRECTED BY THE ENGINEER. THE SIDEWALK AND BRICK PAVEMENT REMOVAL LIMITS FOR LIGHT POLE AND JUNCTION BOX REMOVAL SHALL BE FIVE FEET LONG FOR THE WIDTH OF THE SIDEWALK OR PAVEMENT OR AS OTHERWISE DIRECTED BY THE ENGINEER. THE SIDEWALK AND BRICK PAVEMENT REMOVAL LIMITS FOR LIGHT POLE AND JUNCTION BOX INSTALLATION SHALL BE TEN FEET LONG FOR THE WIDTH OF THE SIDEWALK OR PAVEMENT OR AS OTHERWISE DIRECTED BY THE ENGINEER. THE REMOVAL LIMITS SHALL BE REDUCED AS DIRECTED BY THE ENGINEER TO MINIMIZE THE AMOUNT OF REMOVAL AND SUBSEQUENT REPLACEMENT REQUIRED FOR THIS WORK.
- SUB-BASE GRANULAR MATERIAL, TYPE B 4", SHALL BE INSTALLED BELOW THE CLASS B PATCHES. SEE THE SITE IMPROVEMENTS PLANS FOR ADDITIONAL INFORMATION.

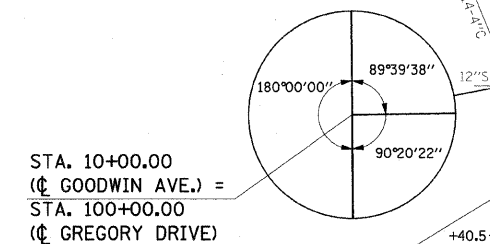
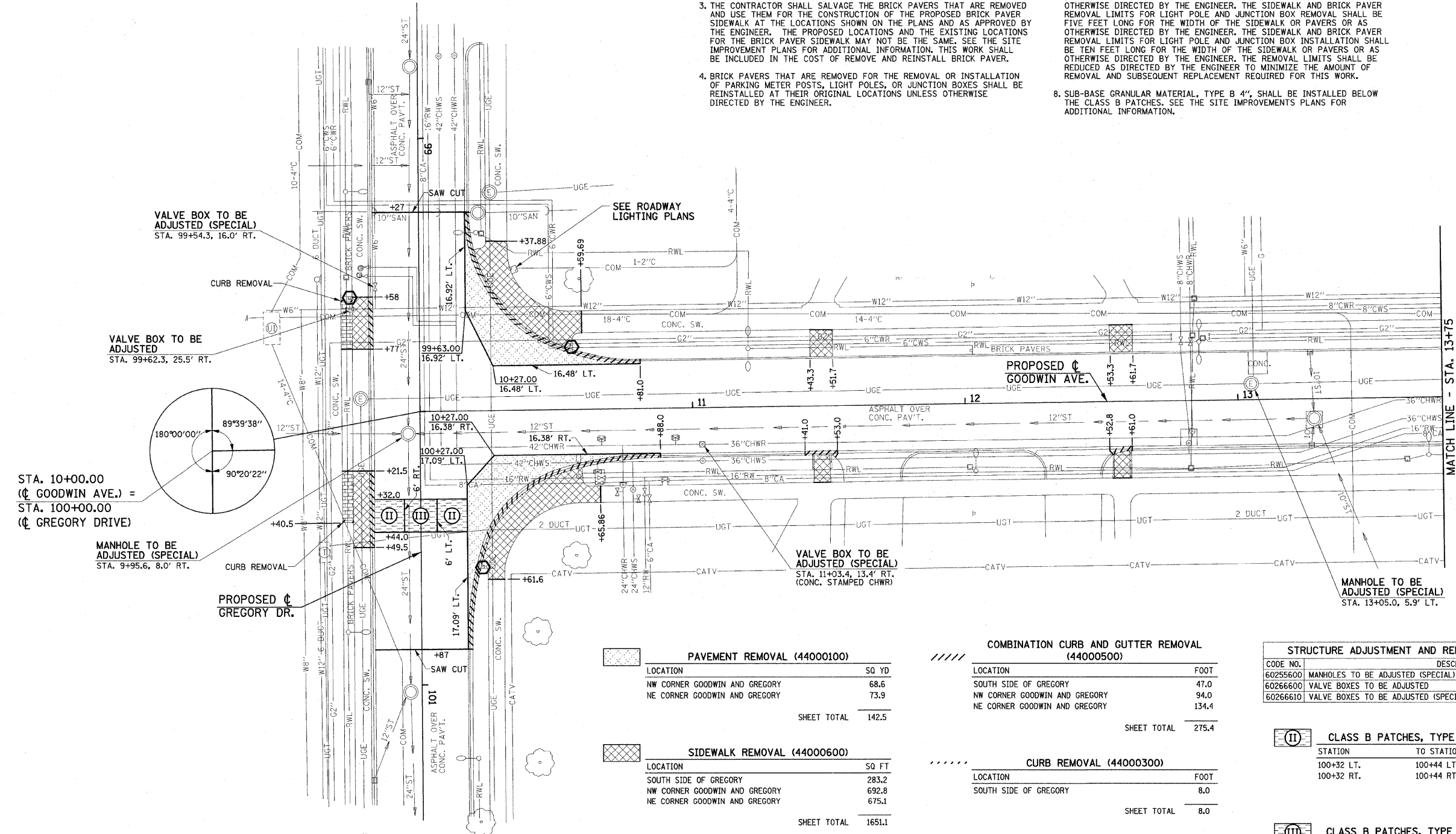
SEE THE TRAFFIC SIGNAL PLANS FOR TRAFFIC SIGNAL REMOVAL ITEMS.

SEE THE ROADWAY LIGHTING PLANS FOR ROADWAY LIGHTING REMOVAL ITEMS.

SEE DRAINAGE PLANS FOR ADDITIONAL INFORMATION.

THE LIMITS OF SIDEWALK REMOVAL AND BRICK PAVEMENT REMOVAL ARE NOT SHOWN FOR THE REMOVAL AND/OR INSTALLATION OF LIGHT POLES, JUNCTION BOXES, OR PARKING METERS. QUANTITIES FOR THIS WORK ARE INCLUDED ON THE PLANS.

THE STRUCTURE INFORMATION SHOWN IN ITALICS IS ALSO SHOWN ON THE DRAINAGE PLANS. THE SCHEDULE OF QUANTITIES FOR THESE ITEMS IS SHOWN ON THE REMOVAL PLANS.



PAVEMENT REMOVAL (44000100)	
LOCATION	SQ YD
NW CORNER GOODWIN AND GREGORY	68.6
NE CORNER GOODWIN AND GREGORY	73.9
<b>SHEET TOTAL</b>	<b>142.5</b>

SIDEWALK REMOVAL (44000600)	
LOCATION	SQ FT
SOUTH SIDE OF GREGORY	283.2
NW CORNER GOODWIN AND GREGORY	692.8
NE CORNER GOODWIN AND GREGORY	675.1
<b>SHEET TOTAL</b>	<b>1651.1</b>

REMOVE AND REINSTALL BRICK PAVEMENT (XX003313)	
LOCATION	SQ FT
SOUTH SIDE OF GREGORY	142.8
ROADWAY LIGHTING	75.0
<b>SHEET TOTAL</b>	<b>217.8</b>

COMBINATION CURB AND GUTTER REMOVAL (44000500)	
LOCATION	FOOT
SOUTH SIDE OF GREGORY	47.0
NW CORNER GOODWIN AND GREGORY	94.0
NE CORNER GOODWIN AND GREGORY	134.4
<b>SHEET TOTAL</b>	<b>275.4</b>

CURB REMOVAL (44000300)	
LOCATION	FOOT
SOUTH SIDE OF GREGORY	8.0
<b>SHEET TOTAL</b>	<b>8.0</b>

REMOVING AND RESETTING STREET SIGNS (Z0051500)	
LOCATION	EACH
STA. 99+58 RT.	1
STA. 100+57 LT.	1
STA. 10+56 LT.	1
<b>SHEET TOTAL</b>	<b>3</b>

STRUCTURE ADJUSTMENT AND REMOVAL PAY ITEMS - 10+00 TO 13+75			
CODE NO.	DESCRIPTION	UNIT	QUAN.
60255600	MANHOLES TO BE ADJUSTED (SPECIAL)	EACH	2
60266600	VALVE BOXES TO BE ADJUSTED	EACH	1
60266610	VALVE BOXES TO BE ADJUSTED (SPECIAL)	EACH	2

CLASS B PATCHES, TYPE II, 8" (44200934)		
STATION	TO STATION	SQ YD
100+32 LT.	100+44 LT.	14.8
100+32 RT.	100+44 RT.	14.6
<b>SHEET TOTAL</b>		<b>29.4</b>

CLASS B PATCHES, TYPE III, 8" (44200942)		
STATION	TO STATION	SQ YD
100+32 LT. & RT.	100+44 LT. & RT.	16.0
<b>SHEET TOTAL</b>		<b>16.0</b>

REVISED 4-6-09

FILE NAME = p:\u0070052\plans\sheets\10-Removal.dgn	DESIGNED - JAJ	REVISED -
PLOT DATE = 2/27/2009 3:21:38 PM	DRAWN - DLM	REVISED -
	CHECKED - RLH	REVISED -
	DATE - 01-2009	REVISED -

STATE OF ILLINOIS  
DEPARTMENT OF TRANSPORTATION

**REMOVALS/RELOCATIONS PLAN**

SCALE: 1"=20'    SHEET NO. 11 OF 75 SHEETS    STA. 10+00 TO STA. 13+75

F.A.U. RITE. 7175	SECTION 07-00456-00-RS	COUNTY CHAMPAIGN	TOTAL SHEETS 75	SHEET NO. 11
GOODWIN AVENUE		CONTRACT NO. 91392		
FED. ROAD DIST. NO. ILLINOIS FED. AID PROJECT				