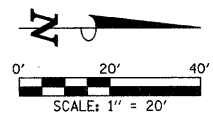


STRUCTURE ADJUSTMENT AND REMOVAL PAY ITEMS - 30+75 TO 34+75			
CODE NO.	DESCRIPTION	UNIT	QUAN.
60255500	MANHOLES TO BE ADJUSTED	EACH	1
60255600	MANHOLES TO BE ADJUSTED (SPECIAL)	EACH	9
60258200	MANHOLES TO BE RECONSTRUCTED WITH NEW TYPE 1 FRAME, CLOSED LID	EACH	1
60260100	INLETS TO BE ADJUSTED	EACH	1
60266600	VALVE BOXES TO BE ADJUSTED	EACH	2
60266610	VALVE BOXES TO BE ADJUSTED (SPECIAL)	EACH	9
60500060	REMOVING INLETS	EACH	2



SEE THE TRAFFIC SIGNAL PLANS FOR TRAFFIC SIGNAL REMOVAL ITEMS.

SEE THE ROADWAY LIGHTING PLANS FOR ROADWAY LIGHTING REMOVAL ITEMS.

SEE DRAINAGE PLANS FOR ADDITIONAL INFORMATION.

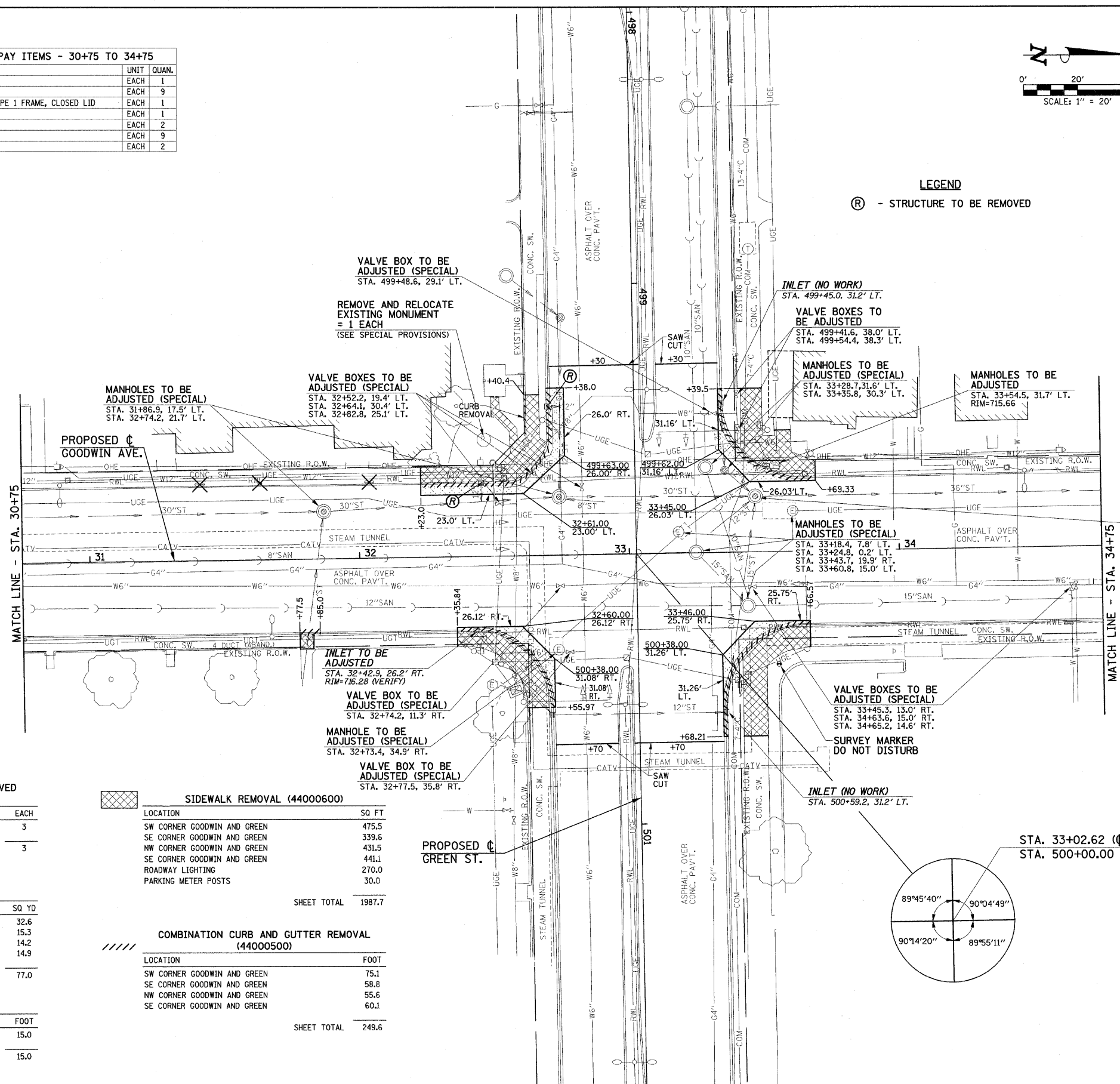
THE LIMITS OF SIDEWALK REMOVAL AND BRICK PAVEMENT REMOVAL ARE NOT SHOWN FOR THE REMOVAL AND/OR INSTALLATION OF LIGHT POLES, JUNCTION BOXES, OR PARKING METERS. QUANTITIES FOR THIS WORK ARE INCLUDED ON THE PLANS.

THE STRUCTURE INFORMATION SHOWN IN ITALICS IS ALSO SHOWN ON THE DRAINAGE PLANS. THE SCHEDULE OF QUANTITIES FOR THESE ITEMS IS SHOWN ON THE REMOVAL PLANS.

SEE SHEET 11 FOR REMOVAL NOTES

**LEGEND**

(R) - STRUCTURE TO BE REMOVED



✕ PARKING METER POSTS TO BE REMOVED (Z0036700)

STATION	TO STATION	EACH
31+41 LT.	32+04 LT.	3
SHEET TOTAL		3

▨ PAVEMENT REMOVAL (44000100)

LOCATION	SQ. YD.
SW CORNER GOODWIN AND GREEN	32.6
SE CORNER GOODWIN AND GREEN	15.3
NW CORNER GOODWIN AND GREEN	14.2
SE CORNER GOODWIN AND GREEN	14.9
SHEET TOTAL	77.0

▤ CURB REMOVAL (44000300)

LOCATION	FOOT
SW CORNER GOODWIN AND GREEN	15.0
SHEET TOTAL	15.0

▨ SIDEWALK REMOVAL (44000600)

LOCATION	SQ. FT.
SW CORNER GOODWIN AND GREEN	475.5
SE CORNER GOODWIN AND GREEN	339.6
NW CORNER GOODWIN AND GREEN	431.5
SE CORNER GOODWIN AND GREEN	441.1
ROADWAY LIGHTING	270.0
PARKING METER POSTS	30.0
SHEET TOTAL	1987.7

▨ COMBINATION CURB AND GUTTER REMOVAL (44000500)

LOCATION	FOOT
SW CORNER GOODWIN AND GREEN	75.1
SE CORNER GOODWIN AND GREEN	58.8
NW CORNER GOODWIN AND GREEN	55.6
SE CORNER GOODWIN AND GREEN	60.1
SHEET TOTAL	249.6

FILE NAME = p:\u0070052\plans\sheet\10-Removal.dgn  
 PLOT DATE = 2/27/2009 3:21:42 PM

DESIGNED - JAJ  
 DRAWN - DLM  
 CHECKED - RLH  
 DATE - 01-2009

REVISED -  
 REVISED -  
 REVISED -  
 REVISED -

STATE OF ILLINOIS  
 DEPARTMENT OF TRANSPORTATION

REMOVALS/RELOCATIONS PLAN

SCALE: 1"=20' SHEET NO. 16 OF 75 SHEETS STA. 30+75 TO STA. 34+75

F.A.U. RTE.	SECTION	COUNTY	TOTAL SHEETS	SHEET NO.
7175	07-00456-00-RS	CHAMPAIGN	75	16
GOODWIN AVENUE		CONTRACT NO. 91392		
FED. ROAD DIST. NO.		ILLINOIS FED. AID PROJECT		

REVISED 4-6-09