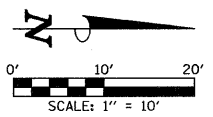
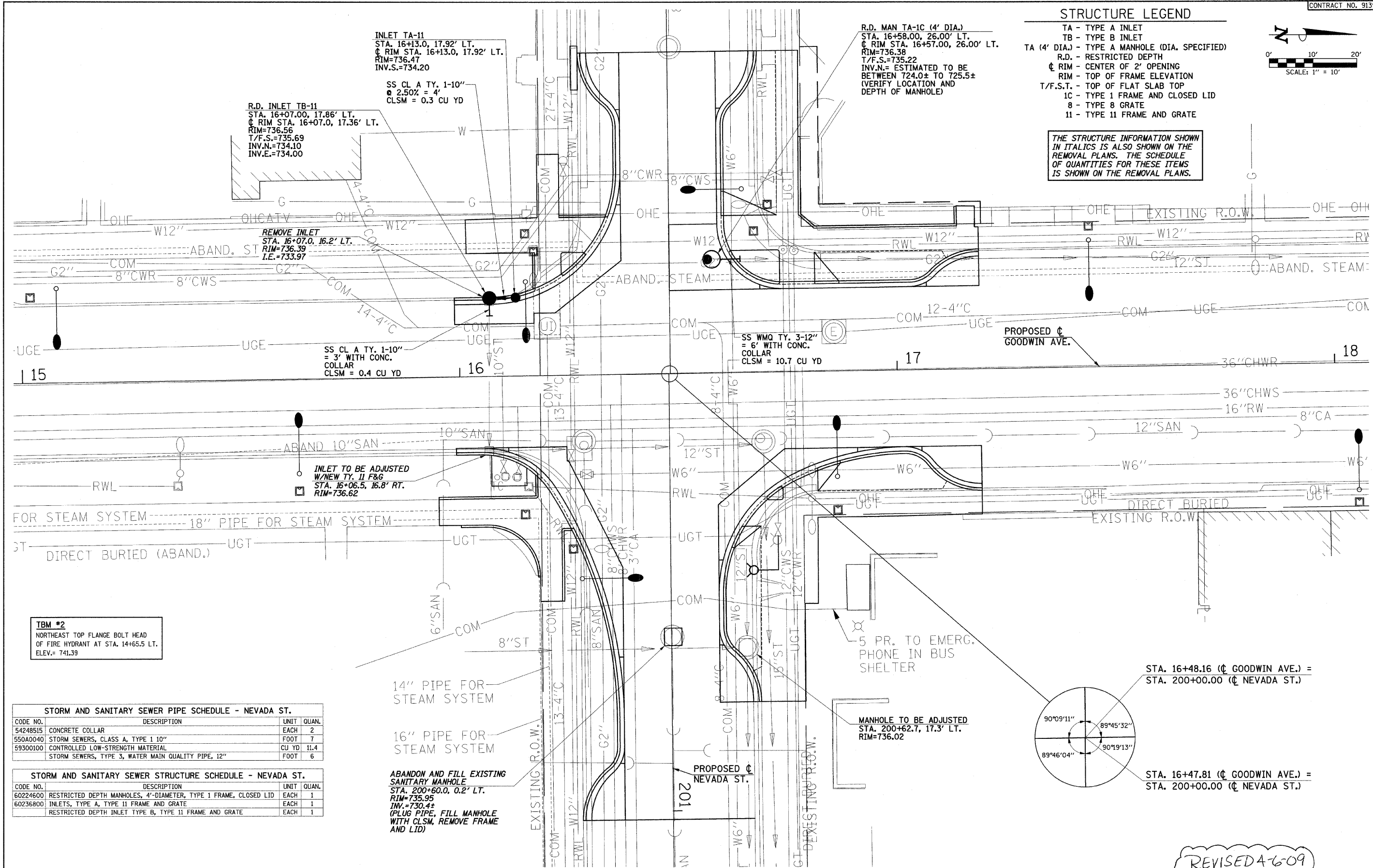


STRUCTURE LEGEND

- TA - TYPE A INLET
- TB - TYPE B INLET
- TA (4' DIA.) - TYPE A MANHOLE (DIA. SPECIFIED)
- R.D. - RESTRICTED DEPTH
- ⊕ RIM - CENTER OF 2' OPENING
- RIM - TOP OF FRAME ELEVATION
- T/F.S.T. - TOP OF FLAT SLAB TOP
- 1C - TYPE 1 FRAME AND CLOSED LID
- 8 - TYPE 8 GRATE
- 11 - TYPE 11 FRAME AND GRATE



THE STRUCTURE INFORMATION SHOWN IN ITALICS IS ALSO SHOWN ON THE REMOVAL PLANS. THE SCHEDULE OF QUANTITIES FOR THESE ITEMS IS SHOWN ON THE REMOVAL PLANS.



TBM #2
NORTHEAST TOP FLANGE BOLT HEAD OF FIRE HYDRANT AT STA. 14+65.5 LT. ELEV.= 741.39

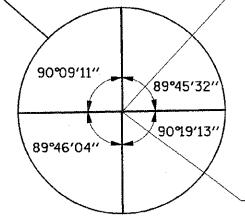
STORM AND SANITARY SEWER PIPE SCHEDULE - NEVADA ST.

CODE NO.	DESCRIPTION	UNIT	QUAN.
54248515	CONCRETE COLLAR	EACH	2
550A0040	STORM SEWERS, CLASS A, TYPE 1 10"	FOOT	7
59300100	CONTROLLED LOW-STRENGTH MATERIAL	CU YD	11.4
	STORM SEWERS, TYPE 3, WATER MAIN QUALITY PIPE, 12"	FOOT	6

STORM AND SANITARY SEWER STRUCTURE SCHEDULE - NEVADA ST.

CODE NO.	DESCRIPTION	UNIT	QUAN.
60224600	RESTRICTED DEPTH MANHOLES, 4'-DIAMETER, TYPE 1 FRAME, CLOSED LID	EACH	1
60236800	INLETS, TYPE A, TYPE 11 FRAME AND GRATE	EACH	1
	RESTRICTED DEPTH INLET TYPE B, TYPE 11 FRAME AND GRATE	EACH	1

ABANDON AND FILL EXISTING SANITARY MANHOLE
STA. 200+60.0, 0.2' LT.
RIM=735.95
INV.=730.4±
(PLUG PIPE, FILL MANHOLE WITH CLSM, REMOVE FRAME AND LID)



STA. 16+48.16 (Ⓞ GOODWIN AVE.) = STA. 200+00.00 (Ⓞ NEVADA ST.)

STA. 16+47.81 (Ⓞ GOODWIN AVE.) = STA. 200+00.00 (Ⓞ NEVADA ST.)

FILE NAME = p:\u0070052\plans\sheet127-Drainage.dgn
PLOT DATE = 2/27/2009 3:21:56 PM

DESIGNED - RLH
DRAWN - JRM
CHECKED - JAJ
DATE - 01-2009

REVISED -
REVISED -
REVISED -
REVISED -

STATE OF ILLINOIS
DEPARTMENT OF TRANSPORTATION

DRAINAGE PLAN

SCALE: 1"=10' SHEET NO. 27 OF 75 SHEETS STA. TO STA.

F.A.U. RITE.	SECTION	COUNTY	TOTAL SHEETS	SHEET NO.
7175	07-00456-00-RS	CHAMPAIGN	75	27

GOODWIN AVENUE CONTRACT NO. 91392
FED. ROAD DIST. NO. ILLINOIS FED. AID PROJECT