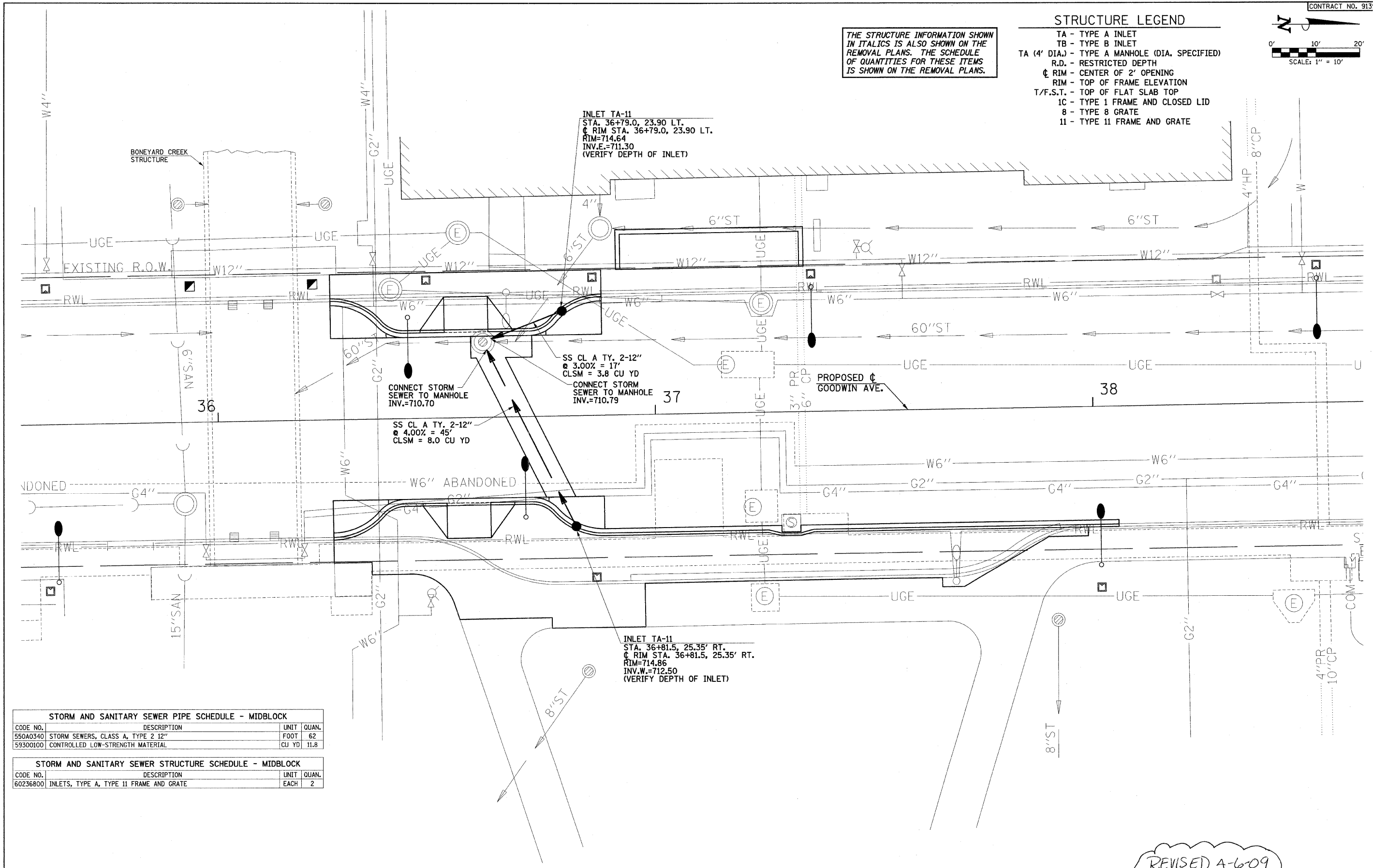


THE STRUCTURE INFORMATION SHOWN IN ITALICS IS ALSO SHOWN ON THE REMOVAL PLANS. THE SCHEDULE OF QUANTITIES FOR THESE ITEMS IS SHOWN ON THE REMOVAL PLANS.

- STRUCTURE LEGEND**
- TA - TYPE A INLET
 - TB - TYPE B INLET
 - TA (4' DIA.) - TYPE A MANHOLE (DIA. SPECIFIED)
 - R.D. - RESTRICTED DEPTH
 - ◊ - RIM - CENTER OF 2' OPENING
 - ◊ - RIM - TOP OF FRAME ELEVATION
 - T/F.S.T. - TOP OF FLAT SLAB TOP
 - 1C - TYPE 1 FRAME AND CLOSED LID
 - 8 - TYPE 8 GRATE
 - 11 - TYPE 11 FRAME AND GRATE



STORM AND SANITARY SEWER PIPE SCHEDULE - MIDBLOCK			
CODE NO.	DESCRIPTION	UNIT	QUAN.
550A0340	STORM SEWERS, CLASS A, TYPE 2 12"	FOOT	62
59300100	CONTROLLED LOW-STRENGTH MATERIAL	CU YD	11.8

STORM AND SANITARY SEWER STRUCTURE SCHEDULE - MIDBLOCK			
CODE NO.	DESCRIPTION	UNIT	QUAN.
60236800	INLETS, TYPE A, TYPE 11 FRAME AND GRATE	EACH	2

INLET TA-11
 STA. 36+79.0, 23.90 LT.
 ◊ RIM STA. 36+79.0, 23.90 LT.
 RIM=714.64
 INV.E.=711.30
 (VERIFY DEPTH OF INLET)

SS CL A TY. 2-12"
 @ 3.00% = 17'
 CLSM = 3.8 CU YD
 CONNECT STORM SEWER TO MANHOLE
 INV.=710.70

SS CL A TY. 2-12"
 @ 4.00% = 45'
 CLSM = 8.0 CU YD

INLET TA-11
 STA. 36+81.5, 25.35' RT.
 ◊ RIM STA. 36+81.5, 25.35' RT.
 RIM=714.86
 INV.W.=712.50
 (VERIFY DEPTH OF INLET)

REVISED 4-6-09

FILE NAME = p:\u0070052\plans\sheets\27-Drainage.dgn
 PLOT DATE = 2/27/2009 3:21:59 PM

DESIGNED - RLH	REVISED -
DRAWN - JRM	REVISED -
CHECKED - JAJ	REVISED -
DATE - 01-2009	REVISED -

STATE OF ILLINOIS
 DEPARTMENT OF TRANSPORTATION

DRAINAGE PLAN

SCALE: 1"=10' SHEET NO. 32 OF 75 SHEETS STA. TO STA.

F.A.U. RTE.	SECTION	COUNTY	TOTAL SHEETS	SHEET NO.
7175	07-00456-00-RS	CHAMPAIGN	75	32

GOODWIN AVENUE CONTRACT NO. 91392
 FED. ROAD DIST. NO. ILLINOIS FED. AID PROJECT