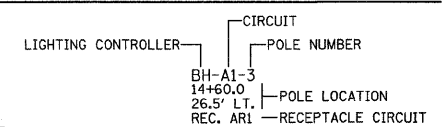


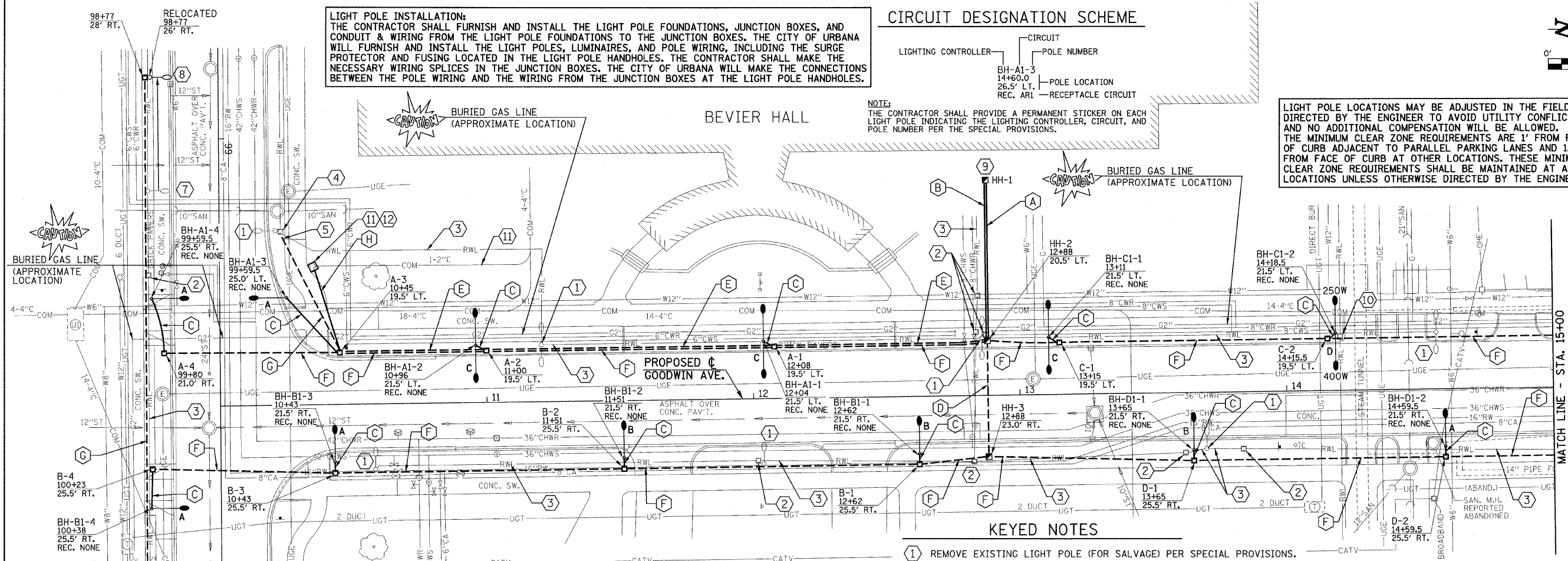
LIGHT POLE INSTALLATION:
THE CONTRACTOR SHALL FURNISH AND INSTALL THE LIGHT POLE FOUNDATIONS, JUNCTION BOXES, AND CONDUIT & WIRING FROM THE LIGHT POLE FOUNDATIONS TO THE JUNCTION BOXES. THE CITY OF URBANA WILL FURNISH AND INSTALL THE LIGHT POLES, LUMINAIRES, AND POLE WIRING, INCLUDING THE SURGE PROTECTOR AND FUSING LOCATED IN THE LIGHT POLE HANDHOLES. THE CONTRACTOR SHALL MAKE THE NECESSARY WIRING SPLICES IN THE JUNCTION BOXES. THE CITY OF URBANA WILL MAKE THE CONNECTIONS BETWEEN THE POLE WIRING AND THE WIRING FROM THE JUNCTION BOXES AT THE LIGHT POLE HANDHOLES.

CIRCUIT DESIGNATION SCHEME



NOTE:
THE CONTRACTOR SHALL PROVIDE A PERMANENT STICKER ON EACH LIGHT POLE INDICATING THE LIGHTING CONTROLLER, CIRCUIT, AND POLE NUMBER PER THE SPECIAL PROVISIONS.

LIGHT POLE LOCATIONS MAY BE ADJUSTED IN THE FIELD AS DIRECTED BY THE ENGINEER TO AVOID UTILITY CONFLICTS, AND NO ADDITIONAL COMPENSATION WILL BE ALLOWED. THE MINIMUM CLEAR ZONE REQUIREMENTS ARE 1' FROM FACE OF CURB ADJACENT TO PARALLEL PARKING LANES AND 1.5' FROM FACE OF CURB AT OTHER LOCATIONS. THESE MINIMUM CLEAR ZONE REQUIREMENTS SHALL BE MAINTAINED AT ALL LOCATIONS UNLESS OTHERWISE DIRECTED BY THE ENGINEER.



ELECTRICAL GENERAL NOTES

- ALL ELECTRICAL WORK SHALL CONFORM TO THE REQUIREMENTS OF THE 2008 NATIONAL ELECTRICAL CODE, THE ILLINOIS DEPARTMENT OF TRANSPORTATION "STANDARD SPECIFICATIONS FOR ROAD AND BRIDGE CONSTRUCTION", THE SPECIAL PROVISIONS, AND ALL APPLICABLE LOCAL ORDINANCES.
- THE CONTRACTOR SHALL FURNISH ALL MATERIALS REQUIRED FOR A COMPLETE AND OPERABLE SYSTEM EXCEPT FOR THE LIGHT POLES AND LUMINAIRES.
- THE CONTRACTOR SHALL BE RESPONSIBLE FOR OBTAINING ALL REQUIRED PERMITS AND FOR PROVIDING ALL SUPERVISION, LABOR, MATERIAL AND TOOLS FOR THE PROJECT.
- ALL LOCATIONS AND DIMENSIONS SHOWN ARE APPROXIMATE. THE CONTRACTOR SHALL FIELD VERIFY ALL ELECTRICAL EQUIPMENT LOCATIONS AND EQUIPMENT DIMENSIONS.
- ALL CONDUITS WITH WIRING SHALL BE PROVIDED WITH AN INSULATED COPPER GROUNDING CONDUCTOR SIZED IN ACCORDANCE WITH THE 2008 NATIONAL ELECTRICAL CODE.
- ALL SERVICE LATERAL CONDUITS SHALL BE SCHEDULE 40 PVC EXCEPT ALL ELBOWS AND VERTICAL RISERS INCLUDING ELBOWS WHICH SHALL BE RIGID GALVANIZED STEEL. ALL ELBOWS SHALL BE LONG RADIUS TYPE. THE SERVICE INSTALLATION AT BEVIER HALL WILL BE BY OTHERS.
- CONDUIT ROUTING SHOWN IS SCHEMATIC ONLY. CONTRACTOR SHALL COORDINATE EXACT ROUTING AND INSTALLATION WITH ALL OTHER SITE WORK BEING PERFORMED. COORDINATE ALL POLE LOCATIONS WITH ENGINEER IN FIELD.
- PROVIDE PULLSTRING IN ALL CONDUITS, INCLUDING CONDUITS WITH CONDUCTORS INSTALLED.
- ALL CONDUIT SHALL BE 30" BELOW FINAL GRADE UNLESS DIRECTED OTHERWISE BY THE ENGINEER. CONTRACTOR IS RESPONSIBLE FOR REPAIR TO ALL UNDERGROUND UTILITIES DAMAGED DURING INSTALLATION OF ROADWAY LIGHTING SYSTEM.
- GROUND RODS SHALL BE 3/4" DIA. X 10'-0" LONG COPPER CLAD STEEL. GROUNDING ELECTRODE CONDUCTORS SHALL BE #6 SOLID COPPER AND SHALL BE EXOTHERMICALLY WELDED TO GROUNDING ELECTRODE. GROUND ROD SHALL BE INSTALLED ONLY AT CONCRETE POLE FOUNDATIONS AND LIGHTING CONTROLLER.
- THE ELECTRIC CABLE FOR THE EXISTING ROADWAY LIGHTING SYSTEM SHALL BE REMOVED AT THE LOCATIONS SHOWN ON THE PLANS OR AS DIRECTED BY THE ENGINEER. THE ELECTRIC CABLE THAT IS REMOVED SHALL NOT BE REUSED. REFER TO THE SPECIAL PROVISION FOR "REMOVE EXISTING CABLE" FOR ADDITIONAL INFORMATION.
- THE CONTRACTOR SHALL USE CARE IN INSTALLING THE STEEL FOUNDATIONS FOR THE STREET LIGHTS THAT ARE NEAR TRENCH EXCAVATIONS FOR STORM SEWERS. THE CONTROLLED LOW-STRENGTH MATERIAL SHALL BE BLOCKED OUT AT THE FOUNDATION LOCATIONS TO ALLOW FOR THEIR LATER CONSTRUCTION.
- THE AUGERED CONDUITS MAY BE CONSTRUCTED IN TRENCHES PRIOR TO CONSTRUCTING PAVEMENTS WITH THE APPROVAL OF THE ENGINEER. THE CONDUITS WILL THEN BE PAID FOR AS CONDUIT IN TRENCH, OF THE SIZE SPECIFIED, ALONG WITH TRENCH AND BACKFILL WITH SCREENINGS OR SAND.
- EXISTING LIGHTING CONTROLLERS, OWNED BY THE CITY AND UNIVERSITY, SHALL BE DE-ENERGIZED BY THE OWNERS UPON PRIOR NOTICE BY THE CONTRACTOR PER THE SPECIAL PROVISIONS. EXISTING CONTROLLER REMOVAL SHALL BE BY THEIR RESPECTIVE OWNERS.

KEYED NOTES

- REMOVE EXISTING LIGHT POLE (FOR SALVAGE) PER SPECIAL PROVISIONS.
- REMOVE EXISTING JUNCTION BOX PER SPECIAL PROVISIONS.
- REMOVE CABLE FROM CONDUIT BACK TO ITS SOURCE PER SPECIAL PROVISIONS. CONDUIT AND DIRECT BURIED CABLES MAY BE ABANDONED IN PLACE IF THEY DO NOT INTERFERE WITH THE INSTALLATION OF NEW.
- THE EXISTING JUNCTION BOX WILL REMAIN IN SERVICE. IF BOX IS DAMAGED DURING POLE BASE REMOVAL IT SHALL BE REPLACED.
- EXTEND 2" CONDUIT INTO EXISTING JUNCTION BOX TO ALLOW FOR REFEEDING THE EXISTING LIGHTING CIRCUIT WEST ON GREGORY.
- EXISTING LIGHT POLE SHALL REMAIN. EXTEND NEW CONDUIT INTO POLE. EXISTING POLES ON SOUTH SIDE OF GREGORY ARE FED FROM FREER HALL.
- REMOVE EXISTING LIGHT POLE PER SPECIAL PROVISIONS FOR RELOCATION TO NEW LOCATION AS SHOWN. REMOVE CONDUCTORS TO LAST REMAINING LIGHT POLE IN BOTH DIRECTIONS. EXISTING POLES ON SOUTH SIDE OF GREGORY ARE FED FROM FREER HALL.
- EXPOSE EXISTING CONDUIT TO THE WEST AND REMOVE ENOUGH TO ALLOW FOR THE REINSTALLATION OF THE POLE. INSTALL NEW JUNCTION BOX AND EXTEND CONDUIT INTO JUNCTION BOX. REINSTALL LIGHT POLE AND INSTALL NEW WIRE (OF SAME TYPE AND SIZE AS WAS REMOVED) FROM LAST REMAINING POLES TO THE EAST AND WEST. RESTORE FINISHED GRADE TO MATCH SURROUNDING AREA. EXISTING POLES ON SOUTH SIDE OF GREGORY ARE FED FROM FREER HALL.
- LIGHTING SHALL BE FED FROM CONTROLLER BH (PROVIDED BY THE UNIVERSITY) INSIDE BEVIER HALL. THE CONTRACTOR SHALL STUB CONDUIT INTO HANDHOLE HH-1 10 FEET FROM BUILDING. THE UNIVERSITY SHALL PROVIDE CONDUIT AND THE CONDUCTORS FROM HH-1 INTO THE BUILDING TO THE CONTROLLER. THE UNIVERSITY SHALL PROVIDE (4) 20 AMP, 240V CIRCUITS AND (1) 20 AMP, 208V CIRCUIT FOR THE NEW LIGHTING AND THE EMERGENCY TELEPHONE LIGHT, AND CIRCUIT(S) AS REQUIRED TO REFEED THE EXISTING LIGHTING ON WEST GREGORY. THE UNIVERSITY SHALL PROVIDE ALL NECESSARY CONTROLLER EQUIPMENT TO PROVIDE DUSK TO DAWN OPERATION OF ROADWAY LIGHTING.
- EXISTING JUNCTION BOX TO REMAIN.
- THE EMERGENCY TELEPHONE KIOSK AND TELEPHONE CABLE WILL BE REMOVED AND REINSTALLED BY OTHERS.
- REMOVE CONCRETE FOUNDATION = 1 EACH. CONCRETE FOUNDATION, SPECIAL = 1 EACH (STA. 10+35.4, 51.7' LT.). INTERCEPT EXISTING 2" PVC CONDUIT FOR TELEPHONE CABLE AND PROVIDE NEW 1" CONDUIT FOR ELECTRIC CABLE.

CONDUIT/CABLE SCHEDULE

- (A) (1) 2" PVC CONDUIT WITH 8-#10, 4-#10 GND (4 CIRCUITS).
- (B) (1) 2" PVC CONDUIT WITH 2-#6, 2-#10, 1-#6 GND (2 CIRCUITS).
- (C) (1) 1 1/4" PVC CONDUIT WITH 2-#10, 1-#10 GND (1 CIRCUIT).
- (D) (1) 2" CONDUIT WITH 4-#10, 2-#10 GND (2 CIRCUITS).
- (E) (1) 2" CONDUIT WITH 2-#6, 2-#10, 1-#6 GND (2 CIRCUITS).
- (F) (1) 1 1/2" CONDUIT WITH 2-#10, 1-#10 GND (1 CIRCUIT).
- (G) (1) 2" CONDUIT WITH 2-#6, 1-#6 GND (1 CIRCUIT).
- (H) (1) 1" PVC CONDUIT WITH 2-#10, 1-#10 GND (1 CIRCUIT).

ROADWAY LIGHTING LEGEND

- PROPOSED LIGHTING CONTROLLER (X INDICATES CONTROLLER NUMBER).
- PROPOSED LIGHT POLE, 30' MOUNTING HEIGHT, 10' DAVIT ARM, WITH 400W LUMINAIRE (BY CITY OF URBANA).
- PROPOSED LIGHT POLE, 30' MOUNTING HEIGHT, 10' DAVIT ARM, WITH 250W LUMINAIRE (BY CITY OF URBANA).
- PROPOSED LIGHT POLE, 25' MOUNTING HEIGHT, 10' DAVIT ARM, WITH 250W LUMINAIRE (BY CITY OF URBANA).
- PROPOSED LIGHT POLE, 30' MOUNTING HEIGHT, TWIN 10' DAVIT ARMS, WITH TWO 250W LUMINAIRES (BY CITY OF URBANA).
- PROPOSED LIGHT POLE, 30' MOUNTING HEIGHT, TWIN 10' DAVIT ARMS, WITH ONE 250W LUMINAIRE AND ONE 400W LUMINAIRE (BY CITY OF URBANA).
- PROPOSED JUNCTION BOX, SPECIAL. ALL JUNCTION BOXES FOR ROADWAY LIGHTING SHALL BE 12"W x 12"L x 12"D UNLESS OTHERWISE NOTED.
- PROPOSED HANDHOLE, COMPOSITE CONCRETE PER HIGHWAY STANDARD 8140001. ALL HANDHOLES FOR ROADWAY LIGHTING SHALL BE 26"W x 26"L x 36"D.
- PROPOSED CONDUIT, BORED AND PULLED, COILABLE NON-METALLIC CONDUIT (SIZE AND QUANTITY AS NOTED).
- PROPOSED CONDUIT, SCHEDULE 40 PVC (SIZE AND QUANTITY AS NOTED).
- EXISTING LIGHT POLE.



PROFESSIONAL ENGINEER
CLARK DESIGN, INC.
FOR SHEETS 64-71
DATE: 2/27/2009
LICENSE EXPIRES 11-30-09

I CERTIFY THAT TO THE BEST OF MY KNOWLEDGE, INFORMATION, AND BELIEF, THIS LIGHTING DESIGN IS VISUALLY ADEQUATE FOR THE ROADWAY CLASSIFICATION AND GEOMETRY SHOWN ON THE PLANS. THE DESIGN IS AN ECONOMICAL ONE AND COMPLIES WITH REQUIREMENTS OF CHAPTER 56 OF THE BDE MANUAL.

FILE NAME = p:\u0070052\plans\sheet\64-Lighting.dgn
PLOT DATE = 2/27/2009 3:22:05 PM

DESIGNED - MTP	REVISED -
DRAWN - RJS	REVISED -
CHECKED - JUF	REVISED -
DATE - 01-2009	REVISED -

STATE OF ILLINOIS
DEPARTMENT OF TRANSPORTATION

ROADWAY LIGHTING PLAN

SCALE: 1"=20' SHEET NO. 64 OF 75 SHEETS STA. 10+00 TO STA. 15+00

F.A.U. R.T.E. 7175	SECTION 07-00456-00-RS	COUNTY CHAMPAIGN	TOTAL SHEETS 75	SHEET NO. 64
GOODWIN AVENUE		CONTRACT NO. 91392		
FED. ROAD DIST. NO.		ILLINOIS FED. AID PROJECT		