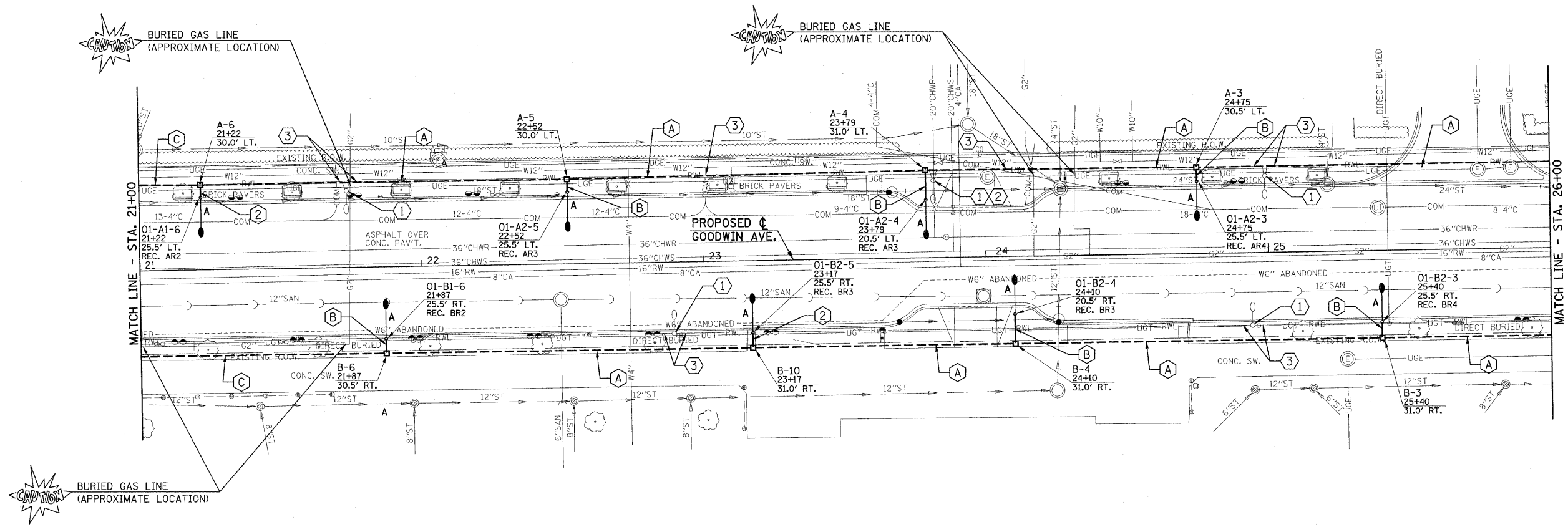


CONDUIT/CABLE SCHEDULE

- (A) (1) 2" CONDUIT WITH 4-#6, 1-#6 GND (2 LIGHTING CIRCUITS) AND 6-#8, 1-#8 GND (4 REC. CIRCUITS).
- (B) (1) 1 1/4" PVC CONDUIT WITH 2-#10, 1-#10 GND (1 LIGHTING CIRCUIT) AND 2#10, 1-#10 GND (1 REC. CIRCUITS).
- (C) (1) 2" CONDUIT WITH 4-#6, 1-#6 GND (2 LIGHTING CIRCUITS), 3-#8 (REC. CIRCUITS 2 & 4), 3-#10 (REC. CIRCUITS 1 & 3), AND 1-#8 GND (TOTAL 4 REC. CIRCUITS).



KEYED NOTES

- (1) REMOVE EXISTING LIGHT POLE (NO SALVAGE) AND FOUNDATION PER SPECIAL PROVISIONS.
- (2) DO NOT DISTURB GROUND WITHIN 3' OF LOCATION OF PROPOSED LIGHT TO ALLOW FOR THE INSTALLATION OF POLE BASE IN UNDISTURBED SOIL.
- (3) ABANDON EXISTING CABLE IN CONDUIT. ANY ABANDONED CABLE AND CONDUIT THAT INTERFERES WITH THE PROPOSED IMPROVEMENTS SHALL BE REMOVED AT THE POINT OF CONFLICT, AND NO ADDITIONAL COMPENSATION WILL BE ALLOWED.

REVISED 4-6-09

FILE NAME = p:\u0070052\plans\sheet\64-Lighting.dgn PLOT DATE = 2/27/2009 3:22:06 PM	DESIGNED - MTP DRAWN - RJS CHECKED - JJF DATE - 01-2009	REVISED - REVISED - REVISED - REVISED -	STATE OF ILLINOIS DEPARTMENT OF TRANSPORTATION	ROADWAY LIGHTING PLAN	F.A.U. RTE 7175	SECTION 07-00456-00-RS	COUNTY CHAMPAIGN	TOTAL SHEETS 75	SHEET NO. 66
	SCALE: 1"=20' SHEET NO. 66 OF 75 SHEETS STA. 21+00 TO STA. 26+00				GOODWIN AVENUE CONTRACT NO. 91392 FED. ROAD DIST. NO. ILLINOIS FED. AID PROJECT				