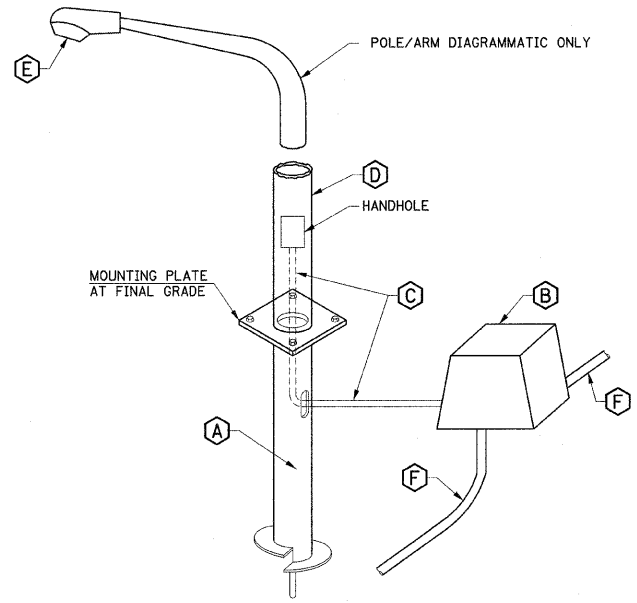


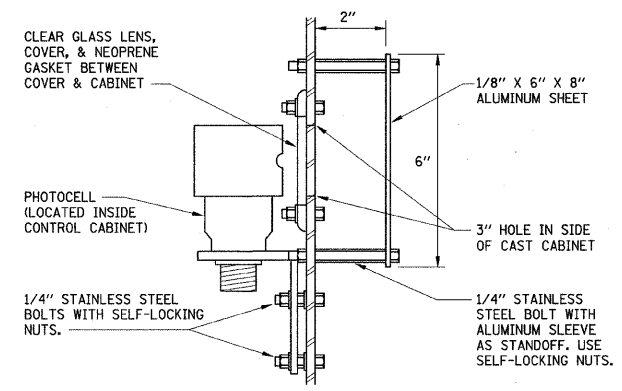
CODE NO.	ITEM	UNIT	QUANTITY	UNIVERSITY	CITY
80400105	ELECTRIC SERVICE INSTALLATION, SPECIAL	EACH	1		1
81012300	CONDUIT IN TRENCH, 1" DIA. PVC	FOOT	35	35	
81012400	CONDUIT IN TRENCH, 1/2" DIA. PVC	FOOT	410	100	310
81012600	CONDUIT IN TRENCH, 2" DIA., PVC	FOOT	120	120	
81012800	CONDUIT IN TRENCH, 3" DIA., PVC	FOOT	40		40
81028050	CONDUIT, BORED AND PULLED, COILABLE NON-METALLIC CONDUIT, 1/2"	FOOT	4140	1125	3015
81028060	CONDUIT, BORED AND PULLED, COILABLE NON-METALLIC CONDUIT, 2"	FOOT	2720	605	2115
81028080	CONDUIT, BORED AND PULLED, COILABLE NON-METALLIC CONDUIT, 3"	FOOT	55		55
81306100	JUNCTION BOX, SPECIAL (12"W x 12"L x 12"D)	EACH	72	15	57
81306500	REMOVE EXISTING JUNCTION BOX	EACH	23	9	14
81400730	HANDHOLE, COMPOSITE CONCRETE	EACH	7	3	4
81702110	ELECTRIC CABLE IN CONDUIT, 600V (XLP-TYPE USE) 1/C NO. 10	FOOT	19540	5920	13620
81702120	ELECTRIC CABLE IN CONDUIT, 600V (XLP-TYPE USE) 1/C NO. 8	FOOT	10925		10925
81702130	ELECTRIC CABLE IN CONDUIT, 600V (XLP-TYPE USE) 1/C NO. 6	FOOT	23400	1800	21600
81900200	TRENCH AND BACKFILL FOR ELECTRICAL WORK	FOOT	80	60	20
81900302	TRENCH AND BACKFILL WITH SCREENINGS OR SAND	FOOT	445	135	310
83600400	POLE FOUNDATION, METAL	EACH	61	14	47
84200500	REMOVAL OF EXISTING LIGHTING UNIT, SALVAGE	EACH	10	8	2
84200600	REMOVAL OF EXISTING LIGHTING UNIT, NO SALVAGE	EACH	30		30
84200700	LIGHTING FOUNDATION REMOVAL	EACH	30		30
84400105	RELOCATE EXISTING LIGHTING UNIT	EACH	2	1	1
X0325815	REMOVE EXISTING CABLE	FOOT	1900	1900	
X8250011	LIGHTING CONTROLLER, LOCATION NO. 1	L SUM	1		1
X8430100	REMOVE EXISTING CONDUIT ATTACHED TO STRUCTURE	FOOT	40		40
XX002943	CONCRETE FOUNDATION, SPECIAL	EACH	1	1	
XX004306	CONDUIT RIGID STEEL, PVC COATED, 2" ATTACHED TO STRUCTURE	FOOT	84		84
Z0050900	REMOVE CONCRETE FOUNDATION	EACH	1	1	



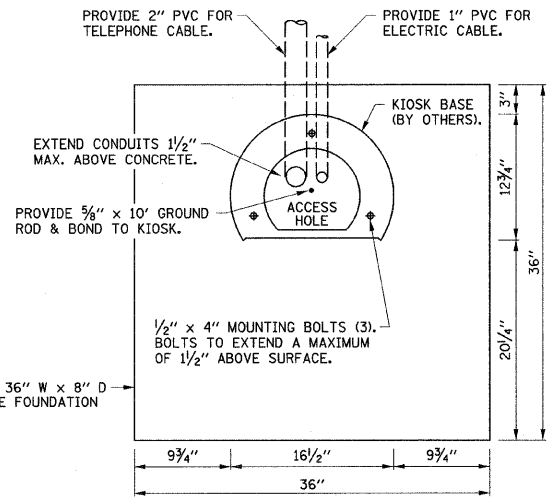
CONTROL CABINET, FOUNDATION AND DIAGRAMMATIC ASSEMBLY DETAIL LIGHTING CONTROLLER #01
NO SCALE

LIGHTING CONTROLLER #01 BILL OF MATERIALS

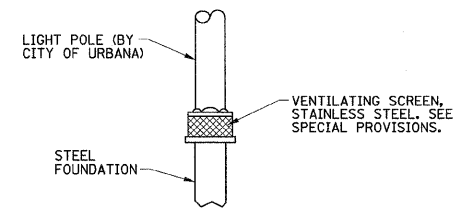
QTY	ITEM	DESCRIPTION
1	1	200A, 120/240V, 1Ø, 42 CIRCUIT PANELBOARD (INTERIOR ONLY, NO PANEL TUB), QUANTITY OF BREAKERS AS SHOWN IN PANELBOARD SCHEDULE
1	2	HAND-OFF-AUTO SELECTOR SWITCH WITH LEGEND PLATE.
1	3	120 VAC, 20A, 1P PLUNGERTYPE SWITCH FOR CONTROLLER LIGHT, DOOR ACTIVATED
1	4	INCANDESCENT LIGHT FIXTURE WITH CLEAR GLOBE AND PROTECTIVE GUARD. PROVIDE 60WATT, 130VAC LAMP.
1	5	PHOTOCELL SWITCH WITH LOCKING TYPE RECEPTACLE AND INTEGRAL SURGE ARRESTORS. PHOTOCELL SHALL BE CABINET MOUNTED AND SHIELDED FROM SURROUNDING LIGHT SOURCES, WITH TIME DELAY RELAY TO PREVENT NUISANCE SWITCHING. (SEE PHOTOCELL DETAIL).
1	6	DUPLX RECEPTACLE, 120VAC, 20A, GFCI TYPE.
1	7	TERMINAL STRIPS. QUANTITY AS REQUIRED FOR INCOMING WIRING PLUS 100% SPARE TERMINALS. PROVIDE SEPARATE TERMINAL STRIPS FOR POWER, NEUTRAL AND GROUND WIRING AS REQUIRED.
4	8	LIGHTING CONTACTOR, 30A, 240VAC, 4 POLE, 120VAC ELECTRICALLY HELD COIL. PROVIDE SPACE FOR ADDITIONAL CONTACTORS.
1	9	SURGE ARRESTOR
1	10	CONTROL WIRING TERMINAL BLOCK
1	11	ASTRONOMICAL TIME CLOCK WITH BATTERY MEMORY BACKUP TO CONTROL FESTOON RECEPTACLE "OFF" MODE (ON VIA PHOTOCELL)
3	12	RECEPTACLE CONTACTOR, 30A, 240VAC, 4 POLE, 120VAC ELECTRICALLY HELD COIL.



PHOTOCELL DETAIL
NO SCALE



CONCRETE FOUNDATION, SPECIAL DETAIL FOR EMERGENCY TELEPHONE KIOSK
NO SCALE



POLE/FOUNDATION DETAIL
NO SCALE

POLE/LUMINAIRE INSTALLATION DETAIL
NO SCALE

ELECTRICAL KEYNOTES

- A STEEL FOUNDATION - 6' LONG, 6-5/8" DIAMETER WITH THREADED HOLES FOR 1" BOLTS OR STUDS. A.B. CHANCE S112-0567 OR APPROVED EQUAL. COORDINATE BOLT CIRCLE DIAMETER WITH POLES BEING PROVIDED BY THE CITY OF URBANA.
- B CDR 12"W x 12"L x 12"D (UNLESS OTHERWISE INDICATED IN THE PLANS) FLARED WALL BOX WITH HEAVY DUTY COVER CAT.# PA22-1212-12-0062 OR APPROVED EQUAL.
- C 1/4" SCHEDULE 40 PVC FROM JUNCTION BOX TO 6" ABOVE BASE WITH WIRING AS NOTED ON PLANS. THE CITY OF URBANA WILL FURNISH AND INSTALL A TWO POLE FUSEHOLDER WITH FUSES PER IDOT STANDARD SPECIFICATION 1065.01 AND A SURGE PROTECTOR AT THE LOAD SIDE OF THE FUSE HOLDER PER IDOT STANDARD SPECIFICATION 1065.02.
- D ALUMINUM LIGHT POLE FURNISHED AND INSTALLED BY THE CITY OF URBANA.
- E METAL HALIDE LUMINAIRE FURNISHED AND INSTALLED BY THE CITY OF URBANA.
- F RACEWAY PER THE PLANS TO ADJACENT HANDHOLE OR 12" STUB FOR FUTURE EXTENSION OF LIGHTING CIRCUIT.

REVISED 4-6-09