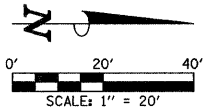


SEC. 18, T.19N., R.9E., 3rd P.M.  
CHAMPAIGN COUNTY, ILLINOIS



FOR THE COMB CC&G TB6.12 SPL, A 1-FOOT STUB SHALL BE CONSTRUCTED PERPENDICULAR TO THE SAWED EDGE OF EXISTING PAVEMENT AT THE LOCATIONS SHOWN ON THE PLANS. SEE THE TYPICAL SECTIONS FOR ADDITIONAL INFORMATION.

THE LIMITS OF SIDEWALK INSTALLATION, BRICK PAVEMENT INSTALLATION, AND SEEDING ARE NOT SHOWN FOR THE REMOVAL AND/OR INSTALLATION OF LIGHT POLES, JUNCTION BOXES, OR PARKING METERS. QUANTITIES FOR THIS WORK ARE INCLUDED ON THE PLANS.

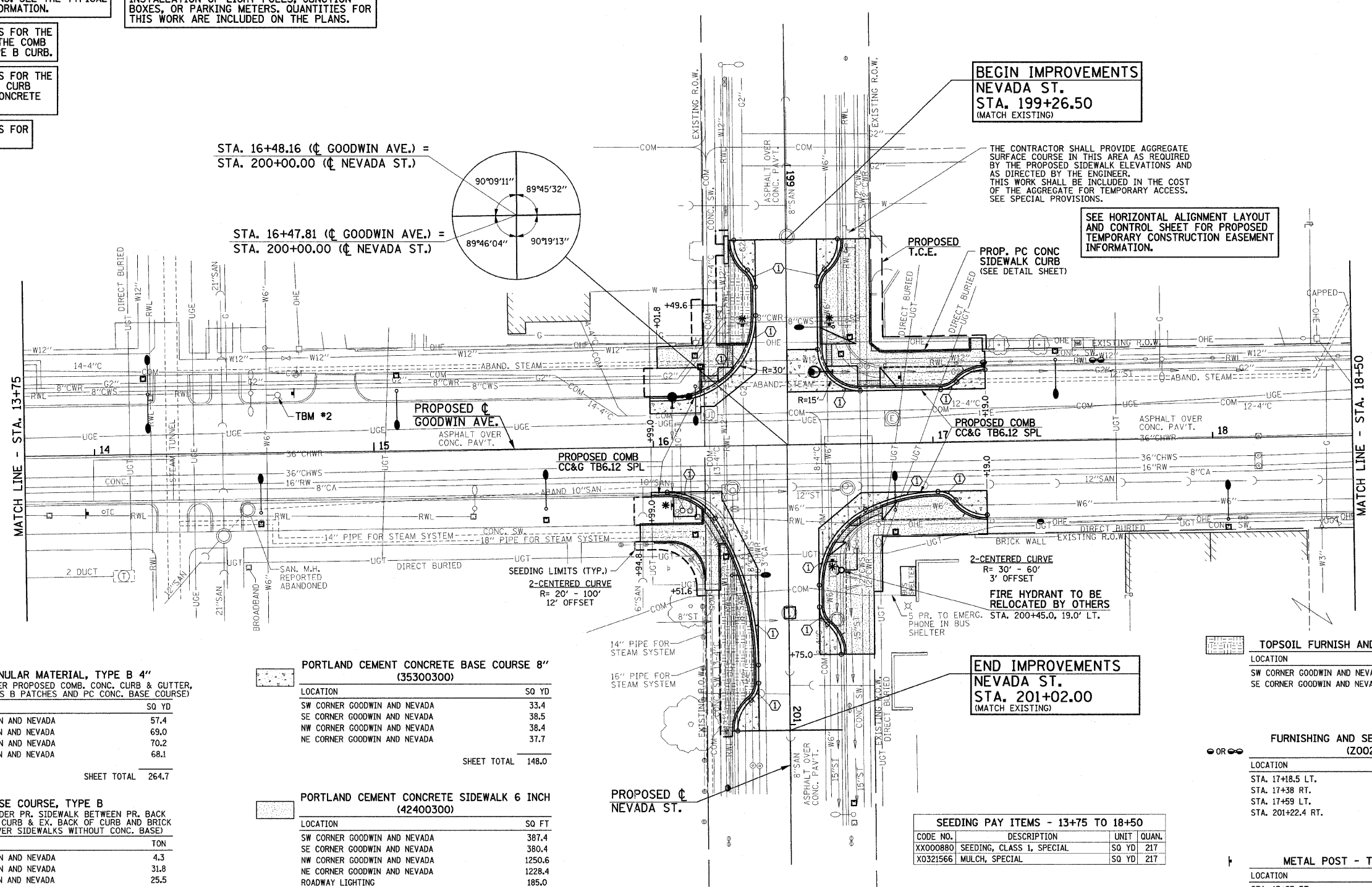
SEE THE INTERSECTION DETAILS FOR THE PROPOSED CURB HEIGHTS FOR THE COMB CC&G TB6.12 SPL AND THE TYPE B CURB.

SEE THE INTERSECTION DETAILS FOR THE LOCATIONS OF THE MONOLITHIC CURB ADJACENT TO THE PROPOSED CONCRETE SIDEWALK.

SEE THE INTERSECTION DETAILS FOR ADDITIONAL INFORMATION.

KEY NOTES

① 1' STUB



**SUB-BASE GRANULAR MATERIAL, TYPE B 4" (31101200)** (UNDER PROPOSED COMB. CONC. CURB & GUTTER, CLASS B PATCHES AND PC CONC. BASE COURSE)

LOCATION	SQ YD
SW CORNER GOODWIN AND NEVADA	57.4
SE CORNER GOODWIN AND NEVADA	69.0
NW CORNER GOODWIN AND NEVADA	70.2
NE CORNER GOODWIN AND NEVADA	68.1
<b>SHEET TOTAL</b>	<b>264.7</b>

**AGGREGATE BASE COURSE, TYPE B (35101400)** (UNDER PR. SIDEWALK BETWEEN PR. BACK OF CURB & EX. BACK OF CURB AND BRICK PAVEMENT SIDEWALKS WITHOUT CONC. BASE)

LOCATION	TON
SW CORNER GOODWIN AND NEVADA	4.3
NW CORNER GOODWIN AND NEVADA	31.8
NE CORNER GOODWIN AND NEVADA	25.5
STA. 16+58.0, 26.0' LT.	1.3
<b>SHEET TOTAL</b>	<b>62.9</b>

**COMBINATION CONCRETE CURB AND GUTTER, TYPE B-6.12 (SPECIAL) (60604200)**

LOCATION	FOOT
SW CORNER GOODWIN AND NEVADA	83.3
SE CORNER GOODWIN AND NEVADA	105.9
NW CORNER GOODWIN AND NEVADA	110.4
NE CORNER GOODWIN AND NEVADA	106.1
<b>SHEET TOTAL</b>	<b>405.7</b>

**PORTLAND CEMENT CONCRETE BASE COURSE 8" (35300300)**

LOCATION	SQ YD
SW CORNER GOODWIN AND NEVADA	33.4
SE CORNER GOODWIN AND NEVADA	38.5
NW CORNER GOODWIN AND NEVADA	38.4
NE CORNER GOODWIN AND NEVADA	37.7
<b>SHEET TOTAL</b>	<b>148.0</b>

**PORTLAND CEMENT CONCRETE SIDEWALK 6 INCH (42400300)**

LOCATION	SQ FT
SW CORNER GOODWIN AND NEVADA	387.4
SE CORNER GOODWIN AND NEVADA	380.4
NW CORNER GOODWIN AND NEVADA	1250.6
NE CORNER GOODWIN AND NEVADA	1228.4
ROADWAY LIGHTING	185.0
PARKING METER POSTS	40.0
<b>SHEET TOTAL</b>	<b>3471.8</b>

**DETECTABLE WARNINGS (42400800)**

LOCATION	SQ FT
SW CORNER GOODWIN AND NEVADA	28.0
SE CORNER GOODWIN AND NEVADA	24.5
NW CORNER GOODWIN AND NEVADA	32.0
NE CORNER GOODWIN AND NEVADA	34.1
<b>SHEET TOTAL</b>	<b>118.6</b>

**BEGIN IMPROVEMENTS**  
NEVADA ST.  
STA. 199+26.50  
(MATCH EXISTING)

THE CONTRACTOR SHALL PROVIDE AGGREGATE SURFACE COURSE IN THIS AREA AS REQUIRED BY THE PROPOSED SIDEWALK ELEVATIONS AND AS DIRECTED BY THE ENGINEER. THIS WORK SHALL BE INCLUDED IN THE COST OF THE AGGREGATE FOR TEMPORARY ACCESS. SEE SPECIAL PROVISIONS.

SEE HORIZONTAL ALIGNMENT LAYOUT AND CONTROL SHEET FOR PROPOSED TEMPORARY CONSTRUCTION EASEMENT INFORMATION.

**END IMPROVEMENTS**  
NEVADA ST.  
STA. 201+02.00  
(MATCH EXISTING)

**SEEDING PAY ITEMS - 13+75 TO 18+50**

CODE NO.	DESCRIPTION	UNIT	QUAN.
XX000880	SEEDING, CLASS 1, SPECIAL	SQ YD	217
X0321566	MULCH, SPECIAL	SQ YD	217

**PORTLAND CEMENT CONCRETE SIDEWALK CURB (Z0042300)**

LOCATION	FOOT
NW CORNER GOODWIN AND NEVADA	59.5
<b>SHEET TOTAL</b>	<b>59.5</b>

**TOPSOIL FURNISH AND PLACE, 6" (21101625)**

LOCATION	SQ YD
SW CORNER GOODWIN AND NEVADA	29
SE CORNER GOODWIN AND NEVADA	68
<b>SHEET TOTAL</b>	<b>97</b>

**FURNISHING AND SETTING STEEL POSTS (Z0026700)**

LOCATION	EACH
STA. 17+18.5 LT.	1
STA. 17+38 RT.	1
STA. 17+59 LT.	1
STA. 201+22.4 RT.	1
<b>SHEET TOTAL</b>	<b>4</b>

**METAL POST - TYPE B (72900200)**

LOCATION	FOOT
STA. 13+97 RT.	12
STA. 14+71 LT.	12
<b>SHEET TOTAL</b>	<b>24</b>

**WOOD SIGN SUPPORT (73000100) (STOP SIGN LOCATIONS)**

LOCATION	FOOT
STA. 16+06.5 RT.	12
STA. 16+88.5 LT.	12
STA. 199+57 LT. & RT.	24
STA. 200+41.5 LT.	12
<b>SHEET TOTAL</b>	<b>60</b>

**TBM #2**  
NORTHEAST TOP FLANGE BOLT HEAD OF FIRE HYDRANT AT STA. 14+65.5 LT. ELEV.= 741.39

FILE NAME = p:\u0070052\plans\sheets\19-SitePlan.dgn  
PLOT DATE = 1/23/2009 11:12:17 AM

DESIGNED - JAJ	REVISED -
DRAWN - JRM	REVISED -
CHECKED - RLH	REVISED -
DATE - 01-2009	REVISED -

STATE OF ILLINOIS  
DEPARTMENT OF TRANSPORTATION

SITE IMPROVEMENTS PLAN

SCALE: 1"=20' SHEET NO. 20 OF 75 SHEETS STA. 13+75 TO STA. 18+50

F.A.U. RTE.	SECTION	COUNTY	TOTAL SHEETS	SHEET NO.
7175	07-00456-00-RS	CHAMPAIGN	75	20
GOODWIN AVENUE		CONTRACT NO. 91392		
FED. ROAD DIST. NO.		ILLINOIS FED. AID PROJECT		