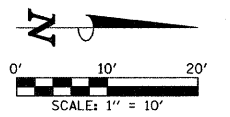
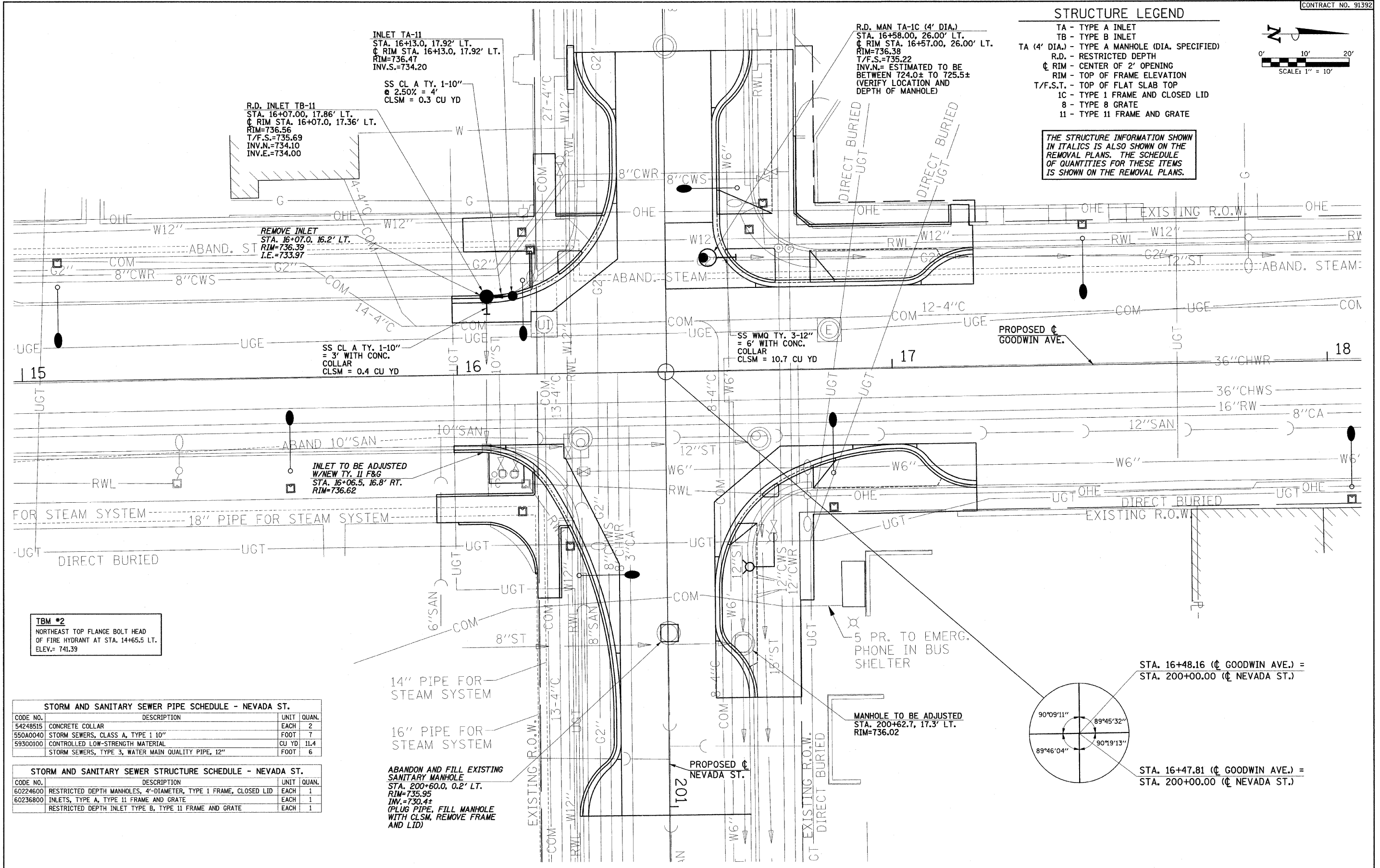


**STRUCTURE LEGEND**

- TA - TYPE A INLET
- TB - TYPE B INLET
- TA (4' DIA.) - TYPE A MANHOLE (DIA. SPECIFIED)
- R.D. - RESTRICTED DEPTH
- ◊ RIM - CENTER OF 2' OPENING
- RIM - TOP OF FRAME ELEVATION
- T/F.S.T. - TOP OF FLAT SLAB TOP
- 1C - TYPE 1 FRAME AND CLOSED LID
- 8 - TYPE 8 GRATE
- 11 - TYPE 11 FRAME AND GRATE



*THE STRUCTURE INFORMATION SHOWN IN ITALICS IS ALSO SHOWN ON THE REMOVAL PLANS. THE SCHEDULE OF QUANTITIES FOR THESE ITEMS IS SHOWN ON THE REMOVAL PLANS.*



**INLET TA-11**  
 STA. 16+13.0, 17.92' LT.  
 ◊ RIM STA. 16+13.0, 17.92' LT.  
 RIM=736.47  
 INV.S.=734.20

**R.D. INLET TB-11**  
 STA. 16+07.00, 17.86' LT.  
 ◊ RIM STA. 16+07.0, 17.36' LT.  
 RIM=736.56  
 T/F.S.=735.69  
 INV.N.=734.10  
 INV.E.=734.00

**R.D. MAN TA-1C (4' DIA.)**  
 STA. 16+58.00, 26.00' LT.  
 ◊ RIM STA. 16+57.00, 26.00' LT.  
 RIM=736.38  
 T/F.S.=735.22  
 INV.N.= ESTIMATED TO BE BETWEEN 724.0± TO 725.5±  
 (VERIFY LOCATION AND DEPTH OF MANHOLE)

**REMOVE INLET**  
 STA. 16+07.0, 16.2' LT.  
 RIM=736.39  
 I.E.=733.97

**SS CL A TY. 1-10"**  
 @ 2.50% = 4'  
 CLSM = 0.3 CU YD

**SS WMQ TY. 3-12"**  
 = 6' WITH CONC.  
 COLLAR  
 CLSM = 10.7 CU YD

**INLET TO BE ADJUSTED**  
 W/NEW TY. 11 F&G  
 STA. 16+06.5, 16.8' RT.  
 RIM=736.62

**TBM #2**  
 NORTHEAST TOP FLANGE BOLT HEAD  
 OF FIRE HYDRANT AT STA. 14+65.5 LT.  
 ELEV.= 741.39

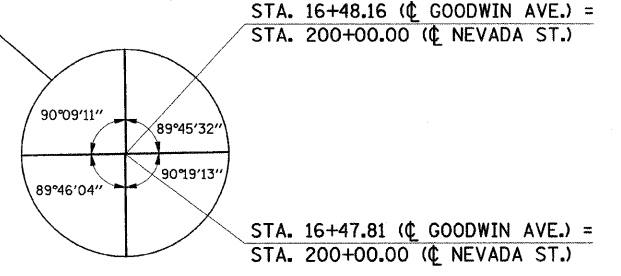
**STORM AND SANITARY SEWER PIPE SCHEDULE - NEVADA ST.**

CODE NO.	DESCRIPTION	UNIT	QUAN.
54248515	CONCRETE COLLAR	EACH	2
550A0040	STORM SEWERS, CLASS A, TYPE 1 10"	FOOT	7
59300100	CONTROLLED LOW-STRENGTH MATERIAL	CU YD	11.4
	STORM SEWERS, TYPE 3, WATER MAIN QUALITY PIPE, 12"	FOOT	6

**STORM AND SANITARY SEWER STRUCTURE SCHEDULE - NEVADA ST.**

CODE NO.	DESCRIPTION	UNIT	QUAN.
60224600	RESTRICTED DEPTH MANHOLES, 4'-DIAMETER, TYPE 1 FRAME, CLOSED LID	EACH	1
60236800	INLETS, TYPE A, TYPE 11 FRAME AND GRATE	EACH	1
	RESTRICTED DEPTH INLET TYPE B, TYPE 11 FRAME AND GRATE	EACH	1

**ABANDON AND FILL EXISTING SANITARY MANHOLE**  
 STA. 200+60.0, 0.2' LT.  
 RIM=735.95  
 INV.=730.4±  
 (PLUG PIPE, FILL MANHOLE WITH CLSM, REMOVE FRAME AND LID)



FILE NAME = p:\u0070052\plans\sheets\27-Drainage.dgn  
 PLOT DATE = 1/12/2009 7:46:31 PM

DESIGNED - RLH	REVISED -
DRAWN - JRM	REVISED -
CHECKED - JAJ	REVISED -
DATE - 01-2009	REVISED -

STATE OF ILLINOIS  
 DEPARTMENT OF TRANSPORTATION

**DRAINAGE PLAN**  
 SCALE: 1"=10'  
 SHEET NO. 27 OF 75 SHEETS  
 STA. TO STA.

F.A.I. RTE.	SECTION	COUNTY	TOTAL SHEETS	SHEET NO.
7175	07-00456-00-RS	CHAMPAIGN	75	27
GOODWIN AVENUE		CONTRACT NO. 91392		
FED. ROAD DIST. NO.		ILLINOIS FED. AID PROJECT		