

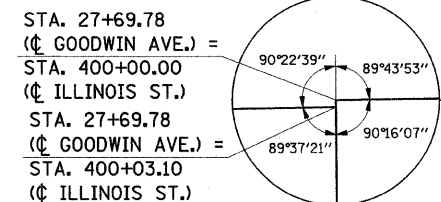
**STORM AND SANITARY SEWER PIPE SCHEDULE - ILLINOIS ST.**

CODE NO.	DESCRIPTION	UNIT	QUAN.
54248515	CONCRETE COLLAR	EACH	13
550A0050	STORM SEWERS, CLASS A, TYPE 1 12"	FOOT	74
550A0330	STORM SEWERS, CLASS A, TYPE 2 10"	FOOT	14
550A0340	STORM SEWERS, CLASS A, TYPE 2 12"	FOOT	8
550A0360	STORM SEWERS, CLASS A, TYPE 2 15"	FOOT	25
550A0660	STORM SEWERS, CLASS A, TYPE 3 15"	FOOT	4
550A0730	STORM SEWERS, CLASS A, TYPE 3 30"	FOOT	8
59300100	CONTROLLED LOW-STRENGTH MATERIAL	CU YD	115.2
X0321905	STORM SEWERS, TYPE 1, WATER MAIN QUALITY PIPE, 12"	FOOT	157
XX00774	CONCRETE ENCASUREMENTS	EACH	1
X0323200	SANITARY SEWER, DUCTILE IRON, 12"	FOOT	30

**STORM AND SANITARY SEWER STRUCTURE SCHEDULE - ILLINOIS ST.**

CODE NO.	DESCRIPTION	UNIT	QUAN.
60224600	RESTRICTED DEPTH MANHOLES, 4'-DIAMETER, TYPE I FRAME, CLOSED LID	EACH	1
60225910	RESTRICTED DEPTH MANHOLES, 5'-DIAMETER, TYPE II FRAME AND GRATE	EACH	1
60228600	MANHOLES, SPECIAL, WITH TYPE I FRAME, CLOSED LID	EACH	1
60236800	INLETS, TYPE A, TYPE II FRAME AND GRATE	EACH	4
60238700	INLETS, TYPE A, WITH SPECIAL FRAME AND GRATE	EACH	1

**TBM #4**  
NORTHEAST TOP FLANGE BOLT HEAD OF FIRE HYDRANT AT STA. 27+96.9 LT. ELEV.= 722.72



- ① MANHOLE TO BE ADJUSTED (SPECIAL) STA. 27+69.3, 14.3' RT. RIM=720.82
- ② MANHOLE TO BE ADJUSTED (SPECIAL) STA. 27+95.4, 17.0' RT. RIM=720.86

**STRUCTURE LEGEND**

- TA - TYPE A INLET
- TB - TYPE B INLET
- TA (4' DIA.) - TYPE A MANHOLE (DIA. SPECIFIED)
- R.D. - RESTRICTED DEPTH
- € RIM - CENTER OF 2' OPENING
- RIM - TOP OF FRAME ELEVATION
- T/F.S.T. - TOP OF FLAT SLAB TOP
- 1C - TYPE I FRAME AND CLOSED LID
- 8 - TYPE 8 GRATE
- 11 - TYPE 11 FRAME AND GRATE

THE STRUCTURE INFORMATION SHOWN IN ITALICS IS ALSO SHOWN ON THE REMOVAL PLANS. THE SCHEDULE OF QUANTITIES FOR THESE ITEMS IS SHOWN ON THE REMOVAL PLANS.

FILE NAME = p:\u0070052\plans\sheets\27-Drainage.dgn  
PLOT DATE = 1/12/2009 7:46:34 PM

DESIGNED - RLH  
DRAWN - JRM  
CHECKED - JAJ  
DATE - 01-2009

REVISED -  
REVISED -  
REVISED -  
REVISED -

STATE OF ILLINOIS  
DEPARTMENT OF TRANSPORTATION

**DRAINAGE PLAN**

SCALE: 1"=10' SHEET NO. 30 OF 75 SHEETS STA. TO STA.

F.A.U. RTE.	SECTION	COUNTY	TOTAL SHEETS	SHEET NO.
7175	07-00456-00-RS	CHAMPAIGN	75	30
GOODWIN AVENUE		CONTRACT NO. 91392		
FED. ROAD DIST. NO.		ILLINOIS FED. AID PROJECT		