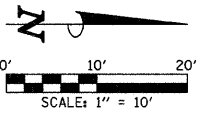
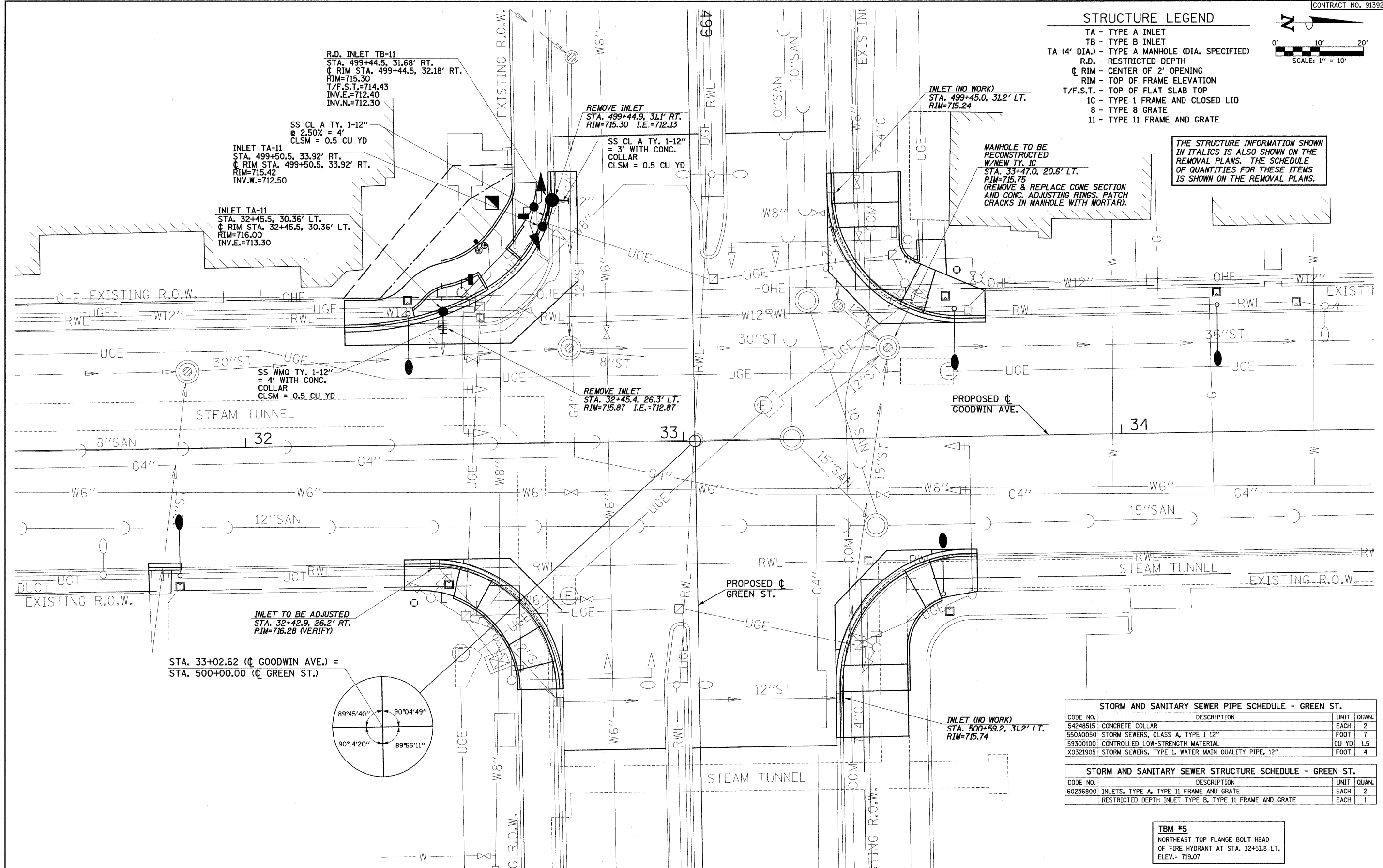


STRUCTURE LEGEND

- TA - TYPE A INLET
- TB - TYPE B INLET
- TA (4' DIA.) - TYPE A MANHOLE (DIA. SPECIFIED)
- R.D. - RESTRICTED DEPTH
- Q RIM - CENTER OF 2' OPENING
- RIM - TOP OF FRAME ELEVATION
- T/F.S.T. - TOP OF FLAT SLAB TOP
- 1C - TYPE 1 FRAME AND CLOSED LID
- 8 - TYPE 8 GRATE
- 11 - TYPE 11 FRAME AND GRATE



THE STRUCTURE INFORMATION SHOWN IN ITALICS IS ALSO SHOWN ON THE REMOVAL PLANS. THE SCHEDULE OF QUANTITIES FOR THESE ITEMS IS SHOWN ON THE REMOVAL PLANS.



STORM AND SANITARY SEWER PIPE SCHEDULE - GREEN ST.			
CODE NO.	DESCRIPTION	UNIT	QJAN.
54248515	CONCRETE COLLAR	EACH	2
550A0050	STORM SEWERS, CLASS A, TYPE 1 12"	FOOT	7
59300100	CONTROLLED LOW-STRENGTH MATERIAL	CU YD	1.5
X0321905	STORM SEWERS, TYPE 1, WATER MAIN QUALITY PIPE, 12"	FOOT	4

STORM AND SANITARY SEWER STRUCTURE SCHEDULE - GREEN ST.			
CODE NO.	DESCRIPTION	UNIT	QJAN.
60236800	INLETS, TYPE A, TYPE 11 FRAME AND GRATE	EACH	2
	RESTRICTED DEPTH INLET TYPE B, TYPE 11 FRAME AND GRATE	EACH	1

TBM #5
NORTHEAST TOP FLANGE BOLT HEAD OF FIRE HYDRANT AT STA. 32+51.8 LT. ELEV.= 719.07

FILE NAME = p:\u00700521\plans\sheets\27-Drainage.dgn
 PLOT DATE = 1/12/2009 7:46:36 PM

DESIGNED - RLH	REVISED -
DRAWN - JRM	REVISED -
CHECKED - JAJ	REVISED -
DATE - 01-2009	REVISED -

STATE OF ILLINOIS
DEPARTMENT OF TRANSPORTATION

DRAINAGE PLAN
SCALE: 1"=10'
SHEET NO. 31 OF 75 SHEETS
STA. TO STA.

F.A.U. RTE. 7175	SECTION 07-00456-00-RS	COUNTY CHAMPAIGN	TOTAL SHEETS 75	SHEET NO. 31
GOODWIN AVENUE		CONTRACT NO. 91392		
FED. ROAD DIST. NO. ILLINOIS		FED. AID PROJECT		