

EROSION CONTROL NOTES

1. THE TEMPORARY EROSION CONTROL SYSTEMS SHALL BE INSTALLED AND MAINTAINED BY THE CONTRACTOR AT THE LOCATIONS SHOWN ON THE STORM WATER POLLUTION PREVENTION PLAN AND AS DIRECTED BY THE ENGINEER. THE PLACEMENT OF THE TEMPORARY EROSION CONTROL SYSTEMS IS NECESSARY TO SATISFY THE REQUIREMENTS OF THE NPDES PERMIT. THE WORK SHALL BE IN ACCORDANCE WITH STANDARD 280001 AND SECTION 280 OF THE STANDARD SPECIFICATIONS.
2. ADDITIONAL TEMPORARY EROSION CONTROL SYSTEMS MAY BE REQUIRED DURING CONSTRUCTION. THE SYSTEMS SHALL BE PLACED AS DIRECTED BY THE ENGINEER AND SHALL BE PAID FOR IN ACCORDANCE WITH SECTION 280 OF THE STANDARD SPECIFICATIONS.
3. SEEDING AND LANDSCAPING OF DISTURBED EARTH AREAS SHALL BE DONE AS SOON AS POSSIBLE AFTER COMPLETION OF EACH STAGE OF THE PROJECT TO EXPEDITE THE ESTABLISHMENT OF VEGETATION.
4. SEE THE SITE IMPROVEMENTS PLANS FOR ADDITIONAL INFORMATION.

EROSION CONTROL SYSTEMS INSTALLATION SEQUENCE

1. REFER TO THE TRAFFIC CONTROL PLANS FOR ADDITIONAL INFORMATION.
2. INSTALL INLET FILTERS AT EXISTING DRAINAGE STRUCTURES PRIOR TO THE START OF WORK OR AS DIRECTED BY THE ENGINEER.
3. INSTALL INLET FILTERS AT PROPOSED DRAINAGE STRUCTURES AS SOON AS THE STRUCTURES HAVE BEEN CONSTRUCTED.
4. MAINTAIN ALL EROSION CONTROL SYSTEMS UNTIL SUCH TIME THAT THEY CAN BE REMOVED AS DIRECTED BY THE ENGINEER.
5. PLACE SEEDING AND LANDSCAPING AS SOON AS FINAL GRADING AND SHAPING IS COMPLETE.
6. REMOVE AND CLEANUP ALL REMAINING EROSION CONTROL SYSTEMS AS DIRECTED BY THE ENGINEER.

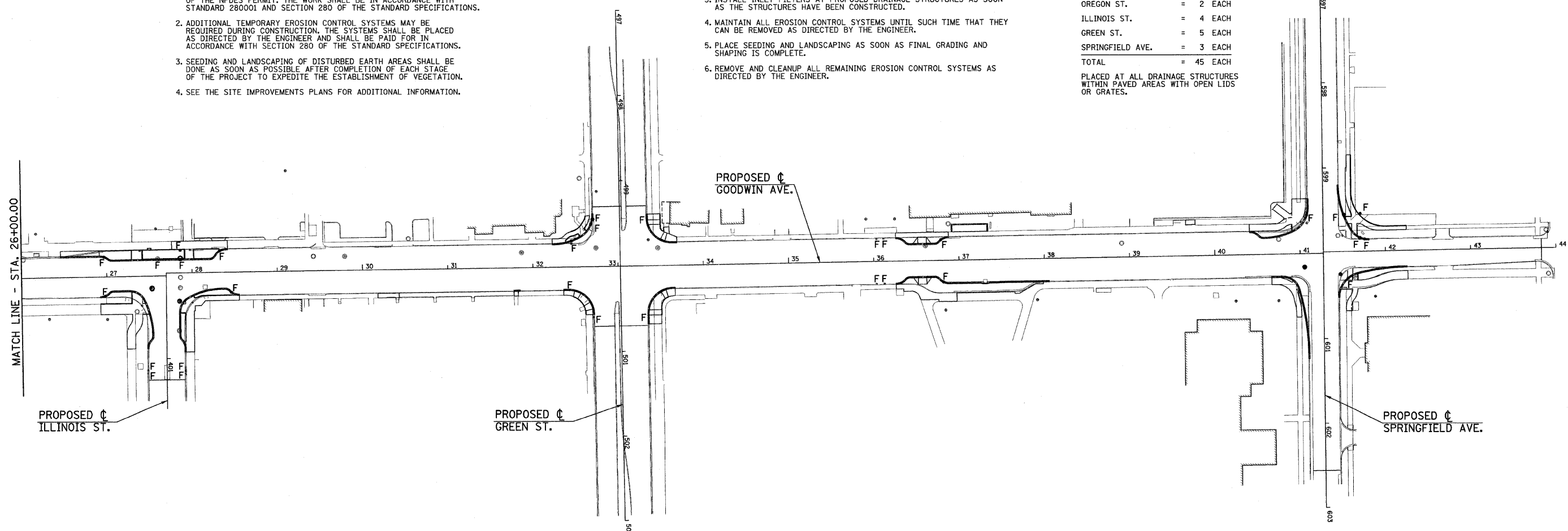
INLET FILTERS (28000510)

| | |
|------------------|------------------|
| GOODWIN AVE. | = 31 EACH |
| GREGORY DR. | = 0 EACH |
| NEVADA ST. | = 0 EACH |
| OREGON ST. | = 2 EACH |
| ILLINOIS ST. | = 4 EACH |
| GREEN ST. | = 5 EACH |
| SPRINGFIELD AVE. | = 3 EACH |
| TOTAL | = 45 EACH |

PLACED AT ALL DRAINAGE STRUCTURES WITHIN PAVED AREAS WITH OPEN LIDS OR GRATES.

LEGEND

F = INLET FILTER LOCATION



FILE NAME = p:\u0070052\plans\sheets\36-StormWaterPlan.dgn
 PLOT DATE = 1/12/2009 7:46:41 PM

| | |
|----------------|-----------|
| DESIGNED - JAJ | REVISED - |
| DRAWN - JRM | REVISED - |
| CHECKED - RLH | REVISED - |
| DATE - 01-2009 | REVISED - |

STATE OF ILLINOIS
 DEPARTMENT OF TRANSPORTATION

STORM WATER POLLUTION PREVENTION PLAN
 SCALE: 1"=60' SHEET NO. 36 OF 75 SHEETS STA. TO STA.

| | | | | |
|---------------------|------------------------|---------------------------|-----------------|--------------|
| F.A.U. RTE. 7175 | SECTION 07-00456-00-RS | COUNTY CHAMPAIGN | TOTAL SHEETS 75 | SHEET NO. 36 |
| GOODWIN AVENUE | | CONTRACT NO. 91392 | | |
| FED. ROAD DIST. NO. | | ILLINOIS FED. AID PROJECT | | |