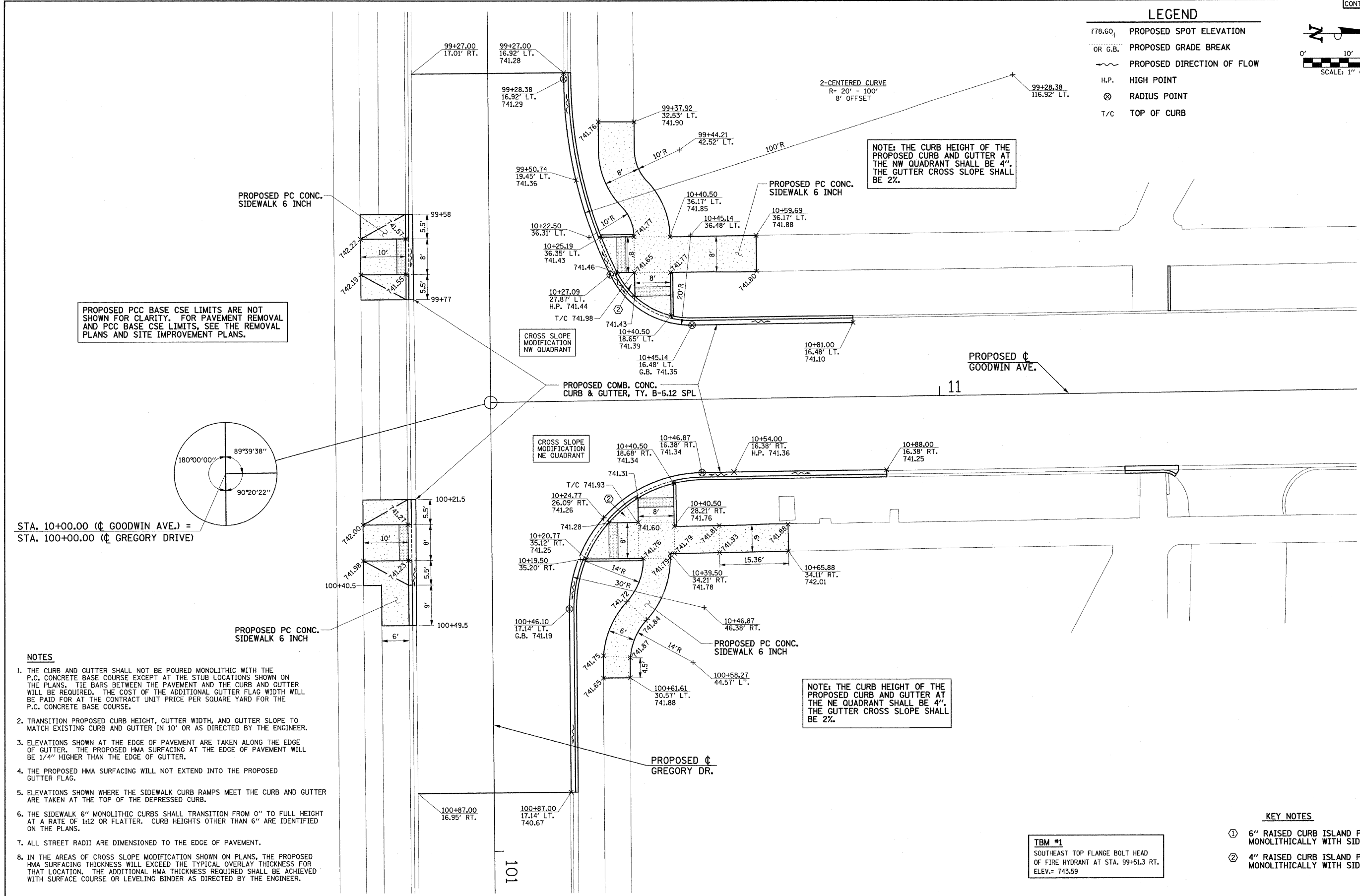
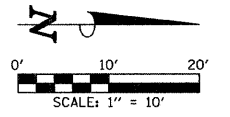


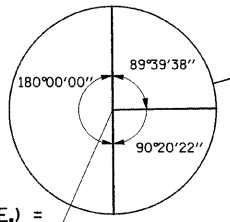
LEGEND

- 778.60 PROPOSED SPOT ELEVATION
- OR G.B. PROPOSED GRADE BREAK
- PROPOSED DIRECTION OF FLOW
- H.P. HIGH POINT
- ⊙ RADIUS POINT
- T/C TOP OF CURB



NOTE: THE CURB HEIGHT OF THE PROPOSED CURB AND GUTTER AT THE NW QUADRANT SHALL BE 4". THE GUTTER CROSS SLOPE SHALL BE 2%.

NOTE: THE CURB HEIGHT OF THE PROPOSED CURB AND GUTTER AT THE NE QUADRANT SHALL BE 4". THE GUTTER CROSS SLOPE SHALL BE 2%.



STA. 10+00.00 (☉ GOODWIN AVE.) =  
STA. 100+00.00 (☉ GREGORY DRIVE)

NOTES

1. THE CURB AND GUTTER SHALL NOT BE POURED MONOLITHIC WITH THE P.C. CONCRETE BASE COURSE EXCEPT AT THE STUB LOCATIONS SHOWN ON THE PLANS. TIE BARS BETWEEN THE PAVEMENT AND THE CURB AND GUTTER WILL BE REQUIRED. THE COST OF THE ADDITIONAL GUTTER FLAG WIDTH WILL BE PAID FOR AT THE CONTRACT UNIT PRICE PER SQUARE YARD FOR THE P.C. CONCRETE BASE COURSE.
2. TRANSITION PROPOSED CURB HEIGHT, GUTTER WIDTH, AND GUTTER SLOPE TO MATCH EXISTING CURB AND GUTTER IN 10' OR AS DIRECTED BY THE ENGINEER.
3. ELEVATIONS SHOWN AT THE EDGE OF PAVEMENT ARE TAKEN ALONG THE EDGE OF GUTTER. THE PROPOSED HMA SURFACING AT THE EDGE OF PAVEMENT WILL BE 1/4" HIGHER THAN THE EDGE OF GUTTER.
4. THE PROPOSED HMA SURFACING WILL NOT EXTEND INTO THE PROPOSED GUTTER FLAG.
5. ELEVATIONS SHOWN WHERE THE SIDEWALK CURB RAMPS MEET THE CURB AND GUTTER ARE TAKEN AT THE TOP OF THE DEPRESSED CURB.
6. THE SIDEWALK 6" MONOLITHIC CURBS SHALL TRANSITION FROM 0" TO FULL HEIGHT AT A RATE OF 1:12 OR FLATTER. CURB HEIGHTS OTHER THAN 6" ARE IDENTIFIED ON THE PLANS.
7. ALL STREET RADII ARE DIMENSIONED TO THE EDGE OF PAVEMENT.
8. IN THE AREAS OF CROSS SLOPE MODIFICATION SHOWN ON PLANS, THE PROPOSED HMA SURFACING THICKNESS WILL EXCEED THE TYPICAL OVERLAY THICKNESS FOR THAT LOCATION. THE ADDITIONAL HMA THICKNESS REQUIRED SHALL BE ACHIEVED WITH SURFACE COURSE OR LEVELING BINDER AS DIRECTED BY THE ENGINEER.

KEY NOTES

- ① 6" RAISED CURB ISLAND POURED MONOLITHICALLY WITH SIDEWALK
- ② 4" RAISED CURB ISLAND POURED MONOLITHICALLY WITH SIDEWALK

TBM #1  
SOUTHEAST TOP FLANGE BOLT HEAD  
OF FIRE HYDRANT AT STA. 99+51.3 RT.  
ELEV.= 743.59

FILE NAME = p:\u0070052\plans\sheets\37-Intersection.dgn	DESIGNED - JAJ	REVISED -
PLOT DATE = 1/12/2009 7:48:44 PM	DRAWN - JRM	REVISED -
	CHECKED - RLH	REVISED -
	DATE - 01-2009	REVISED -

DESIGNED - JAJ	REVISED -
DRAWN - JRM	REVISED -
CHECKED - RLH	REVISED -
DATE - 01-2009	REVISED -

STATE OF ILLINOIS  
DEPARTMENT OF TRANSPORTATION

INTERSECTION DETAILS

SCALE: 1"=10' SHEET NO. 37 OF 75 SHEETS STA. TO STA.

F.A.U. RTE.	SECTION	COUNTY	TOTAL SHEETS	SHEET NO.
7175	07-00456-00-RS	CHAMPAIGN	75	37
GOODWIN AVENUE		CONTRACT NO. 91392		
FED. ROAD DIST. NO.		ILLINOIS FED. AID PROJECT		