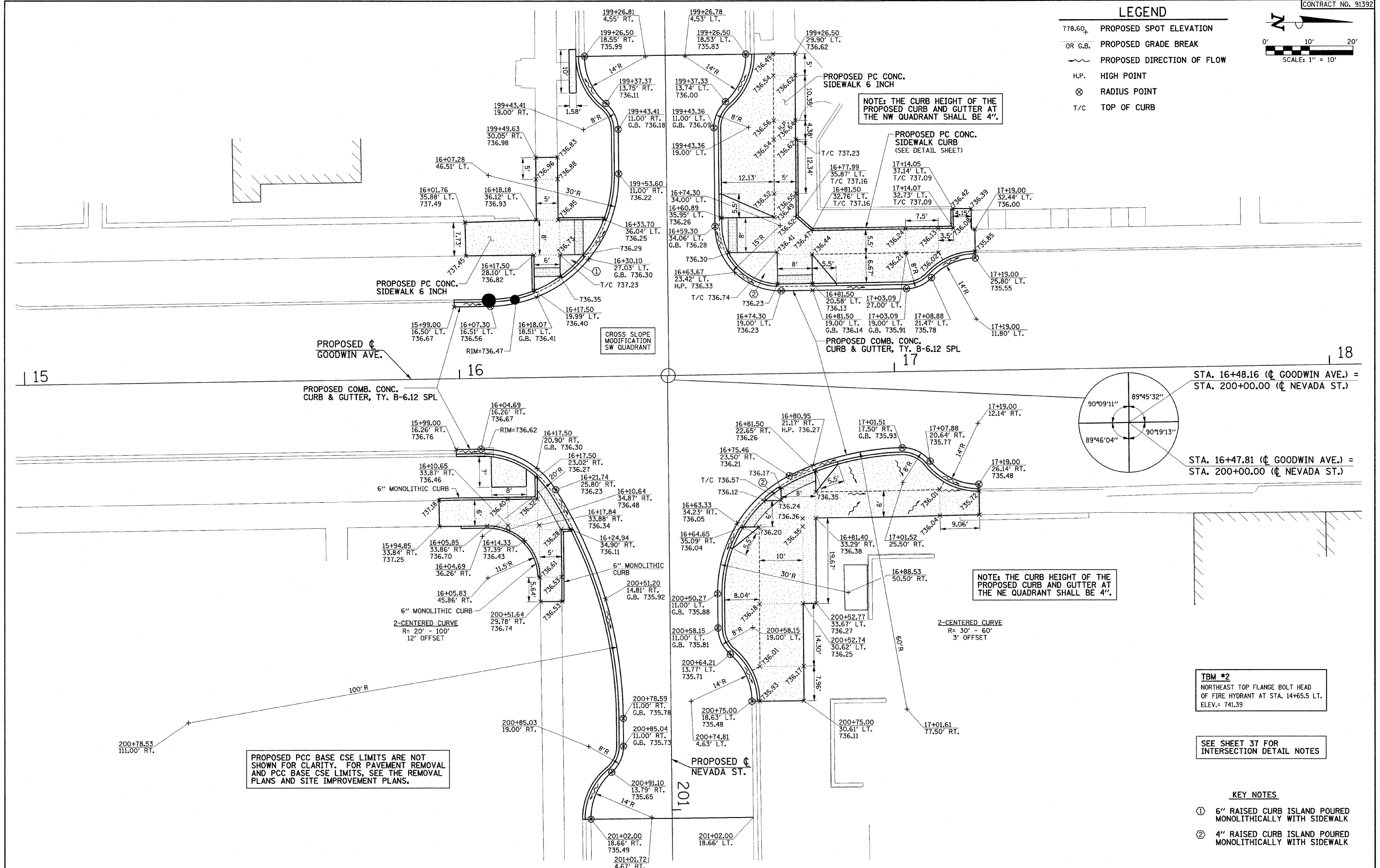
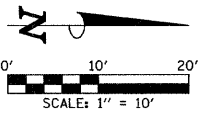


LEGEND

- 778.60. PROPOSED SPOT ELEVATION
- OR G.B. PROPOSED GRADE BREAK
- ~ PROPOSED DIRECTION OF FLOW
- H.P. HIGH POINT
- ⊗ RADIUS POINT
- T/C TOP OF CURB



PROPOSED PCC BASE CSE LIMITS ARE NOT SHOWN FOR CLARITY. FOR PAVEMENT REMOVAL AND PCC BASE CSE LIMITS, SEE THE REMOVAL PLANS AND SITE IMPROVEMENT PLANS.

NOTE: THE CURB HEIGHT OF THE PROPOSED CURB AND GUTTER AT THE NE QUADRANT SHALL BE 4\"/>

TBM #2
NORTHEAST TOP FLANGE BOLT HEAD OF FIRE HYDRANT AT STA. 14+65.5 LT. ELEV.= 741.39

SEE SHEET 37 FOR INTERSECTION DETAIL NOTES

KEY NOTES

- ① 6" RAISED CURB ISLAND POURED MONOLITHICALLY WITH SIDEWALK
- ② 4" RAISED CURB ISLAND POURED MONOLITHICALLY WITH SIDEWALK

FILE NAME = p:\u0070052\plans\sheets\37-Intersection.dgn	DESIGNED - JAJ	REVISED -
PLOT DATE = 1/12/2009 7:46:46 PM	DRAWN - JRM	REVISED -
	CHECKED - RLH	REVISED -
	DATE - 01-2009	REVISED -

STATE OF ILLINOIS DEPARTMENT OF TRANSPORTATION

STATE OF ILLINOIS DEPARTMENT OF TRANSPORTATION	
SCALE: 1"=10'	SHEET NO. 38 OF 75 SHEETS
STA.	TO STA.

INTERSECTION DETAILS				
F.A.U. RTE. 7175	SECTION 07-00456-00-RS	COUNTY CHAMPAIGN	TOTAL SHEETS 75	SHEET NO. 38
GOODWIN AVENUE		CONTRACT NO. 91392		
FED. ROAD DIST. NO.		ILLINOIS FED. AID PROJECT		