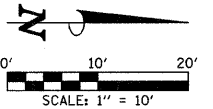


LEGEND

- 778.60<sub>+</sub> PROPOSED SPOT ELEVATION
- OR G.B. PROPOSED GRADE BREAK
- ~ PROPOSED DIRECTION OF FLOW
- H.P. HIGH POINT
- ⊗ RADIUS POINT
- T/C TOP OF CURB



NOTE: THE CURB HEIGHT OF THE PROPOSED CURB AND GUTTER AT THE NW QUADRANT SHALL BE 4".

NOTE: THE CURB HEIGHT OF THE PROPOSED CURB AND GUTTER AT THE SW QUADRANT SHALL BE 4".

PROPOSED CONCRETE CURB (SPECIAL) (SEE DETAIL SHEET)

PROPOSED PC CONC. SIDEWALK 6 INCH

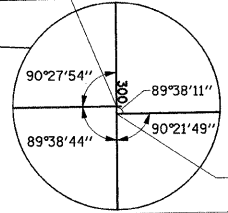
PROPOSED BRICK PAVER SIDEWALK (SEE DETAIL SHEET)

PROPOSED  $\phi$  GOODWIN AVE.

20

21

STA. 20+21.10 ( $\phi$  GOODWIN AVE.) = STA. 300+00.00 ( $\phi$  OREGON ST.)



STA. 20+21.10 ( $\phi$  GOODWIN AVE.) = STA. 300+03.33 ( $\phi$  OREGON ST.)

PROPOSED COMB. CONC. CURB & GUTTER, TY. B-6.12 SPL

PROPOSED COMB. CONC. CURB & GUTTER, TY. B-6.12 SPL

PROPOSED PC CONC. SIDEWALK 6 INCH

NOTE: THE CURB HEIGHT OF THE PROPOSED CURB AND GUTTER AT THE SE QUADRANT SHALL BE 4".

NOTE: THE CURB HEIGHT OF THE PROPOSED CURB AND GUTTER AT THE NE QUADRANT SHALL BE 4".

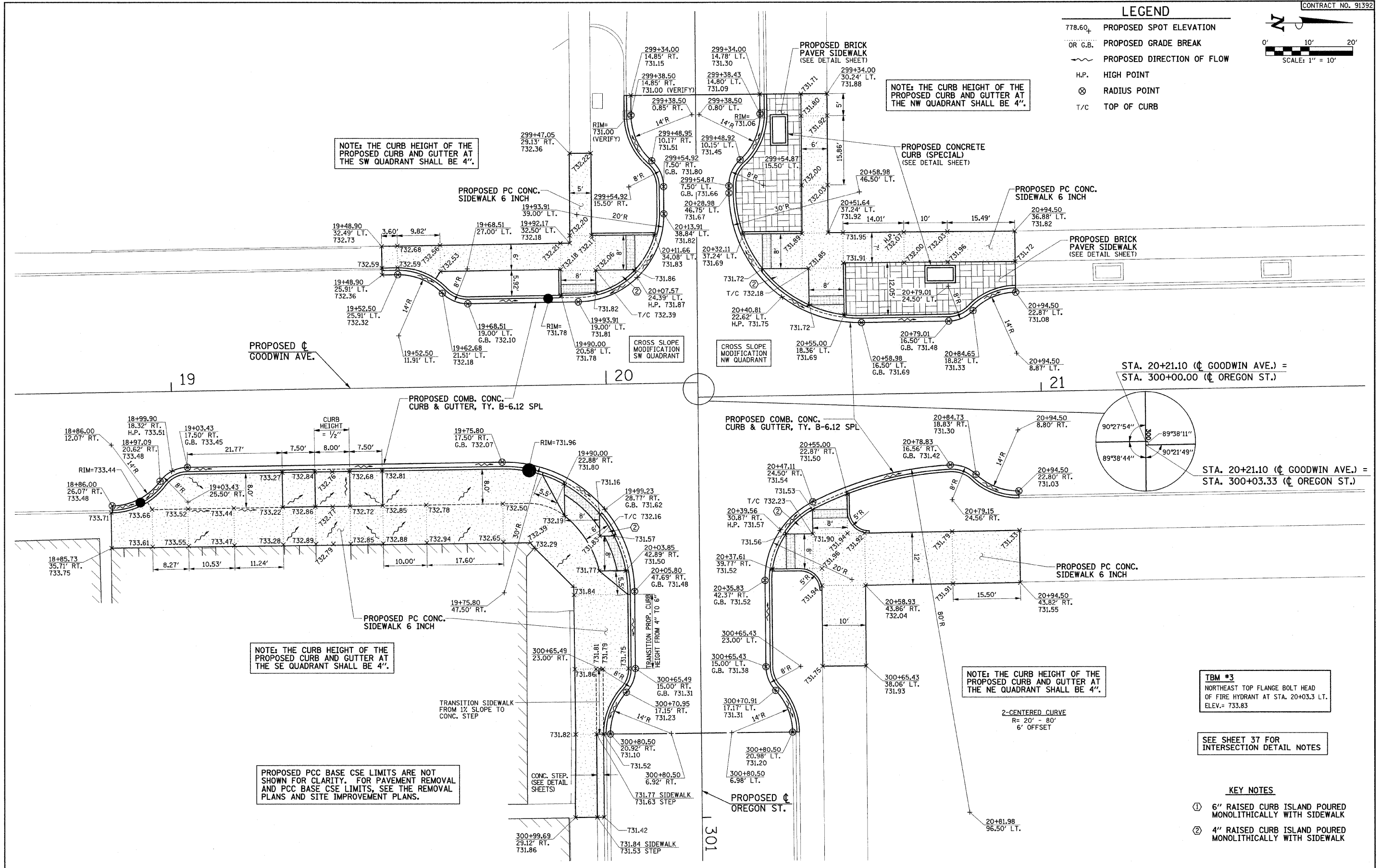
PROPOSED PCC BASE CSE LIMITS ARE NOT SHOWN FOR CLARITY. FOR PAVEMENT REMOVAL AND PCC BASE CSE LIMITS, SEE THE REMOVAL PLANS AND SITE IMPROVEMENT PLANS.

**TBM #3**  
NORTHEAST TOP FLANGE BOLT HEAD OF FIRE HYDRANT AT STA. 20+03.3 LT. ELEV.= 733.83

SEE SHEET 37 FOR INTERSECTION DETAIL NOTES

KEY NOTES

- ① 6" RAISED CURB ISLAND POURED MONOLITHICALLY WITH SIDEWALK
- ② 4" RAISED CURB ISLAND POURED MONOLITHICALLY WITH SIDEWALK



FILE NAME = p:\u0070052\plans\sheet\37-Intersection.dgn  
 PLOT DATE = 1/12/2009 7:46:47 PM

DESIGNED - JAJ	REVISED -
DRAWN - JRM	REVISED -
CHECKED - RLH	REVISED -
DATE - 01-2009	REVISED -

STATE OF ILLINOIS  
DEPARTMENT OF TRANSPORTATION

INTERSECTION DETAILS  
SCALE: 1"=10' SHEET NO. 39 OF 75 SHEETS STA. TO STA.

F.A.U. RTE.	SECTION	COUNTY	TOTAL SHEETS	SHEET NO.
7175	07-00456-00-RS	CHAMPAIGN	75	39
GOODWIN AVENUE		CONTRACT NO. 91392		
FED. ROAD DIST. NO.	ILLINOIS	FED. AID PROJECT		