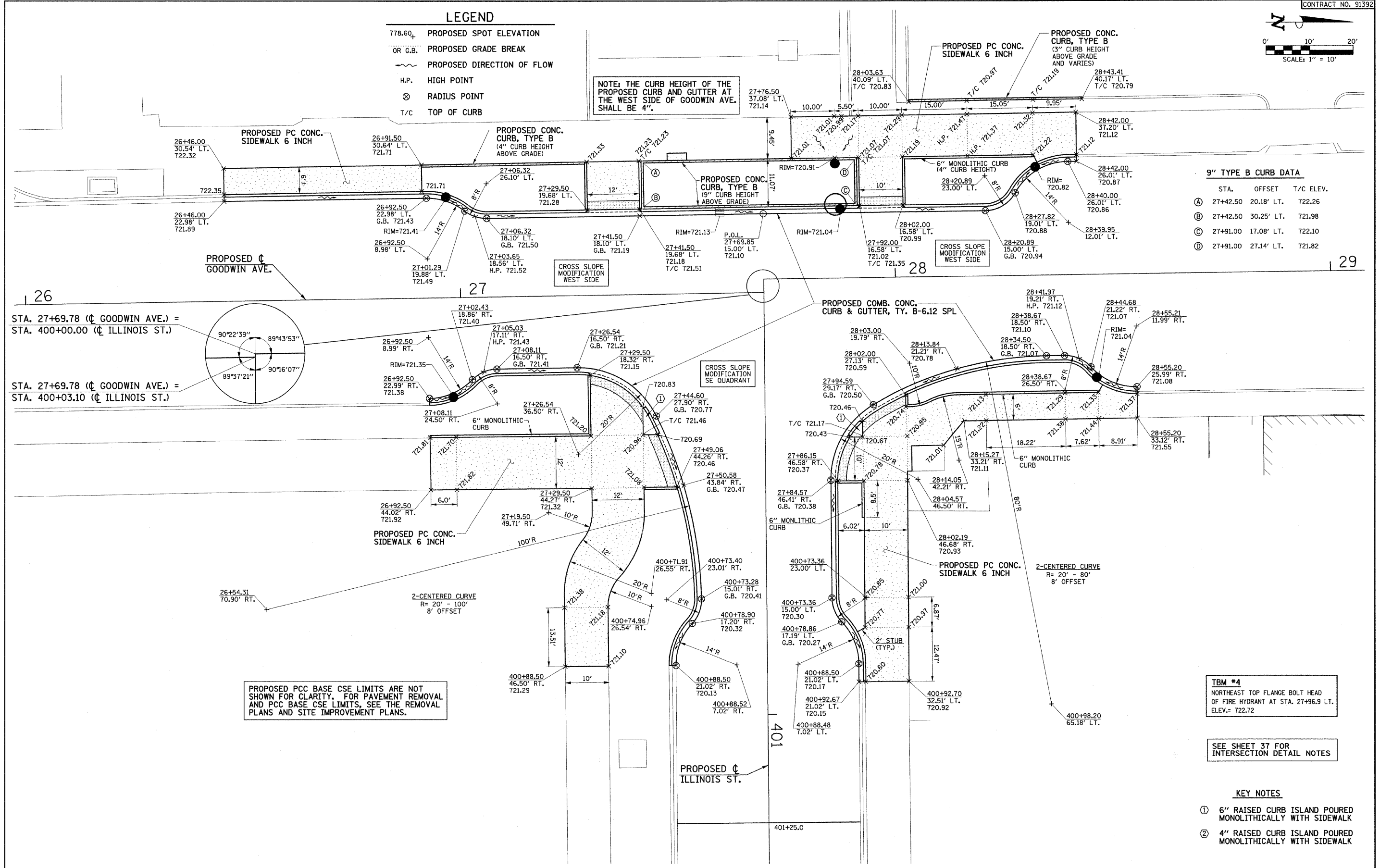


LEGEND

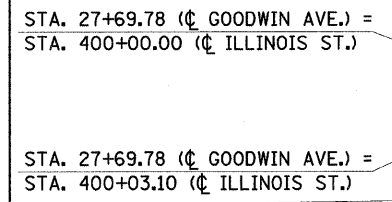
- 778.60₊ PROPOSED SPOT ELEVATION
- OR G.B. PROPOSED GRADE BREAK
- ~ PROPOSED DIRECTION OF FLOW
- H.P. HIGH POINT
- ⊗ RADIUS POINT
- T/C TOP OF CURB

NOTE: THE CURB HEIGHT OF THE PROPOSED CURB AND GUTTER AT THE WEST SIDE OF GOODWIN AVE. SHALL BE 4".



9" TYPE B CURB DATA

STA.	OFFSET	T/C ELEV.
(A)	27+42.50 20.18' LT.	722.26
(B)	27+42.50 30.25' LT.	721.98
(C)	27+91.00 17.08' LT.	722.10
(D)	27+91.00 27.14' LT.	721.82



PROPOSED PCC BASE CSE LIMITS ARE NOT SHOWN FOR CLARITY. FOR PAVEMENT REMOVAL AND PCC BASE CSE LIMITS, SEE THE REMOVAL PLANS AND SITE IMPROVEMENT PLANS.

TBM #4
NORTHEAST TOP FLANGE BOLT HEAD OF FIRE HYDRANT AT STA. 27+96.9 LT. ELEV. = 722.72

SEE SHEET 37 FOR INTERSECTION DETAIL NOTES

- KEY NOTES**
- ① 6" RAISED CURB ISLAND Poured MONOLITHICALLY WITH SIDEWALK
 - ② 4" RAISED CURB ISLAND Poured MONOLITHICALLY WITH SIDEWALK

FILE NAME = p:\u0070052\plans\sheet\37-Intersection.dgn	DESIGNED - JAJ	REVISED -
PLOT DATE = 1/12/2009 7:48:49 PM	DRAWN - JRM	REVISED -
	CHECKED - RLH	REVISED -
	DATE - 01-2009	REVISED -

STATE OF ILLINOIS DEPARTMENT OF TRANSPORTATION

INTERSECTION DETAILS
SCALE: 1"=10'
SHEET NO. 41 OF 75 SHEETS
STA. TO STA.

F.A.U. RTE.	SECTION	COUNTY	TOTAL SHEETS	SHEET NO.
7175	07-00456-00-RS	CHAMPAIGN	75	41
GOODWIN AVENUE		CONTRACT NO. 91392		
FED. ROAD DIST. NO.		ILLINOIS FED. AID PROJECT		