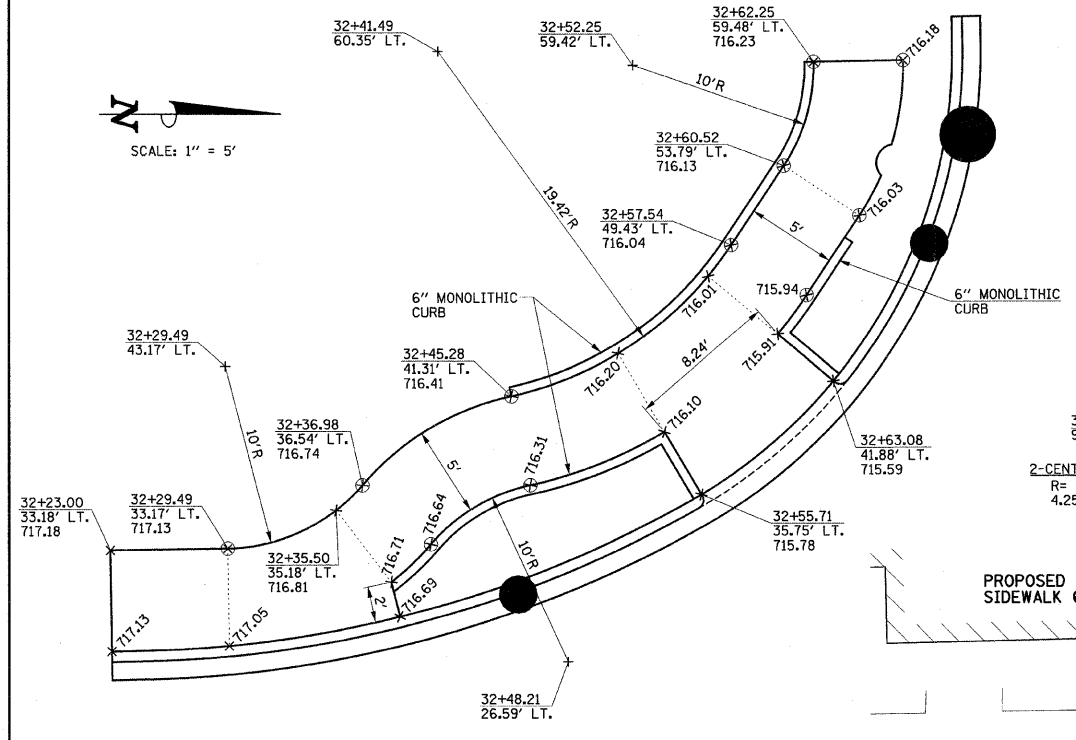
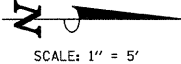
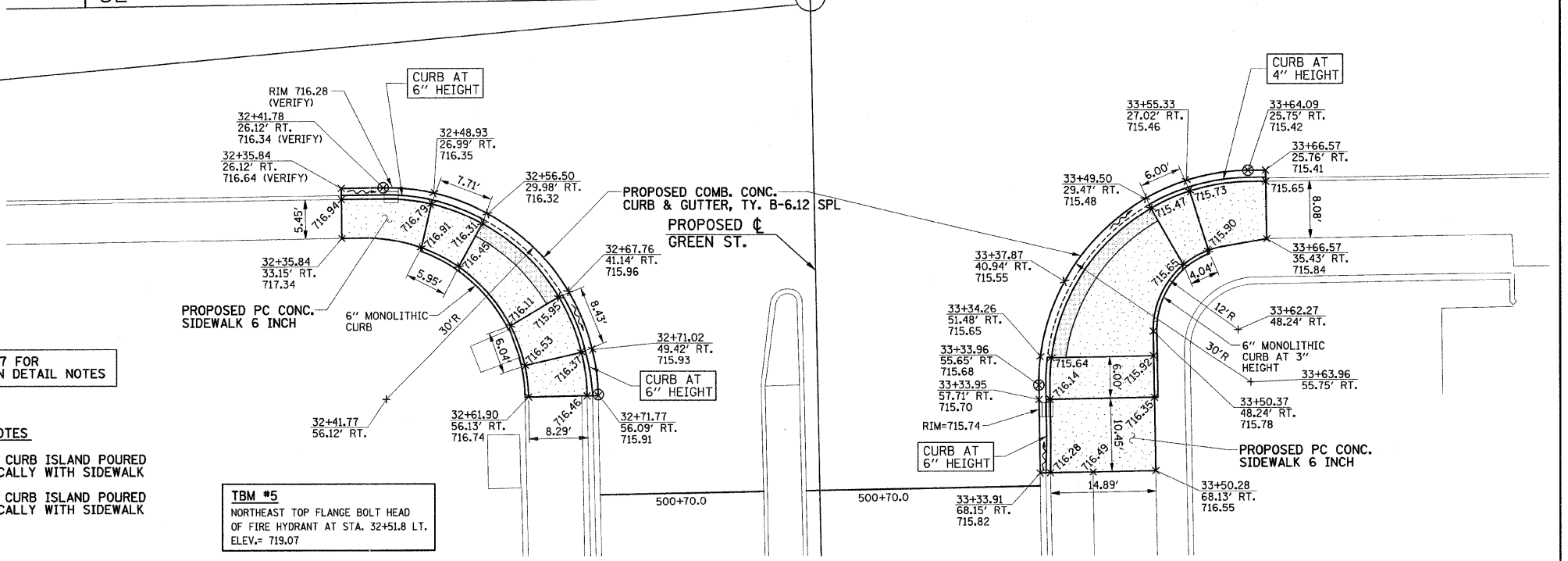
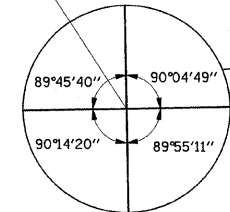


PROPOSED PCC BASE CSE LIMITS ARE NOT SHOWN FOR CLARITY. FOR PAVEMENT REMOVAL AND PCC BASE CSE LIMITS, SEE THE REMOVAL PLANS AND SITE IMPROVEMENT PLANS.



DETAIL A

STA. 33+02.62 (¢ GOODWIN AVE.) = STA. 500+00.00 (¢ GREEN ST.)



LEGEND

778.60 ₊	PROPOSED SPOT ELEVATION
OR G.B.	PROPOSED GRADE BREAK
~	PROPOSED DIRECTION OF FLOW
H.P.	HIGH POINT
⊗	RADIUS POINT
T/C	TOP OF CURB

SEE SHEET 37 FOR INTERSECTION DETAIL NOTES

- KEY NOTES**
- ① 6" RAISED CURB ISLAND POURED MONOLITHICALLY WITH SIDEWALK
 - ② 4" RAISED CURB ISLAND POURED MONOLITHICALLY WITH SIDEWALK

TBM #5
 NORTHEAST TOP FLANGE BOLT HEAD OF FIRE HYDRANT AT STA. 32+51.8 LT. ELEV. = 719.07

FILE NAME =	DESIGNED - JAJ	REVISED -
p:\u0070052\plans\sheet37-Intersection.dgn	DRAWN - JRM	REVISED -
PLOT DATE =	CHECKED - RLH	REVISED -
1/12/2009 7:48:50 PM	DATE - 01-2009	REVISED -

DESIGNED - JAJ	REVISED -
DRAWN - JRM	REVISED -
CHECKED - RLH	REVISED -
DATE - 01-2009	REVISED -

STATE OF ILLINOIS
DEPARTMENT OF TRANSPORTATION

INTERSECTION DETAILS

SCALE: 1"=10' SHEET NO. 42 OF 75 SHEETS STA. TO STA.

F.A.U. RTE.	SECTION	COUNTY	TOTAL SHEETS	SHEET NO.
7175	07-00456-00-RS	CHAMPAIGN	75	42
GOODWIN AVENUE		CONTRACT NO. 91392		
FED. ROAD DIST. NO.		ILLINOIS FED. AID PROJECT		