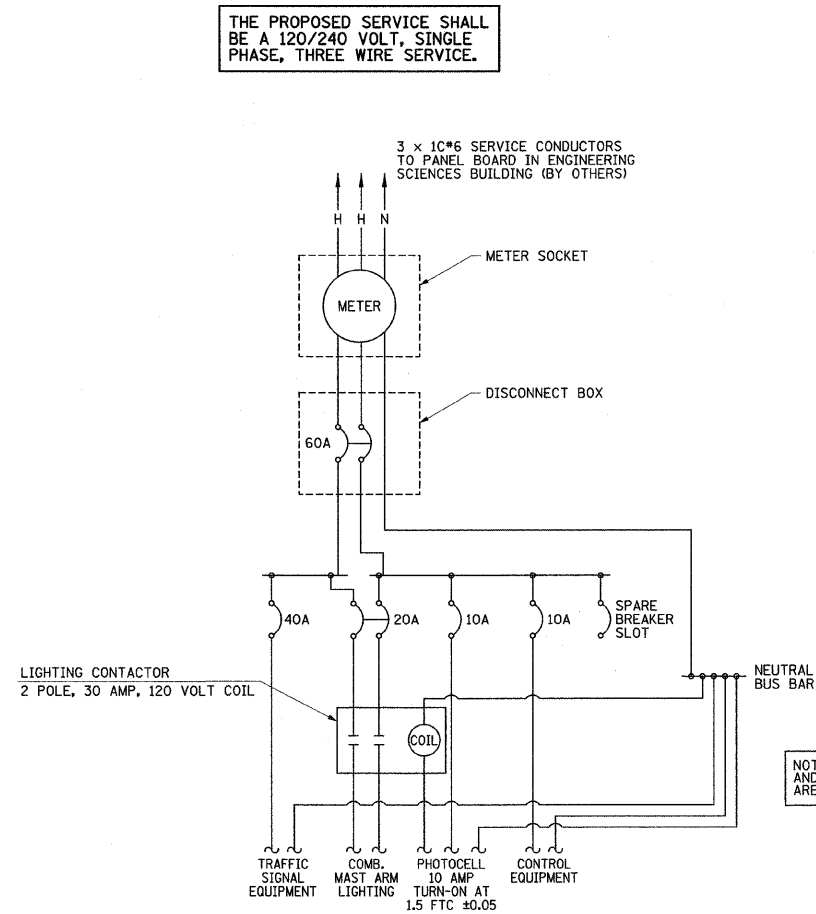


**TRAFFIC SIGNAL GROUNDING DIAGRAM**

ALL WIRES SHALL BE NO. 6 AWG STRANDED COPPER CONDUCTORS WITH XLP INSULATION UNLESS OTHERWISE INDICATED. THE INSULATION COLOR SHALL BE GREEN.



**TRAFFIC SIGNAL CONTROLLER INSTALLATION DIAGRAM**

FILE NAME =	DESIGNED - JAJ	REVISED -
p:\u0070052\plans\sheets\57-Signals-Spring.dgn	DRAWN - JAJ	REVISED -
PLOT DATE =	CHECKED - SMW	REVISED -
1/12/2009 7:47:13 PM	DATE - 01-2009	REVISED -

DESIGNED - JAJ	REVISED -
DRAWN - JAJ	REVISED -
CHECKED - SMW	REVISED -
DATE - 01-2009	REVISED -

STATE OF ILLINOIS  
DEPARTMENT OF TRANSPORTATION

GOODWIN AVENUE & SPRINGFIELD AVENUE  
TRAFFIC SIGNAL PLANS  
TRAFFIC SIGNAL DETAILS

SCALE : NONE SHEET NO. 63 OF 75 SHEETS STA. TO STA.

F.A.U. RTE.	SECTION	COUNTY	TOTAL SHEETS	SHEET NO.
7175	07-00456-00-RS	CHAMPAIGN	75	63
GOODWIN AVENUE		CONTRACT NO. 91392		
FED. ROAD DIST. NO.	ILLINOIS	FED. AID PROJECT		