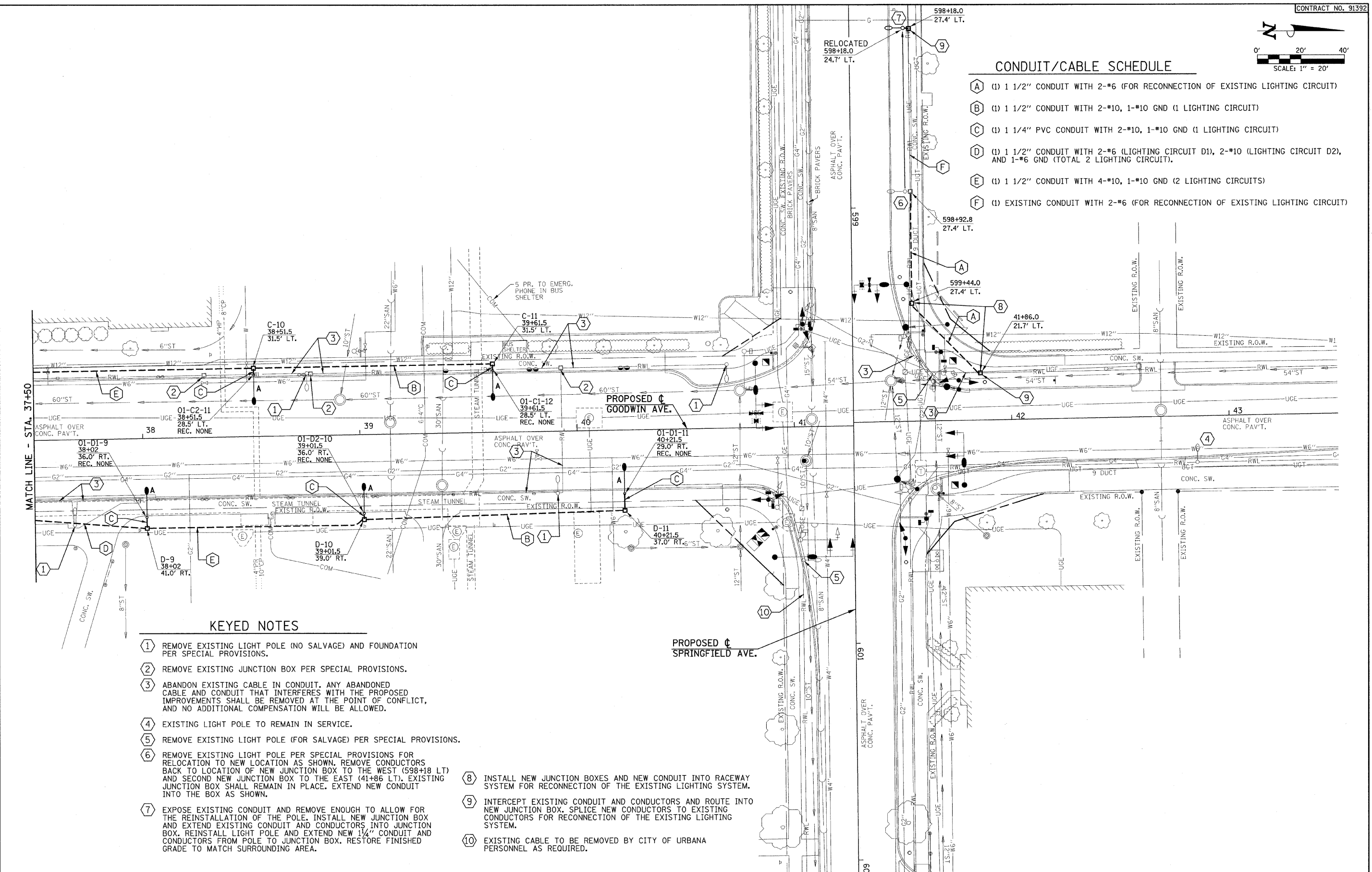


CONDUIT/CABLE SCHEDULE

- (A) (1) 1 1/2" CONDUIT WITH 2-#6 (FOR RECONNECTION OF EXISTING LIGHTING CIRCUIT)
- (B) (1) 1 1/2" CONDUIT WITH 2-#10, 1-#10 GND (1 LIGHTING CIRCUIT)
- (C) (1) 1 1/4" PVC CONDUIT WITH 2-#10, 1-#10 GND (1 LIGHTING CIRCUIT)
- (D) (1) 1 1/2" CONDUIT WITH 2-#6 (LIGHTING CIRCUIT D1), 2-#10 (LIGHTING CIRCUIT D2), AND 1-#6 GND (TOTAL 2 LIGHTING CIRCUIT).
- (E) (1) 1 1/2" CONDUIT WITH 4-#10, 1-#10 GND (2 LIGHTING CIRCUITS)
- (F) (1) EXISTING CONDUIT WITH 2-#6 (FOR RECONNECTION OF EXISTING LIGHTING CIRCUIT)



KEYED NOTES

- ① REMOVE EXISTING LIGHT POLE (NO SALVAGE) AND FOUNDATION PER SPECIAL PROVISIONS.
- ② REMOVE EXISTING JUNCTION BOX PER SPECIAL PROVISIONS.
- ③ ABANDON EXISTING CABLE IN CONDUIT. ANY ABANDONED CABLE AND CONDUIT THAT INTERFERES WITH THE PROPOSED IMPROVEMENTS SHALL BE REMOVED AT THE POINT OF CONFLICT, AND NO ADDITIONAL COMPENSATION WILL BE ALLOWED.
- ④ EXISTING LIGHT POLE TO REMAIN IN SERVICE.
- ⑤ REMOVE EXISTING LIGHT POLE (FOR SALVAGE) PER SPECIAL PROVISIONS.
- ⑥ REMOVE EXISTING LIGHT POLE PER SPECIAL PROVISIONS FOR RELOCATION TO NEW LOCATION AS SHOWN. REMOVE CONDUCTORS BACK TO LOCATION OF NEW JUNCTION BOX TO THE WEST (598+18 LT) AND SECOND NEW JUNCTION BOX TO THE EAST (41+86 LT). EXISTING JUNCTION BOX SHALL REMAIN IN PLACE. EXTEND NEW CONDUIT INTO THE BOX AS SHOWN.
- ⑦ EXPOSE EXISTING CONDUIT AND REMOVE ENOUGH TO ALLOW FOR THE REINSTALLATION OF THE POLE. INSTALL NEW JUNCTION BOX AND EXTEND EXISTING CONDUIT AND CONDUCTORS INTO JUNCTION BOX. REINSTALL LIGHT POLE AND EXTEND NEW 1 1/4" CONDUIT AND CONDUCTORS FROM POLE TO JUNCTION BOX. RESTORE FINISHED GRADE TO MATCH SURROUNDING AREA.
- ⑧ INSTALL NEW JUNCTION BOXES AND NEW CONDUIT INTO RACEWAY SYSTEM FOR RECONNECTION OF THE EXISTING LIGHTING SYSTEM.
- ⑨ INTERCEPT EXISTING CONDUIT AND CONDUCTORS AND ROUTE INTO NEW JUNCTION BOX. SPLICE NEW CONDUCTORS TO EXISTING CONDUCTORS FOR RECONNECTION OF THE EXISTING LIGHTING SYSTEM.
- ⑩ EXISTING CABLE TO BE REMOVED BY CITY OF URBANA PERSONNEL AS REQUIRED.

FILE NAME = P:\U0070052\Plans\Sheets\64-Lighting.dgn
 PLOT DATE = 1/23/2009 12:59:05 PM

DESIGNED - MTP	REVISED -
DRAWN - RJS	REVISED -
CHECKED - JJF	REVISED -
DATE - 01-2009	REVISED -

STATE OF ILLINOIS
 DEPARTMENT OF TRANSPORTATION

ROADWAY LIGHTING PLAN

SCALE: 1"=20' SHEET NO. 69 OF 75 SHEETS STA. 37+50 TO STA. 43+50

F.A.U. RTE. 7175	SECTION 07-00456-00-RS	COUNTY CHAMPAIGN	TOTAL SHEETS 75	SHEET NO. 69
GOODWIN AVENUE		CONTRACT NO. 91392		
FED. ROAD DIST. NO.		ILLINOIS FED. AID PROJECT		