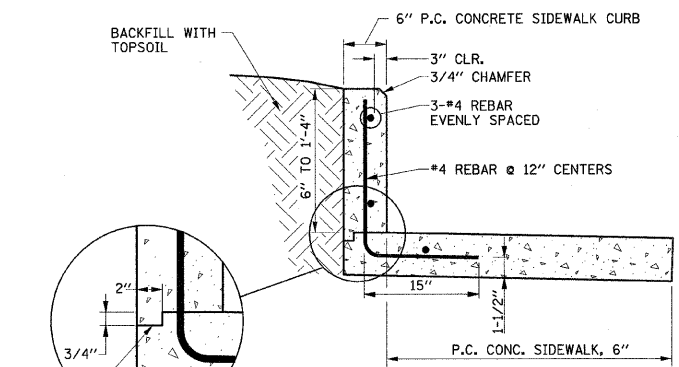


NOTE:

THE COST OF CONSTRUCTING THE ADDITIONAL CURB WIDTH BELOW GRADE AND FURNISHING AND INSTALLING THE #4 REBARS AND PREFORMED EXPANSION JOINT MATERIAL SHALL BE INCLUDED IN THE COST OF THE CONCRETE CURB, TYPE B (SPECIAL), AND NO ADDITIONAL COMPENSATION WILL BE ALLOWED. THE P.C. CONC. SIDEWALK WILL BE PAID FOR SEPARATELY.

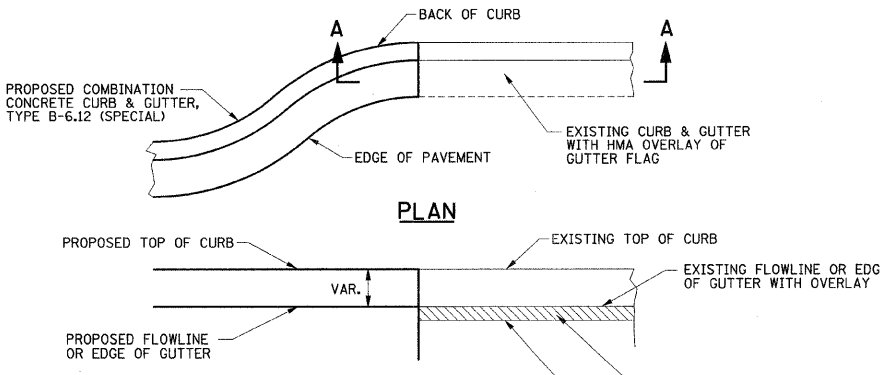
CONCRETE CURB, TYPE B (SPECIAL) DETAIL
NORTHWEST CORNER OF GOODWIN AVE. & SPRINGFIELD AVE.



NOTE:

1. SIDEWALK CURB MAY BE POURED MONOLITHIC WITH SIDEWALK IN WHICH CASE THE KEY WAY WILL NOT BE REQUIRED.
2. THE COST OF CONSTRUCTING THE ADDITIONAL SIDEWALK WIDTH BELOW THE SIDEWALK CURB AND FURNISHING AND INSTALLING #4 REBARS SHALL BE INCLUDED IN THE COST OF THE PORTLAND CEMENT CONCRETE SIDEWALK CURB, AND NO ADDITIONAL COMPENSATION WILL BE ALLOWED. THE P.C. CONC. SIDEWALK ADJACENT TO THE SIDEWALK CURB WILL BE PAID FOR SEPARATELY.

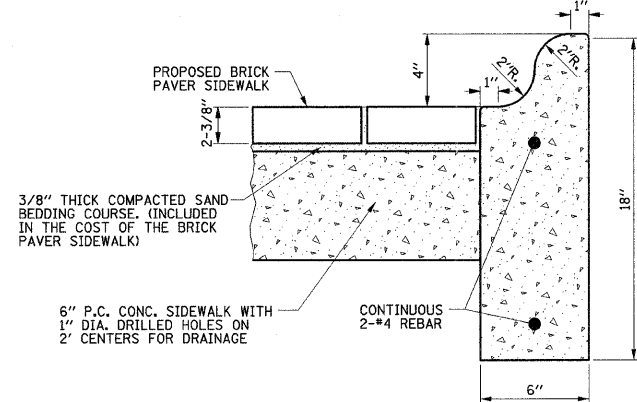
PORTLAND CEMENT CONCRETE SIDEWALK CURB DETAIL
NORTHWEST CORNER OF GOODWIN AVE. & NEVADA ST.



NOTES:

1. THE PROPOSED HMA OVERLAY WILL BE 1/4" HIGHER THAN THE PROPOSED EDGE OF GUTTER.
2. THE PROPOSED GUTTER FLAG SHALL NOT HAVE AN OVERLAY.
3. WHERE THE PROPOSED CURB AND GUTTER MEETS THE EXISTING CURB AND GUTTER, THE PROPOSED OVERLAY OF THE EXISTING GUTTER FLAG SHALL BE TRANSITIONED TO MATCH THE PROPOSED GUTTER FLAG WITHOUT OVERLAY AS DIRECTED BY THE ENGINEER.

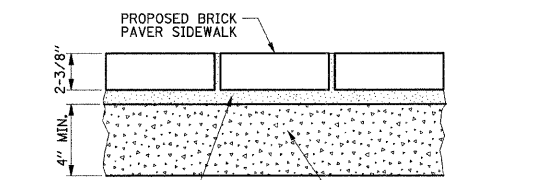
GUTTER FLAG DETAIL
EXISTING GUTTER FLAG WITH HMA OVERLAY AND PROPOSED GUTTER FLAG WITHOUT HMA OVERLAY



NOTES:

1. THE EXISTING TREE IN THE TREE PIT SHALL REMAIN.
2. THE INSIDE DIMENSIONS OF THE TREE PIT SHALL BE 6' x 3' OR AS DIRECTED BY THE ENGINEER.
3. THE COST OF FURNISHING AND INSTALLING THE #4 REBARS SHALL BE INCLUDED IN THE COST OF THE CONCRETE CURB (SPECIAL), AND NO ADDITIONAL COMPENSATION WILL BE ALLOWED. THE BRICK PAVER SIDEWALK AND P.C. CONC. SIDEWALK WILL BE PAID FOR SEPARATELY.

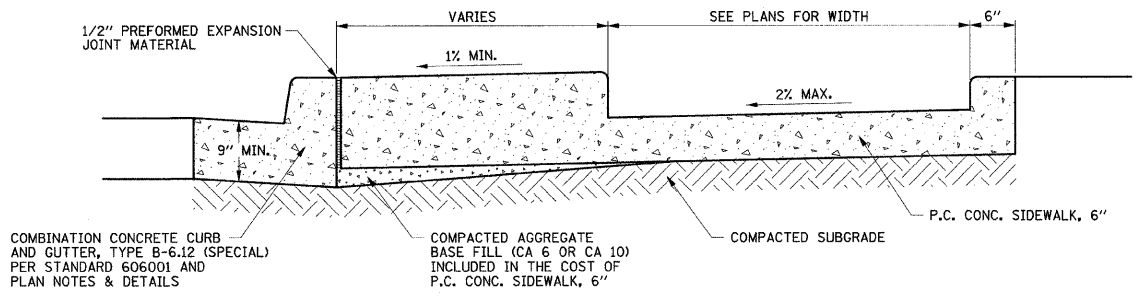
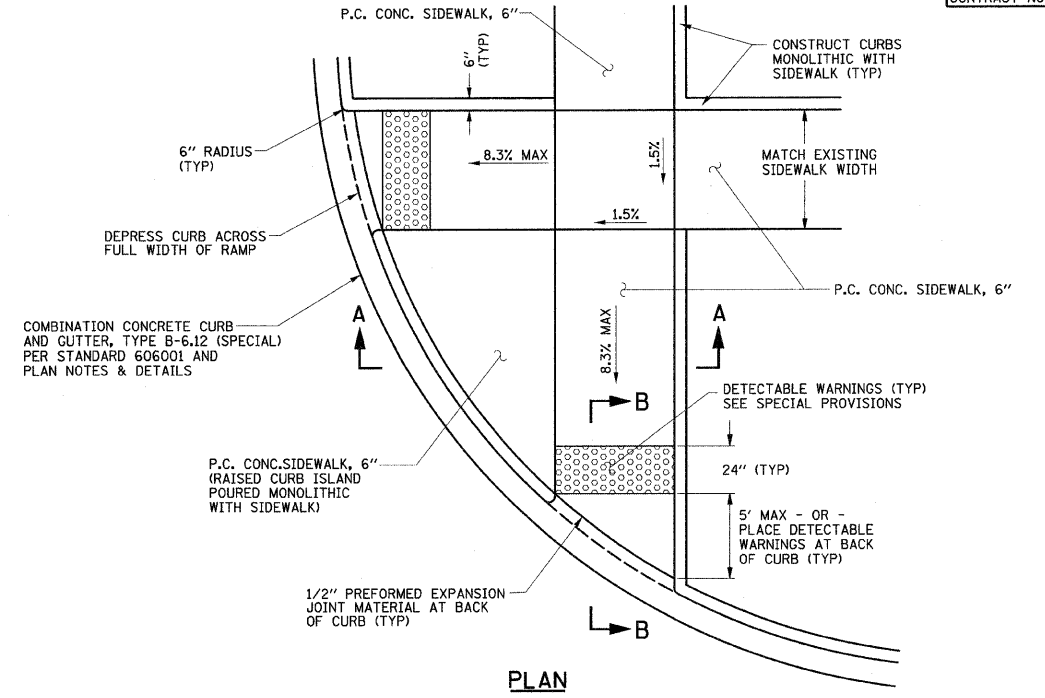
BRICK PAVER SIDEWALK AND CONCRETE CURB (SPECIAL) DETAIL
NORTHWEST CORNER OF GOODWIN AVE. & OREGON ST.



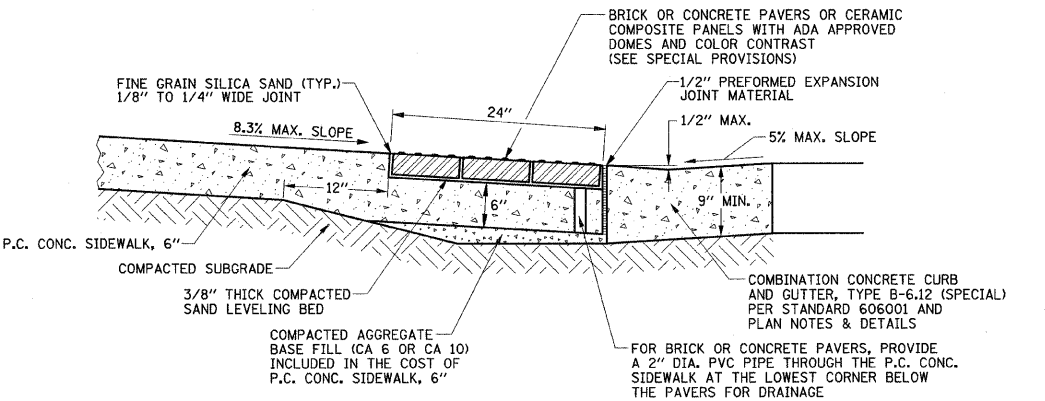
NOTE:

THE COST OF INSTALLING THE SALVAGED BRICK PAVERS ON THE SAND BEDDING COURSE SHALL BE INCLUDED IN THE COST OF REMOVE AND REINSTALL BRICK PAVERS. THE AGGREGATE BASE COURSE WILL BE PAID FOR SEPARATELY.

BRICK PAVER SIDEWALK DETAIL
WITH COMPACTED AGGREGATE BASE



SECTION A-A



SECTION B-B

SIDEWALK RAMP DETAIL

SIDEWALK GENERAL NOTES

THE COST OF CONSTRUCTING THE DEPRESSED CURB AS SHOWN SHALL BE CONSIDERED INCLUDED IN THE COST OF CONSTRUCTING THE COMBINATION CONCRETE CURB AND GUTTER TYPE B-6.12 (SPECIAL) AND NO ADDITIONAL COMPENSATION WILL BE ALLOWED.
THE COST OF FURNISHING AND INSTALLING THE 1/2" EXPANSION JOINTS AND THE COST OF CONSTRUCTING THE P.C.C. SIDEWALK THICKNESS TRANSITION, INCLUDING THE ADJACENT CURBING AS SHOWN, SHALL BE INCLUDED IN THE COST OF CONSTRUCTING P.C. CONCRETE SIDEWALK 6" AND NO ADDITIONAL COMPENSATION WILL BE ALLOWED.
THE DETECTABLE WARNINGS SHALL HAVE A CONTRASTING COLOR APPROVED BY THE ENGINEER AND SHALL BE CONSTRUCTED IN ACCORDANCE WITH STANDARD 424001 AND THE STANDARD SPECIFICATIONS. THE DETECTABLE WARNINGS WILL BE PAID FOR AT THE CONTRACT UNIT PRICE PER SQUARE FOOT FOR DETECTABLE WARNINGS.
TRANSVERSE SAWED JOINTS SHALL BE PLACED AT CENTERS EQUAL TO THE SIDEWALK WIDTH UNLESS OTHERWISE DIRECTED BY THE ENGINEER. THE MAXIMUM TRANSVERSE JOINT SPACING SHALL BE 10' UNLESS OTHERWISE DIRECTED BY THE ENGINEER. THE 3/4" EXPANSION JOINTS SHALL BE PLACED AT 100' CENTERS.

FILE NAME = p:\u0070052\plans\sheet\72-MiscDetails.dgn	DESIGNED - JAJ	REVISED -
PLOT DATE = 1/12/2009 7:47:25 PM	DRAWN - DLM	REVISED -
	CHECKED - RLH	REVISED -
	DATE - 01-2009	REVISED -

DESIGNED - JAJ	REVISED -
DRAWN - DLM	REVISED -
CHECKED - RLH	REVISED -
DATE - 01-2009	REVISED -

STATE OF ILLINOIS
DEPARTMENT OF TRANSPORTATION

MISCELLANEOUS DETAILS

SCALE : NONE SHEET NO. 74 OF 75 SHEETS STA. TO STA.

F.A.U. RTE.	SECTION	COUNTY	TOTAL SHEETS	SHEET NO.
1715	07-00456-00-RS	CHAMPAIGN	75	74
GOODWIN AVENUE		CONTRACT NO. 91392		
FED. ROAD DIST. NO. [ILLINOIS] FED. AID PROJECT				