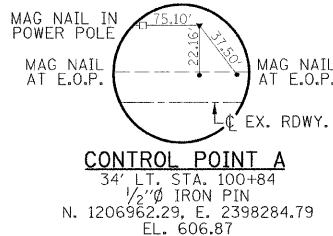


SECTION 29, R. 6 W., T. 18 N. 3rd P.M.
JEFFREY SAMPSON WILLIAM & DEBRA SINGER

F.A.S. RTE.	SECTION	COUNTY	TOTAL SHEETS	SHEET NO.
574	07-00056-00-PV	MENARD	34	7
CONTRACT NO. 9347				
FED. ROAD DIST. NO. ILLINOIS FED. AID PROJECT				



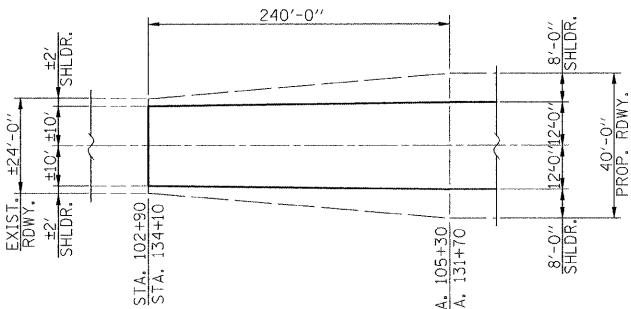
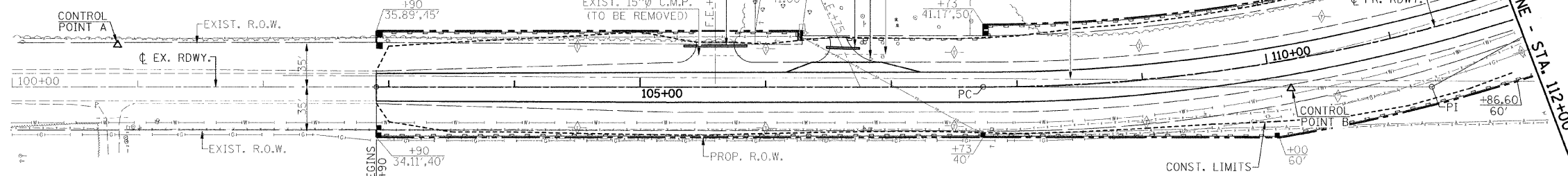
INSTALL NEW 15"Ø X 50' PIPE CULVERTS, CLASS D, TYPE I WITH METAL END SECTIONS
INLET - EL. 608.0
OUTLET - EL. 607.5

INSTALL NEW 15"Ø X 26' PIPE CULVERTS, CLASS D, TYPE I WITH METAL END SECTIONS
INLET - EL. 609.8
OUTLET - EL. 609.5

MAILBOX (TO BE RELOCATED)
EXIST. 15"Ø C.M.P. (TO BE REMOVED)
INLET - EL. 41.17, 50'

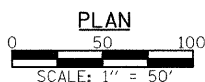
CHARLES D. JONES

S. LINE, N.E. 1/4, N.E. 1/4, S.W. 1/4, SEC. 29

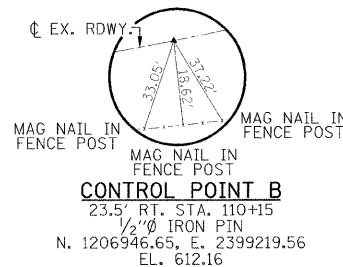


LEGEND

- ▬▬▬▬▬▬ - INDICATES TEMPORARY CONST. EASEMENT
- ◊ - INDICATES TEMPORARY DITCH CHECK
- ▬ - INDICATES PERIMETER EROSION BARRIER
- - INDICATES R.O.W. MARKER



JAMES L. SAMPSON



PROP. CURVE C5

- PI STA. = 111+30.00
- Δ = 29° 10' 06" (LT)
- D = 4° 10' 33"
- R = 1,372.10'
- T = 357.00'
- L = 698.51'
- E = 45.68'
- e = 0.06''
- T.R. = 40'
- S.E. RUN = 160'
- P.C. STA. = 107+73.00
- P.T. STA. = 114+71.51

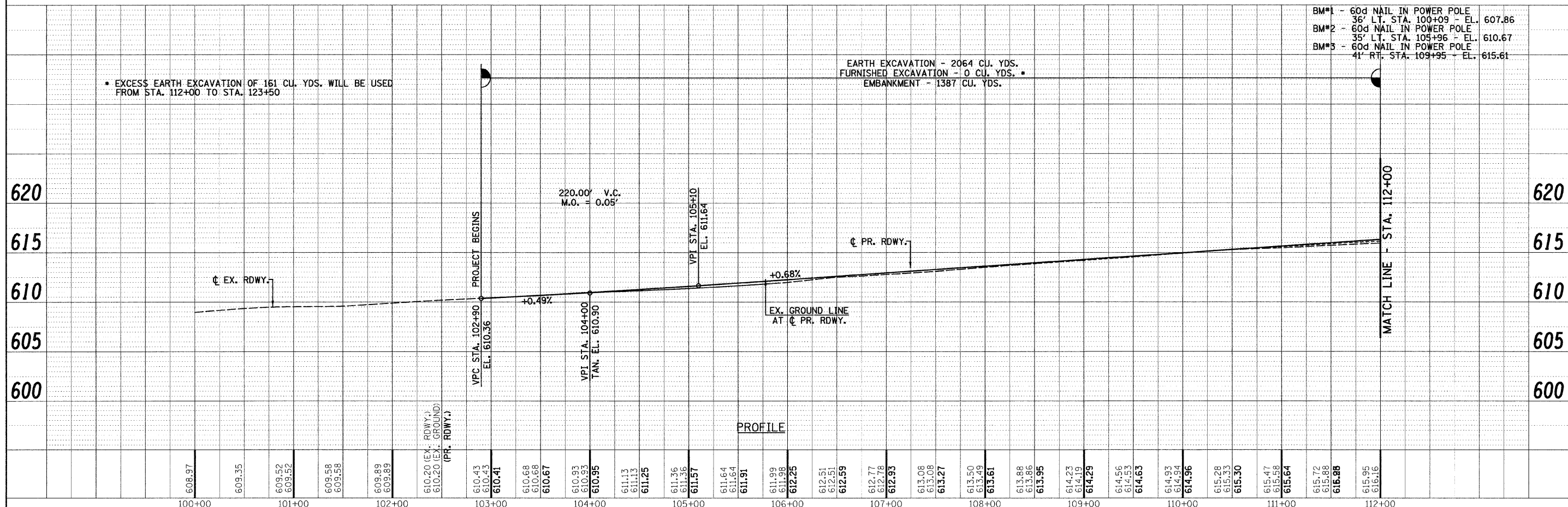
S.E. ATTAINMENT: STA. 106+23 TO STA. 108+23 RT.
STA. 107+03 TO STA. 108+23 LT.
STA. 114+21.51 TO STA. 116+21.51 RT.
STA. 114+21.51 TO STA. 115+41.51 LT.

ROADWAY TRANSITION DETAIL

• EXCESS EARTH EXCAVATION OF 161 CU. YDS. WILL BE USED FROM STA. 112+00 TO STA. 123+50

EARTH EXCAVATION - 2064 CU. YDS.
FURNISHED EXCAVATION - 0 CU. YDS.
EMBANKMENT - 1387 CU. YDS.

- BM#1 - 60d NAIL IN POWER POLE 36' LT. STA. 100+09 - EL. 607.86
- BM#2 - 60d NAIL IN POWER POLE 35' LT. STA. 105+96 - EL. 610.67
- BM#3 - 60d NAIL IN POWER POLE 41' RT. STA. 109+95 - EL. 615.61



DATE	BY

DATE	BY

FILE NAME =	USER NAME = #USER#	DESIGNED -	REVISED -	<p>Allen Henderson & Associates, Inc. Civil and Structural Engineers Springfield, IL 62703 Phone: (217)544-8033 IL Design Firm No. 184-001907</p>	PLAN & PROFILE		F.A.S. RTE.	SECTION	COUNTY	TOTAL SHEETS	SHEET NO.			
PLOT SCALE = #SCALE#	CHECKED -	REVISED -	REVISED -		SCALE: 1" = 50'	SHEET NO.	OF	SHEETS	STA. 102+90.00 TO STA. 134+10.00	574	07-00056-00-PV	MENARD	34	7
PLOT DATE = #DATE#	DRAWN -	REVISED -	REVISED -		CONTRACT NO.		9347							
	CHECKED -	REVISED -	REVISED -		FED. ROAD DIST. NO. ILLINOIS FED. AID PROJECT									